

**BAD Antibody (C-Terminus)**  
**Rabbit Polyclonal Antibody**  
**Catalog # ALS11393****Specification**

---

**BAD Antibody (C-Terminus) - Product Information**

Application	IF, WB, IHC
Primary Accession	<a href="#">O92934</a>
Reactivity	Human, Mouse, Rat
Host	Rabbit
Clonality	Polyclonal
Calculated MW	18kDa KDa

**BAD Antibody (C-Terminus) - Additional Information****Gene ID** 572**Other Names**

Bcl2-associated agonist of cell death, BAD, Bcl-2-binding component 6, Bcl-2-like protein 8, Bcl2-L-8, Bcl-xL/Bcl-2-associated death promoter, Bcl2 antagonist of cell death, BAD, BBC6, BCL2L8

**Target/Specificity**

peptide corresponding to 15 amino acids near the C-terminus of human Bad

**Reconstitution & Storage**

Short term 4°C, long term aliquot and store at -20°C, avoid freeze thaw cycles. Store undiluted.

**Precautions**

BAD Antibody (C-Terminus) is for research use only and not for use in diagnostic or therapeutic procedures.

**BAD Antibody (C-Terminus) - Protein Information****Name** BAD**Synonyms** BBC6, BCL2L8**Function**

Promotes cell death. Successfully competes for the binding to Bcl-X(L), Bcl-2 and Bcl-W, thereby affecting the level of heterodimerization of these proteins with BAX. Can reverse the death repressor activity of Bcl-X(L), but not that of Bcl-2 (By similarity). Appears to act as a link between growth factor receptor signaling and the apoptotic pathways.

**Cellular Location**

Mitochondrion outer membrane. Cytoplasm {ECO:0000250|UniProtKB:Q61337}. Note=Colocalizes with HIF3A in the cytoplasm (By similarity). Upon phosphorylation, locates to the cytoplasm. {ECO:0000250|UniProtKB:Q61337}

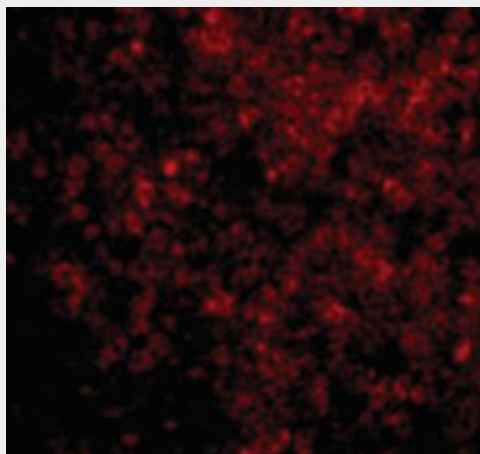
**Tissue Location**

Expressed in a wide variety of tissues.

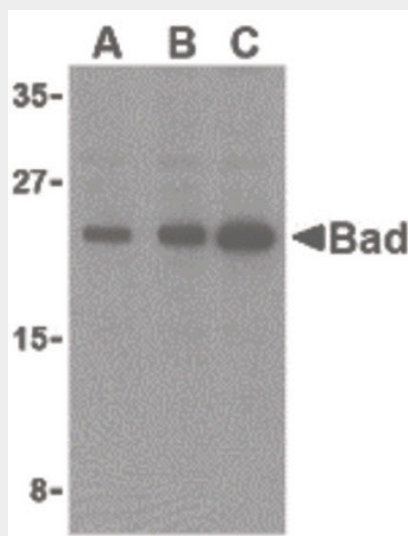
**BAD Antibody (C-Terminus) - Protocols**

Provided below are standard protocols that you may find useful for product applications.

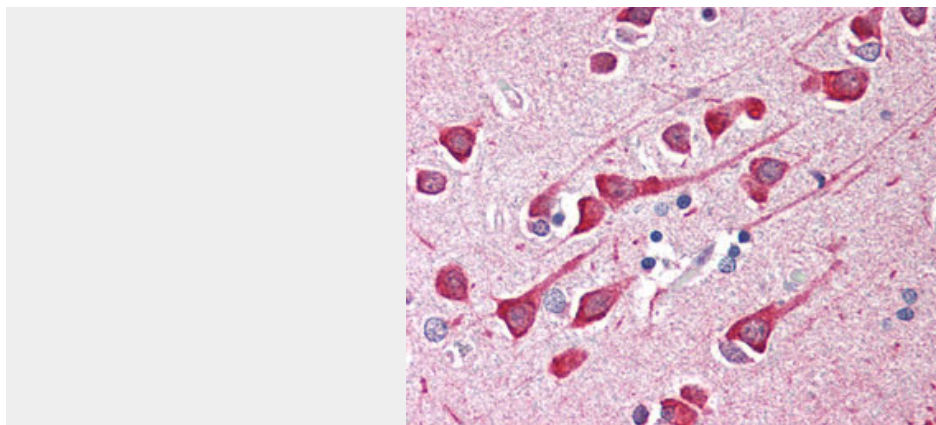
- [Western Blot](#)
- [Blocking Peptides](#)
- [Dot Blot](#)
- [Immunohistochemistry](#)
- [Immunofluorescence](#)
- [Immunoprecipitation](#)
- [Flow Cytometry](#)
- [Cell Culture](#)

**BAD Antibody (C-Terminus) - Images**

Immunofluorescence of BAD in Rat Thymus cells with BAD antibody at 10 ug/ml.



Western blot of Bad in T24 cell lysates with Bad antibody at (A) 0.5, (B) 1, and (C) 2 ug/ml.



Anti-BAD antibody IHC of human brain, cortex.

### **BAD Antibody (C-Terminus) - Background**

Promotes cell death. Successfully competes for the binding to Bcl-X(L), Bcl-2 and Bcl-W, thereby affecting the level of heterodimerization of these proteins with BAX. Can reverse the death repressor activity of Bcl-X(L), but not that of Bcl-2 (By similarity). Appears to act as a link between growth factor receptor signaling and the apoptotic pathways.

### **BAD Antibody (C-Terminus) - References**

Yin D.X.,et al.Submitted (NOV-1996) to the EMBL/GenBank/DDBJ databases.  
Wang H.-G.,et al.Cell 87:629-638(1996).  
Takayama S.,et al.Submitted (OCT-1997) to the EMBL/GenBank/DDBJ databases.  
Ottillie S.,et al.J. Biol. Chem. 272:30866-30872(1997).  
Ota T.,et al.Nat. Genet. 36:40-45(2004).