

NGFRAP1 / NADE / Bex Antibody
Rabbit Polyclonal Antibody
Catalog # ALS11423**Specification**

NGFRAP1 / NADE / Bex Antibody - Product Information

Application	WB, IHC
Primary Accession	Q00994
Reactivity	Human, Mouse
Host	Rabbit
Clonality	Polyclonal
Calculated MW	13kDa KDa

NGFRAP1 / NADE / Bex Antibody - Additional Information**Gene ID** 27018**Other Names**

Protein BEX3, Brain-expressed X-linked protein 3, Nerve growth factor receptor-associated protein 1, Ovarian granulosa cell 13.0 kDa protein HGR74, p75NTR-associated cell death executor, NGFRAP1, BEX3, DXS6984E, NADE

Target/Specificity

peptide corresponding to 14 amino acids near the middle of human NADE

Reconstitution & Storage

Short term 4°C, long term aliquot and store at -20°C, avoid freeze thaw cycles. Store undiluted.

Precautions

NGFRAP1 / NADE / Bex Antibody is for research use only and not for use in diagnostic or therapeutic procedures.

NGFRAP1 / NADE / Bex Antibody - Protein Information**Name** BEX3 ([HGNC:13388](#))**Synonyms** DXS6984E, NADE, NGFRAP1**Function**

May be a signaling adapter molecule involved in NGFR/p75NTR- mediated apoptosis induced by NGF. Plays a role in zinc-triggered neuronal death. In absence of reductive stress, acts as a pseudosubstrate for the CRL2(FEM1B) complex: associates with FEM1B via zinc, thereby preventing association between FEM1B and its substrates.

Cellular Location

Nucleus {ECO:0000250|UniProtKB:Q9WTZ9}. Cytoplasm, cytosol {ECO:0000250|UniProtKB:Q9WTZ9}. Note=Shuttles between the cytoplasm and the nucleus. Associates with replicating mitochondria. {ECO:0000250|UniProtKB:Q9WTZ9}

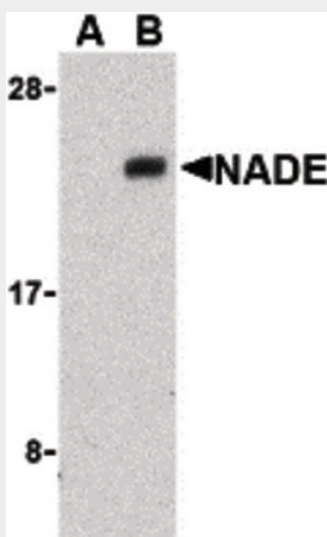
Tissue Location

Found in ovarian granulosa cells, testis, prostate and seminal vesicle tissue. High levels also detected in liver

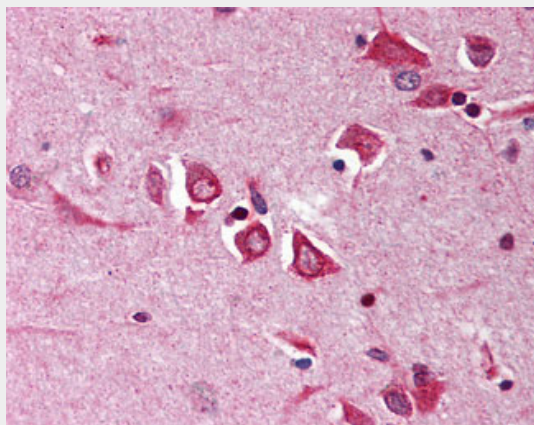
NGFRAP1 / NADE / Bex Antibody - Protocols

Provided below are standard protocols that you may find useful for product applications.

- [Western Blot](#)
- [Blocking Peptides](#)
- [Dot Blot](#)
- [Immunohistochemistry](#)
- [Immunofluorescence](#)
- [Immunoprecipitation](#)
- [Flow Cytometry](#)
- [Cell Culture](#)

NGFRAP1 / NADE / Bex Antibody - Images

Western blot of NADE in Human brain cell lysates with NADE antibody at 1 ug/ml in the presence...



Anti-NGFRAP1 / NADE antibody IHC of human brain, cortex.

NGFRAP1 / NADE / Bex Antibody - Background

May be a signaling adapter molecule involved in p75NTR- mediated apoptosis induced by NGF. Plays a role in zinc-triggered neuronal death (By similarity). May play an important role in the pathogenesis of neurogenetic diseases.

NGFRAP1 / NADE / Bex Antibody - References

Rapp G.,et al.DNA Cell Biol. 9:479-485(1990).
Mukai J.,et al.J. Biol. Chem. 275:17566-17570(2000).
Alvarez E.,et al.Gene 357:18-28(2005).
Ota T.,et al.Nat. Genet. 36:40-45(2004).
Zhou X.,et al.Mol. Vis. 13:2214-2221(2007).