

**FOXO4 / AFX1 Antibody (aa59-73)**  
**Rabbit Polyclonal Antibody**  
**Catalog # ALS11590****Specification**

---

**FOXO4 / AFX1 Antibody (aa59-73) - Product Information**

Application	IHC
Primary Accession	<a href="#">P98177</a>
Reactivity	Human
Host	Rabbit
Clonality	Polyclonal
Calculated MW	54kDa KDa

**FOXO4 / AFX1 Antibody (aa59-73) - Additional Information****Gene ID** 4303**Other Names**

Forkhead box protein O4, Fork head domain transcription factor AFX1, FOXO4, AFX, AFX1, MLLT7

**Target/Specificity**

Amino acids 59 to 73 of human FOXO4

**Reconstitution & Storage**

Long term: -20°C; Short term: +4°C. Avoid repeat freeze-thaw cycles.

**Precautions**

FOXO4 / AFX1 Antibody (aa59-73) is for research use only and not for use in diagnostic or therapeutic procedures.

**FOXO4 / AFX1 Antibody (aa59-73) - Protein Information****Name** FOXO4**Synonyms** AFX, AFX1, MLLT7**Function**

Transcription factor involved in the regulation of the insulin signaling pathway. Binds to insulin-response elements (IREs) and can activate transcription of IGFBP1. Down-regulates expression of HIF1A and suppresses hypoxia-induced transcriptional activation of HIF1A-modulated genes. Also involved in negative regulation of the cell cycle. Involved in increased proteasome activity in embryonic stem cells (ESCs) by activating expression of PSMD11 in ESCs, leading to enhanced assembly of the 26S proteasome, followed by higher proteasome activity.

**Cellular Location**

Cytoplasm. Nucleus. Note=When phosphorylated, translocated from nucleus to cytoplasm. Dephosphorylation triggers nuclear translocation. Monoubiquitination increases nuclear localization. When deubiquitinated, translocated from nucleus to cytoplasm

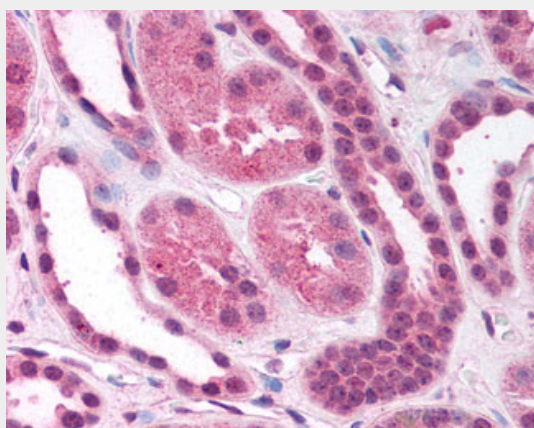
**Tissue Location**

Heart, brain, placenta, lung, liver, skeletal muscle, kidney and pancreas. Isoform zeta is most abundant in the liver, kidney, and pancreas

**FOXO4 / AFX1 Antibody (aa59-73) - Protocols**

Provided below are standard protocols that you may find useful for product applications.

- [Western Blot](#)
- [Blocking Peptides](#)
- [Dot Blot](#)
- [Immunohistochemistry](#)
- [Immunofluorescence](#)
- [Immunoprecipitation](#)
- [Flow Cytometry](#)
- [Cell Culture](#)

**FOXO4 / AFX1 Antibody (aa59-73) - Images**

Anti-FOXO4 antibody IHC of human kidney.

**FOXO4 / AFX1 Antibody (aa59-73) - Background**

Transcription factor involved in the regulation of the insulin signaling pathway. Binds to insulin-response elements (IREs) and can activate transcription of IGFBP1. Down-regulates expression of HIF1A and suppresses hypoxia-induced transcriptional activation of HIF1A-modulated genes. Also involved in negative regulation of the cell cycle. Involved in increased proteasome activity in embryonic stem cells (ESCs) by activating expression of PSMD11 in ESCs, leading to enhanced assembly of the 26S proteasome, followed by higher proteasome activity.

**FOXO4 / AFX1 Antibody (aa59-73) - References**

Peters U., et al. Hum. Genet. 100:569-572(1997).  
Borkhardt A., et al. Oncogene 14:195-202(1997).  
Yang Z., et al. J. Biol. Chem. 277:8068-8075(2002).  
Ross M.T., et al. Nature 434:325-337(2005).  
Mural R.J., et al. Submitted (SEP-2005) to the EMBL/GenBank/DDBJ databases.