

**BUB3 Antibody (C-Terminus)**  
**Rabbit Polyclonal Antibody**  
**Catalog # ALS11669****Specification**

---

**BUB3 Antibody (C-Terminus) - Product Information**

|                   |                        |
|-------------------|------------------------|
| Application       | IHC                    |
| Primary Accession | <a href="#">O43684</a> |
| Reactivity        | Human, Mouse           |
| Host              | Rabbit                 |
| Clonality         | Polyclonal             |
| Calculated MW     | 37kDa KDa              |

**BUB3 Antibody (C-Terminus) - Additional Information****Gene ID** 9184**Other Names**

Mitotic checkpoint protein BUB3, BUB3

**Target/Specificity**

a 16 amino acid peptide from near the carboxy terminus of human bub3

**Reconstitution & Storage**

Short term 4°C, long term aliquot and store at -20°C, avoid freeze thaw cycles. Store undiluted.

**Precautions**

BUB3 Antibody (C-Terminus) is for research use only and not for use in diagnostic or therapeutic procedures.

**BUB3 Antibody (C-Terminus) - Protein Information****Name** BUB3**Function**

Has a dual function in spindle-assembly checkpoint signaling and in promoting the establishment of correct kinetochore-microtubule (K-MT) attachments. Promotes the formation of stable end-on bipolar attachments. Necessary for kinetochore localization of BUB1. Regulates chromosome segregation during oocyte meiosis. The BUB1/BUB3 complex plays a role in the inhibition of anaphase-promoting complex or cyclosome (APC/C) when spindle-assembly checkpoint is activated and inhibits the ubiquitin ligase activity of APC/C by phosphorylating its activator CDC20. This complex can also phosphorylate MAD1L1.

**Cellular Location**

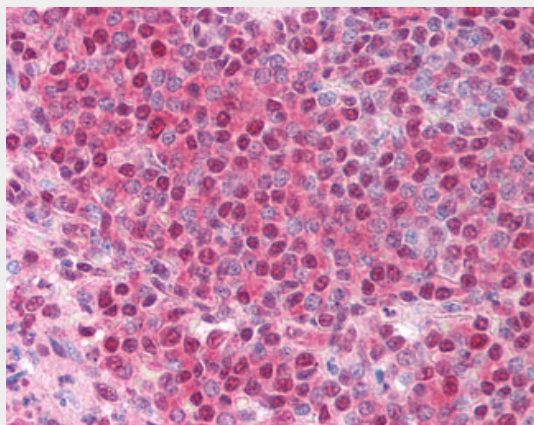
Nucleus. Chromosome, centromere, kinetochore. Note=Starts to localize at kinetochores in prometaphase I (Pro-MI) stage and maintains the localization until the metaphase I- anaphase I (MI-AI) transition.

## **BUB3 Antibody (C-Terminus) - Protocols**

Provided below are standard protocols that you may find useful for product applications.

- [Western Blot](#)
- [Blocking Peptides](#)
- [Dot Blot](#)
- [Immunohistochemistry](#)
- [Immunofluorescence](#)
- [Immunoprecipitation](#)
- [Flow Cytometry](#)
- [Cell Culture](#)

## **BUB3 Antibody (C-Terminus) - Images**



Anti-BUB3 antibody IHC of human spleen.

## **BUB3 Antibody (C-Terminus) - Background**

Has a dual function in spindle-assembly checkpoint signaling and in promoting the establishment of correct kinetochore-microtubule (K-MT) attachments. Promotes the formation of stable end-on bipolar attachments. Necessary for kinetochore localization of BUB1. Regulates chromosome segregation during oocyte meiosis. The BUB1/BUB3 complex plays a role in the inhibition of anaphase-promoting complex or cyclosome (APC/C) when spindle-assembly checkpoint is activated and inhibits the ubiquitin ligase activity of APC/C by phosphorylating its activator CDC20. This complex can also phosphorylate MAD1L1.

## **BUB3 Antibody (C-Terminus) - References**

Seeley T.W., et al. Biochem. Biophys. Res. Commun. 257:589-595(1999).  
Taylor S.S., et al. J. Cell Biol. 142:1-11(1998).  
Chan G.K.T., et al. Submitted (AUG-1998) to the EMBL/GenBank/DDBJ databases.  
Ota T., et al. Nat. Genet. 36:40-45(2004).  
Deloukas P., et al. Nature 429:375-381(2004).