

**IER3 / IEX-1 Antibody (Internal)**  
**Rabbit Polyclonal Antibody**  
**Catalog # ALS11688****Specification**

---

**IER3 / IEX-1 Antibody (Internal) - Product Information**

Application	IHC
Primary Accession	<a href="#">P46695</a>
Reactivity	Human, Mouse
Host	Rabbit
Clonality	Polyclonal
Calculated MW	17kDa KDa

**IER3 / IEX-1 Antibody (Internal) - Additional Information****Gene ID** 8870**Other Names**

Radiation-inducible immediate-early gene IEX-1, Differentiation-dependent gene 2 protein, Protein DIF-2, Immediate early protein GLY96, Immediate early response 3 protein, PACAP-responsive gene 1 protein, Protein PRG1, IER3, DIF2, IEX1, PRG1

**Target/Specificity**

a 24 amino acid peptide near the center of human IEX1

**Reconstitution & Storage**

Short term 4°C, long term aliquot and store at -20°C, avoid freeze thaw cycles. Store undiluted.

**Precautions**

IER3 / IEX-1 Antibody (Internal) is for research use only and not for use in diagnostic or therapeutic procedures.

**IER3 / IEX-1 Antibody (Internal) - Protein Information****Name** IER3**Synonyms** DIF2, IEX1, PRG1**Function**

May play a role in the ERK signaling pathway by inhibiting the dephosphorylation of ERK by phosphatase PP2A-PPP2R5C holoenzyme. Acts also as an ERK downstream effector mediating survival. As a member of the NUPR1/RELB/IER3 survival pathway, may provide pancreatic ductal adenocarcinoma with remarkable resistance to cell stress, such as starvation or gemcitabine treatment.

**Cellular Location**

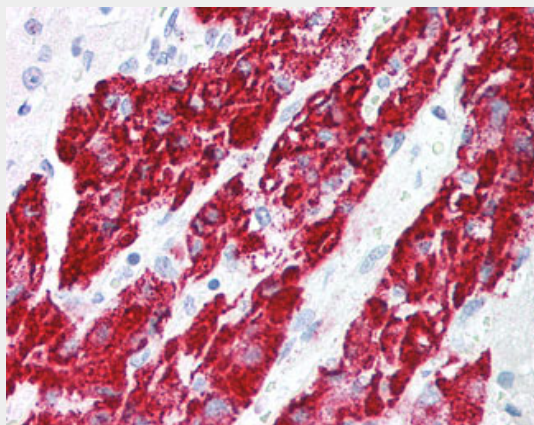
Membrane; Single- pass type II membrane protein

### **IER3 / IEX-1 Antibody (Internal) - Protocols**

Provided below are standard protocols that you may find useful for product applications.

- [Western Blot](#)
- [Blocking Peptides](#)
- [Dot Blot](#)
- [Immunohistochemistry](#)
- [Immunofluorescence](#)
- [Immunoprecipitation](#)
- [Flow Cytometry](#)
- [Cell Culture](#)

### **IER3 / IEX-1 Antibody (Internal) - Images**



Anti-IEX1 antibody IHC of human adrenal.

### **IER3 / IEX-1 Antibody (Internal) - Background**

May play a role in the ERK signaling pathway by inhibiting the dephosphorylation of ERK by phosphatase PP2A-PPP2R5C holoenzyme. Acts also as an ERK downstream effector mediating survival. As a member of the NUPR1/RELB/IER3 survival pathway, may provide pancreatic ductal adenocarcinoma with remarkable resistance to cell stress, such as starvation or gemcitabine treatment.

### **IER3 / IEX-1 Antibody (Internal) - References**

Kondratyev A.D., et al. Cancer Res. 56:1498-1502(1996).  
Schaefer H., et al. Cancer Res. 56:2641-2648(1996).  
Pietzsch A., et al. Biochem. Biophys. Res. Commun. 235:4-9(1997).  
Kalline N., et al. Submitted (MAY-2003) to the EMBL/GenBank/DDBJ databases.  
Shiina S., et al. Submitted (SEP-1999) to the EMBL/GenBank/DDBJ databases.