

PDCD4 Antibody (C-Terminus)
Rabbit Polyclonal Antibody
Catalog # ALS11706**Specification**

PDCD4 Antibody (C-Terminus) - Product Information

Application	IHC
Primary Accession	Q53EL6
Reactivity	Human, Mouse, Rat
Host	Rabbit
Clonality	Polyclonal
Calculated MW	52kDa KDa

PDCD4 Antibody (C-Terminus) - Additional Information**Gene ID** 27250**Other Names**

Programmed cell death protein 4, Neoplastic transformation inhibitor protein, Nuclear antigen H731-like, Protein 197/15a, PDCD4, H731

Target/Specificity

19 amino acid peptide from near the carboxy terminus of human PDCD4.

Reconstitution & Storage

Short term 4°C, long term aliquot and store at -20°C, avoid freeze thaw cycles. Store undiluted.

Precautions

PDCD4 Antibody (C-Terminus) is for research use only and not for use in diagnostic or therapeutic procedures.

PDCD4 Antibody (C-Terminus) - Protein Information**Name** PDCD4**Synonyms** H731**Function**

Inhibits translation initiation and cap-dependent translation. May exert its function by hindering the interaction between EIF4A1 and EIF4G. Inhibits the helicase activity of EIF4A. Modulates the activation of JUN kinase. Down-regulates the expression of MAP4K1, thus inhibiting events important in driving invasion, namely, MAPK85 activation and consequent JUN-dependent transcription. May play a role in apoptosis. Tumor suppressor. Inhibits tumor promoter-induced neoplastic transformation. Binds RNA (By similarity).

Cellular Location

Nucleus {ECO:0000250|UniProtKB:Q61823}. Cytoplasm {ECO:0000250|UniProtKB:Q61823}.

Note=Shuttles between the nucleus and cytoplasm (By similarity). Predominantly nuclear under

normal growth conditions, and when phosphorylated at Ser-457 (PubMed:16357133)

Tissue Location

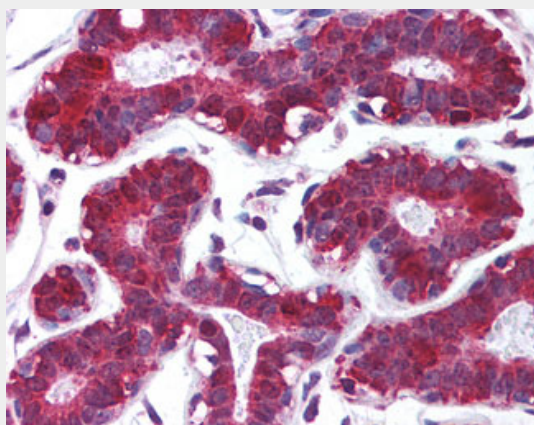
Up-regulated in proliferative cells. Highly expressed in epithelial cells of the mammary gland. Reduced expression in lung cancer and colon carcinoma.

PDCD4 Antibody (C-Terminus) - Protocols

Provided below are standard protocols that you may find useful for product applications.

- [Western Blot](#)
- [Blocking Peptides](#)
- [Dot Blot](#)
- [Immunohistochemistry](#)
- [Immunofluorescence](#)
- [Immunoprecipitation](#)
- [Flow Cytometry](#)
- [Cell Culture](#)

PDCD4 Antibody (C-Terminus) - Images



Anti-PDCD4 antibody IHC of human breast.

PDCD4 Antibody (C-Terminus) - Background

Inhibits translation initiation and cap-dependent translation. May exert its function by hindering the interaction between EIF4A1 and EIF4G. Inhibits the helicase activity of EIF4A. Modulates the activation of JUN kinase. Down-regulates the expression of MAP4K1, thus inhibiting events important in driving invasion, namely, MAPK85 activation and consequent JUN-dependent transcription. May play a role in apoptosis. Tumor suppressor. Inhibits tumor promoter-induced neoplastic transformation. Binds RNA (By similarity).

PDCD4 Antibody (C-Terminus) - References

Matsushashi S., et al. Res. Commun. Biochem. Cell Mol. Biol. 1:109-120(1997).
Azzoni L., et al. J. Immunol. 161:3493-3500(1998).
Ota T., et al. Nat. Genet. 36:40-45(2004).
Totoki Y., et al. Submitted (APR-2005) to the EMBL/GenBank/DDBJ databases.
Deloukas P., et al. Nature 429:375-381(2004).