

**RPAIN Antibody (C-Terminus)**  
**Rabbit Polyclonal Antibody**  
**Catalog # ALS11712****Specification**

---

**RPAIN Antibody (C-Terminus) - Product Information**

Application	IHC
Primary Accession	<a href="#">Q86UA6</a>
Reactivity	Human, Mouse, Rat
Host	Rabbit
Clonality	Polyclonal
Calculated MW	25kDa KDa

**RPAIN Antibody (C-Terminus) - Additional Information****Gene ID** 84268**Other Names**

RPA-interacting protein, hRIP, RPAIN, RIP

**Target/Specificity**

17 amino acid peptide from near the carboxy terminus of human RPA IP.

**Reconstitution & Storage**

Short term 4°C, long term aliquot and store at -20°C, avoid freeze thaw cycles. Store undiluted.

**Precautions**

RPAIN Antibody (C-Terminus) is for research use only and not for use in diagnostic or therapeutic procedures.

**RPAIN Antibody (C-Terminus) - Protein Information****Name** RPAIN**Synonyms** RIP**Function**

Mediates the import of RPA complex into the nucleus, possibly via some interaction with importin beta. Isoform 2 is sumoylated and mediates the localization of RPA complex into the PML body of the nucleus, thereby participating in RPA function in DNA metabolism.

**Cellular Location**

[Isoform 1]: Cytoplasm. Nucleus.

**Tissue Location**

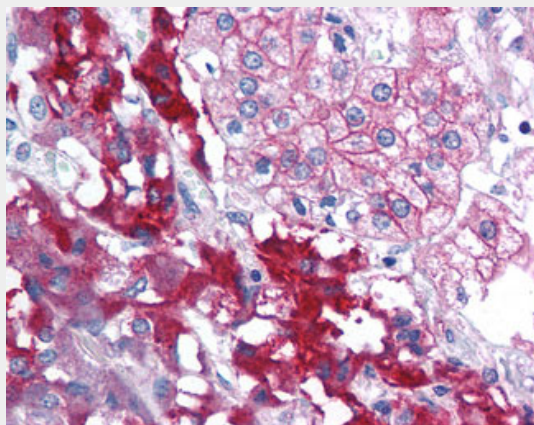
Widely expressed. Expressed in pancreas, kidney, muscle, liver, lung, placenta, brain, heart, leukocytes, colon, intestine, ovary, testis, prostate, thymus and spleen

## **RPAIN Antibody (C-Terminus) - Protocols**

Provided below are standard protocols that you may find useful for product applications.

- [Western Blot](#)
- [Blocking Peptides](#)
- [Dot Blot](#)
- [Immunohistochemistry](#)
- [Immunofluorescence](#)
- [Immunoprecipitation](#)
- [Flow Cytometry](#)
- [Cell Culture](#)

## **RPAIN Antibody (C-Terminus) - Images**



Anti-RPAIN antibody IHC of human adrenal.

## **RPAIN Antibody (C-Terminus) - Background**

Mediates the import of RPA complex into the nucleus, possibly via some interaction with importin beta. Isoform 2 is sumoylated and mediates the localization of RPA complex into the PML body of the nucleus, thereby participating in RPA function in DNA metabolism.

## **RPAIN Antibody (C-Terminus) - References**

Chen J.-Z., et al. *DNA Cell Biol.* 24:464-469(2005).  
Park J., et al. *Mol. Cell. Biol.* 25:8202-8214(2005).  
Ota T., et al. *Nat. Genet.* 36:40-45(2004).  
Zody M.C., et al. *Nature* 440:1045-1049(2006).  
Gauci S., et al. *Anal. Chem.* 81:4493-4501(2009).