

TBC1 / TBC1D1 Antibody (C-Terminus)
Rabbit Polyclonal Antibody
Catalog # ALS11719**Specification**

TBC1 / TBC1D1 Antibody (C-Terminus) - Product Information

Application	IHC
Primary Accession	Q86TI0
Reactivity	Human
Host	Rabbit
Clonality	Polyclonal
Calculated MW	133kDa KDa

TBC1 / TBC1D1 Antibody (C-Terminus) - Additional Information**Gene ID** 23216**Other Names**

TBC1 domain family member 1, TBC1D1, KIAA1108

Target/Specificity

a 22 amino acid peptide from near the carboxy terminus of human TBC1D1

Reconstitution & Storage

Short term 4°C, long term aliquot and store at -20°C, avoid freeze thaw cycles. Store undiluted.

Precautions

TBC1 / TBC1D1 Antibody (C-Terminus) is for research use only and not for use in diagnostic or therapeutic procedures.

TBC1 / TBC1D1 Antibody (C-Terminus) - Protein Information**Name** TBC1D1**Synonyms** KIAA1108**Function**

May act as a GTPase-activating protein for Rab family protein(s). May play a role in the cell cycle and differentiation of various tissues. Involved in the trafficking and translocation of GLUT4-containing vesicles and insulin-stimulated glucose uptake into cells (By similarity).

Cellular Location

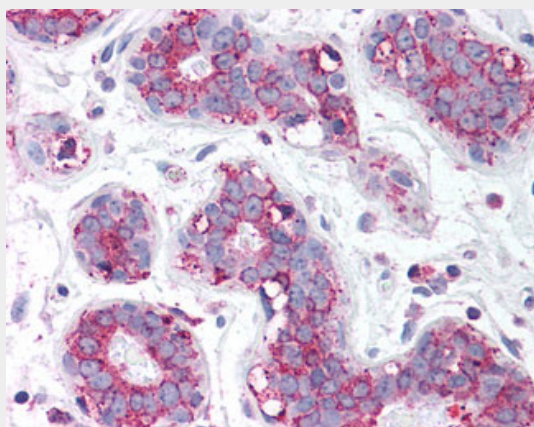
Nucleus.

TBC1 / TBC1D1 Antibody (C-Terminus) - Protocols

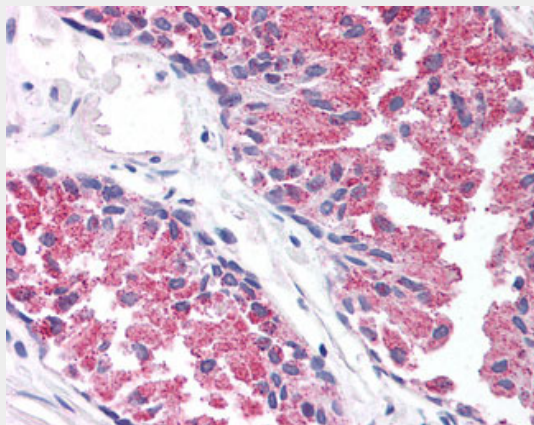
Provided below are standard protocols that you may find useful for product applications.

- [Western Blot](#)
- [Blocking Peptides](#)
- [Dot Blot](#)
- [Immunohistochemistry](#)
- [Immunofluorescence](#)
- [Immunoprecipitation](#)
- [Flow Cytometry](#)
- [Cell Culture](#)

TBC1 / TBC1D1 Antibody (C-Terminus) - Images



Anti-TBC1D1 antibody IHC of human breast.



Anti-TBC1D1 antibody IHC of human prostate.

TBC1 / TBC1D1 Antibody (C-Terminus) - Background

May act as a GTPase-activating protein for Rab family protein(s). May play a role in the cell cycle and differentiation of various tissues. Involved in the trafficking and translocation of GLUT4-containing vesicles and insulin-stimulated glucose uptake into cells (By similarity).

TBC1 / TBC1D1 Antibody (C-Terminus) - References

Ota T.,et al.Nat. Genet. 36:40-45(2004).
Hillier L.W.,et al.Nature 434:724-731(2005).
Kikuno R.,et al.DNA Res. 6:197-205(1999).
Nakajima D.,et al.DNA Res. 9:99-106(2002).

Rush J., et al. Nat. Biotechnol. 23:94-101(2005).