

SP3 Antibody (C-Terminus)
Rabbit Polyclonal Antibody
Catalog # ALS11830**Specification**

SP3 Antibody (C-Terminus) - Product Information

Application	WB, IHC
Primary Accession	Q02447
Reactivity	Human, Mouse, Rat
Host	Rabbit
Clonality	Polyclonal
Calculated MW	82kDa KDa

SP3 Antibody (C-Terminus) - Additional Information**Gene ID** 6670**Other Names**

Transcription factor Sp3, SPR-2, SP3

Target/Specificity

Peptide mapping to the carboxy terminus of human Sp3

Reconstitution & Storage

+4°C, avoid freezing

Precautions

SP3 Antibody (C-Terminus) is for research use only and not for use in diagnostic or therapeutic procedures.

SP3 Antibody (C-Terminus) - Protein Information**Name** SP3**Function**

Transcriptional factor that can act as an activator or repressor depending on isoform and/or post-translational modifications. Binds to GT and GC boxes promoter elements. Competes with SP1 for the GC-box promoters. Weak activator of transcription but can activate a number of genes involved in different processes such as cell-cycle regulation, hormone-induction and house-keeping.

Cellular Location

Nucleus. Nucleus, PML body. Note=Localizes to the nuclear periphery and in nuclear dots when sumoylated. Some localization in PML nuclear bodies

Tissue Location

Ubiquitously expressed.

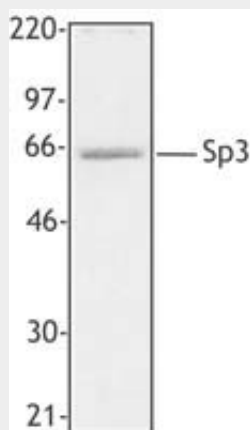
Volume
50 µl

SP3 Antibody (C-Terminus) - Protocols

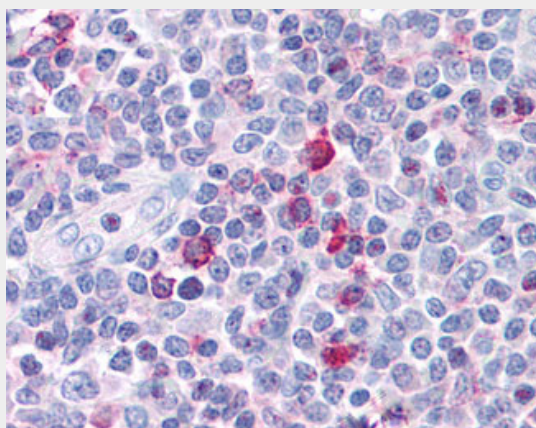
Provided below are standard protocols that you may find useful for product applications.

- [Western Blot](#)
- [Blocking Peptides](#)
- [Dot Blot](#)
- [Immunohistochemistry](#)
- [Immunofluorescence](#)
- [Immunoprecipitation](#)
- [Flow Cytometry](#)
- [Cell Culture](#)

SP3 Antibody (C-Terminus) - Images



HeLa cell extract was resolved by electrophoresis, transferred to nitrocellulose, and probed...



Anti-SP3 antibody IHC of human tonsil.

SP3 Antibody (C-Terminus) - Background

Transcriptional factor that can act as an activator or repressor depending on isoform and/or post-translational modifications. Binds to GT and GC boxes promoter elements. Competes with SP1 for the GC-box promoters. Weak activator of transcription but can activate a number of genes

involved in different processes such as cell-cycle regulation, hormone- induction and house-keeping.

SP3 Antibody (C-Terminus) - References

Hernandez E.M.,et al.J. Biochem. Mol. Biol. 35:273-282(2002).
Moran K.M.,et al.Gene 341:235-247(2004).
Ota T.,et al.Nat. Genet. 36:40-45(2004).
Oleksiak M.F.,et al.Mol. Biol. Evol. 19:2026-2029(2002).
Meyer-Grahle U.,et al.Submitted (MAR-2001) to the EMBL/GenBank/DDBJ databases.