

FEN1 Antibody (aa1-380, clone 4E7)
Mouse Monoclonal Antibody
Catalog # ALS11857**Specification**

FEN1 Antibody (aa1-380, clone 4E7) - Product Information

Application	IHC
Primary Accession	P39748
Reactivity	Human
Host	Mouse
Clonality	Monoclonal
Calculated MW	43kDa KDa

FEN1 Antibody (aa1-380, clone 4E7) - Additional Information**Gene ID** 2237**Other Names**

Flap endonuclease 1 {ECO:0000255|HAMAP-Rule:MF_03140}, FEN-1 {ECO:0000255|HAMAP-Rule:MF_03140}, 3.1.-.- {ECO:0000255|HAMAP-Rule:MF_03140}, DNase IV, Flap structure-specific endonuclease 1 {ECO:0000255|HAMAP-Rule:MF_03140}, Maturation factor 1, MF1, hFEN-1, FEN1 {ECO:0000255|HAMAP-Rule:MF_03140}, RAD2

Target/Specificity

Recombinant human FEN-1 protein encoding amino acids 1-380 purified E. coli.

Reconstitution & Storage

Short term 4°C, long term aliquot and store at -20°C, avoid freeze thaw cycles.

Precautions

FEN1 Antibody (aa1-380, clone 4E7) is for research use only and not for use in diagnostic or therapeutic procedures.

FEN1 Antibody (aa1-380, clone 4E7) - Protein Information**Name** FEN1 {ECO:0000255|HAMAP-Rule:MF_03140}**Synonyms** RAD2**Function**

Structure-specific nuclease with 5'-flap endonuclease and 5'- 3' exonuclease activities involved in DNA replication and repair. During DNA replication, cleaves the 5'-overhanging flap structure that is generated by displacement synthesis when DNA polymerase encounters the 5'-end of a downstream Okazaki fragment. It enters the flap from the 5'-end and then tracks to cleave the flap base, leaving a nick for ligation. Also involved in the long patch base excision repair (LP-BER) pathway, by cleaving within the apurinic/apyrimidinic (AP) site- terminated flap. Acts as a genome stabilization factor that prevents flaps from equilibrating into structures that lead to duplications and deletions. Also possesses 5'-3' exonuclease activity on nicked or gapped double-stranded

DNA, and exhibits RNase H activity. Also involved in replication and repair of rDNA and in repairing mitochondrial DNA.

Cellular Location

[Isoform 1]: Nucleus, nucleolus. Nucleus, nucleoplasm. Note=Resides mostly in the nucleoli and relocalizes to the nucleoplasm upon DNA damage

Volume

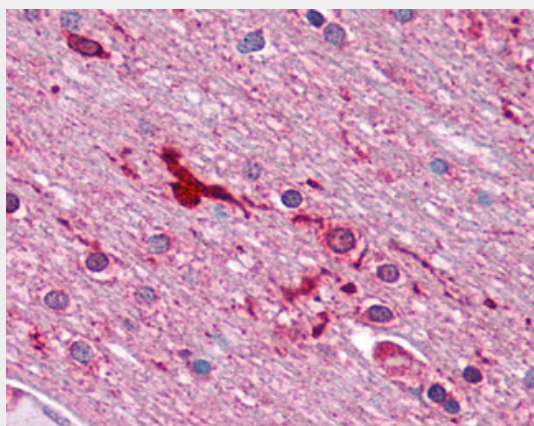
50 μ l

FEN1 Antibody (aa1-380, clone 4E7) - Protocols

Provided below are standard protocols that you may find useful for product applications.

- [Western Blot](#)
- [Blocking Peptides](#)
- [Dot Blot](#)
- [Immunohistochemistry](#)
- [Immunofluorescence](#)
- [Immunoprecipitation](#)
- [Flow Cytometry](#)
- [Cell Culture](#)

FEN1 Antibody (aa1-380, clone 4E7) - Images



Anti-FEN1 antibody IHC of human brain, cortex.

FEN1 Antibody (aa1-380, clone 4E7) - Background

Structure-specific nuclease with 5'-flap endonuclease and 5'-3' exonuclease activities involved in DNA replication and repair. During DNA replication, cleaves the 5'-overhanging flap structure that is generated by displacement synthesis when DNA polymerase encounters the 5'-end of a downstream Okazaki fragment. It enters the flap from the 5'-end and then tracks to cleave the flap base, leaving a nick for ligation. Also involved in the long patch base excision repair (LP-BER) pathway, by cleaving within the apurinic/apyrimidinic (AP) site-terminated flap. Acts as a genome stabilization factor that prevents flaps from equilibrating into structures that lead to duplications and deletions. Also possesses 5'-3' exonuclease activity on nicked or gapped double-stranded DNA, and exhibits RNase H activity. Also involved in replication and repair of rDNA and in repairing mitochondrial DNA.

FEN1 Antibody (aa1-380, clone 4E7) - References

Murray J.M.,et al.Mol. Cell. Biol. 14:4878-4888(1994).
Hiraoka L.R.,et al.Genomics 25:220-225(1995).
Taylor T.D.,et al.Nature 440:497-500(2006).
Robins P.,et al.J. Biol. Chem. 269:28535-28538(1994).
Shen B.,et al.J. Biol. Chem. 271:9173-9176(1996).