

FXR2 Antibody (aa414-658, clone 1G2)
Mouse Monoclonal Antibody
Catalog # ALS11858**Specification**

FXR2 Antibody (aa414-658, clone 1G2) - Product Information

Application	IHC
Primary Accession	P51116
Reactivity	Human, Mouse
Host	Mouse
Clonality	Monoclonal
Calculated MW	74kDa KDa

FXR2 Antibody (aa414-658, clone 1G2) - Additional Information**Gene ID** 9513**Other Names**

Fragile X mental retardation syndrome-related protein 2, FXR2, FMR1L2

Target/Specificity

Recombinant C-terminal fragment of human FXR2 (residues 414-658)

Reconstitution & Storage

Long term: -20°C; Short term: +4°C. Avoid repeat freeze-thaw cycles.

Precautions

FXR2 Antibody (aa414-658, clone 1G2) is for research use only and not for use in diagnostic or therapeutic procedures.

FXR2 Antibody (aa414-658, clone 1G2) - Protein Information**Name** FXR2 {ECO:0000303|PubMed:7489725, ECO:0000312|HGNC:HGNC:4024}**Function**

mRNA-binding protein that acts as a regulator of mRNAs translation and/or stability, and which is required for adult hippocampal neurogenesis (By similarity). Specifically binds to AU-rich elements (AREs) in the 3'-UTR of target mRNAs (By similarity). Promotes formation of some phase-separated membraneless compartment by undergoing liquid-liquid phase separation upon binding to AREs-containing mRNAs: mRNAs storage into membraneless compartments regulates their translation and/or stability (By similarity). Acts as a regulator of adult hippocampal neurogenesis by regulating translation and/or stability of NOG mRNA, thereby preventing NOG protein expression in the dentate gyrus (By similarity).

Cellular Location

Cytoplasm, Cytoplasmic ribonucleoprotein granule {ECO:0000250|UniProtKB:Q61584}. Cytoplasm Postsynapse {ECO:0000250|UniProtKB:Q9WVR4}. Note=Specifically localizes to cytoplasmic ribonucleoprotein membraneless compartments (By similarity). Localization to the post-synaptic

region is dependent on FMR1 (By similarity). {ECO:0000250|UniProtKB:Q61584, ECO:0000250|UniProtKB:Q9WVR4}

Tissue Location

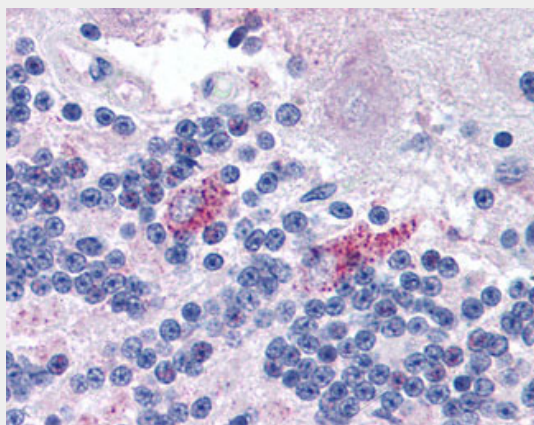
Expressed in all tissues examined including heart, brain, kidney and testis (PubMed:9259278). In brain, present at high level in neurons and especially in the Purkinje cells at the interface between the granular layer and the molecular layer (at protein level) (PubMed:9259278).

FXR2 Antibody (aa414-658, clone 1G2) - Protocols

Provided below are standard protocols that you may find useful for product applications.

- [Western Blot](#)
- [Blocking Peptides](#)
- [Dot Blot](#)
- [Immunohistochemistry](#)
- [Immunofluorescence](#)
- [Immunoprecipitation](#)
- [Flow Cytometry](#)
- [Cell Culture](#)

FXR2 Antibody (aa414-658, clone 1G2) - Images



Anti-FXR2 antibody IHC of human brain, cerebellum.

FXR2 Antibody (aa414-658, clone 1G2) - Background

RNA-binding protein.

FXR2 Antibody (aa414-658, clone 1G2) - References

Zhang Y., et al. EMBO J. 14:5358-5366(1995).
Kalnina N., et al. Submitted (AUG-2003) to the EMBL/GenBank/DDBJ databases.
Ota T., et al. Nat. Genet. 36:40-45(2004).
Mural R.J., et al. Submitted (SEP-2005) to the EMBL/GenBank/DDBJ databases.
Joseph D.R., et al. Steroids 63:2-4(1998).