

**SORBS1 / Ponsin Antibody (C-Terminus)**  
**Goat Polyclonal Antibody**  
**Catalog # ALS11900****Specification**

---

**SORBS1 / Ponsin Antibody (C-Terminus) - Product Information**

Application	IHC
Primary Accession	<a href="#">Q9BX66</a>
Reactivity	Human, Mouse, Rat, Hamster, Monkey, Horse, Dog
Host	Goat
Clonality	Polyclonal
Calculated MW	143kDa KDa

**SORBS1 / Ponsin Antibody (C-Terminus) - Additional Information****Gene ID** 10580**Other Names**

Sorbin and SH3 domain-containing protein 1, Ponsin, SH3 domain protein 5, SH3P12, c-Cbl-associated protein, CAP, SORBS1 ([http://www.genenames.org/cgi-bin/gene\\_symbol\\_report?hgnc\\_id=14565](http://www.genenames.org/cgi-bin/gene_symbol_report?hgnc_id=14565))  
target="\_blank">HGNC:14565</a>)

**Target/Specificity**

Human SORBS1. This antibody is expected to recognize all seven reported isoforms (NP\_006425.2, NP\_056200.1, NP\_001030126.1, NP\_001030127.1, NP\_001030128.1, NP\_079267.1 and NP\_001030129.1).

**Reconstitution & Storage**

Store at -20°C. Minimize freezing and thawing.

**Precautions**

SORBS1 / Ponsin Antibody (C-Terminus) is for research use only and not for use in diagnostic or therapeutic procedures.

**SORBS1 / Ponsin Antibody (C-Terminus) - Protein Information****Name** SORBS1 ([HGNC:14565](#))**Function**

Plays a role in tyrosine phosphorylation of CBL by linking CBL to the insulin receptor. Required for insulin-stimulated glucose transport. Involved in formation of actin stress fibers and focal adhesions (By similarity).

**Cellular Location**

Cell junction, adherens junction. Cell membrane. Cytoplasm, cytoskeleton. Cell junction, focal adhesion. Nucleus. Nucleus matrix. Note=Colocalizes with the Ten-1 ICD form of TENM1 in the

nucleus (By similarity). Colocalizes with actin stress fibers. Also detected at the plasma membrane and in neuronal intranuclear inclusions. Colocalized with PXN at focal adhesions during myogenic differentiation.

#### **Tissue Location**

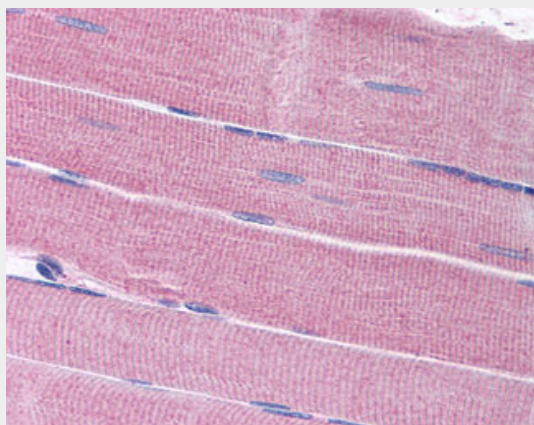
Detected in skeletal muscle (at protein level). Widely expressed with highest levels in heart and skeletal muscle

#### **SORBS1 / Ponsin Antibody (C-Terminus) - Protocols**

Provided below are standard protocols that you may find useful for product applications.

- [Western Blot](#)
- [Blocking Peptides](#)
- [Dot Blot](#)
- [Immunohistochemistry](#)
- [Immunofluorescence](#)
- [Immunoprecipitation](#)
- [Flow Cytometry](#)
- [Cell Culture](#)

#### **SORBS1 / Ponsin Antibody (C-Terminus) - Images**



Anti-SORBS1 antibody IHC of human skeletal muscle.

#### **SORBS1 / Ponsin Antibody (C-Terminus) - Background**

Plays a role in tyrosine phosphorylation of CBL by linking CBL to the insulin receptor. Required for insulin-stimulated glucose transport. Involved in formation of actin stress fibers and focal adhesions (By similarity).

#### **SORBS1 / Ponsin Antibody (C-Terminus) - References**

Lin W.-H., et al. Genomics 74:12-20(2001).  
Lebre A.-S., et al. Hum. Mol. Genet. 10:1201-1213(2001).  
Lin W.-H., et al. Hum. Mol. Genet. 10:1753-1760(2001).  
Vandenbroere I., et al. Biochem. Biophys. Res. Commun. 300:494-500(2003).  
Gehrmlich K., et al. J. Mol. Biol. 369:665-682(2007).