

**CD74 Antibody (clone LN2)**  
**Mouse Monoclonal Antibody**  
**Catalog # ALS11979****Specification****CD74 Antibody (clone LN2) - Product Information**

Application	IHC
Primary Accession	<a href="#">P04233</a>
Reactivity	Human
Host	Mouse
Clonality	Monoclonal
Calculated MW	34kDa KDa

**CD74 Antibody (clone LN2) - Additional Information****Gene ID** 972**Other Names**

HLA class II histocompatibility antigen gamma chain, HLA-DR antigens-associated invariant chain, Ia antigen-associated invariant chain, Ii, p33, CD74, CD74, DHLAG

**Target/Specificity**

SU-DHL-4 lymphoma cells

**Reconstitution & Storage**

Short term 4°C, long term aliquot and store at -20°C, avoid freeze thaw cycles.

**Precautions**

CD74 Antibody (clone LN2) is for research use only and not for use in diagnostic or therapeutic procedures.

**CD74 Antibody (clone LN2) - Protein Information****Name** CD74 ([HGNC:1697](#))**Synonyms** DHLAG**Function**

Plays a critical role in MHC class II antigen processing by stabilizing peptide-free class II alpha/beta heterodimers in a complex soon after their synthesis and directing transport of the complex from the endoplasmic reticulum to the endosomal/lysosomal system where the antigen processing and binding of antigenic peptides to MHC class II takes place. Serves as cell surface receptor for the cytokine MIF. [Isoform p41]: Stabilizes the conformation of mature CTSL by binding to its active site and serving as a chaperone to help maintain a pool of mature enzyme in endocytic compartments and extracellular space of antigen-presenting cells (APCs). Has antiviral activity by stymieing the endosomal entry of Ebola virus and coronaviruses, including SARS-CoV-2 (PubMed:<a href="http://www.uniprot.org/citations/32855215" target="\_blank">32855215</a>). Disrupts cathepsin-mediated Ebola virus glycoprotein processing, which prevents viral fusion and

entry. This antiviral activity is specific to p41 isoform (PubMed:<a href="http://www.uniprot.org/citations/32855215" target="\_blank">32855215</a>).

#### **Cellular Location**

Cell membrane; Single-pass type II membrane protein. Endoplasmic reticulum membrane. Golgi apparatus, trans-Golgi network. Endosome. Lysosome. Secreted. Note=Transits through a number of intracellular compartments in the endocytic pathway. It can either undergo proteolysis or reach the cell membrane

#### **Tissue Location**

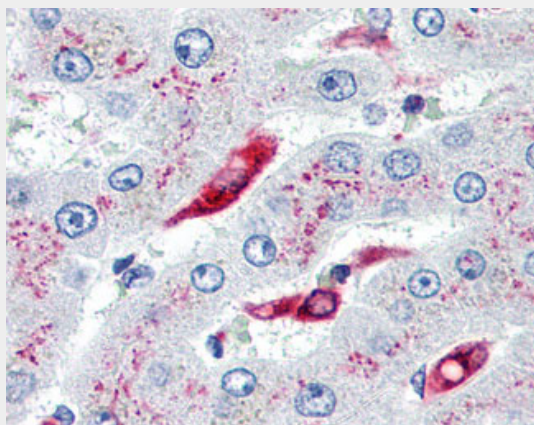
Detected in urine (at protein level). [Isoform p33]: In B cells, represents 70% of total CD74 expression.

### **CD74 Antibody (clone LN2) - Protocols**

Provided below are standard protocols that you may find useful for product applications.

- [Western Blot](#)
- [Blocking Peptides](#)
- [Dot Blot](#)
- [Immunohistochemistry](#)
- [Immunofluorescence](#)
- [Immunoprecipitation](#)
- [Flow Cytometry](#)
- [Cell Culture](#)

### **CD74 Antibody (clone LN2) - Images**



Anti-CD74 antibody IHC of human liver, Kupffer cells.

### **CD74 Antibody (clone LN2) - Background**

Plays a critical role in MHC class II antigen processing by stabilizing peptide-free class II alpha/beta heterodimers in a complex soon after their synthesis and directing transport of the complex from the endoplasmic reticulum to the endosomal/lysosomal system where the antigen processing and binding of antigenic peptides to MHC class II takes place. Serves as cell surface receptor for the cytokine MIF.

### **CD74 Antibody (clone LN2) - References**

Claesson L., et al. Proc. Natl. Acad. Sci. U.S.A. 80:7395-7399(1983).

Strubin M.,et al.EMBO J. 3:869-872(1984).  
Kudo J.,et al.Nucleic Acids Res. 13:8827-8841(1985).  
O'Sullivan D.M.,et al.Proc. Natl. Acad. Sci. U.S.A. 83:4484-4488(1986).  
Kalnine N.,et al.Submitted (OCT-2004) to the EMBL/GenBank/DDBJ databases.