

NR5A2 / LRH-1 Antibody (aa1-67)
Rabbit Polyclonal Antibody
Catalog # ALS11994**Specification**

NR5A2 / LRH-1 Antibody (aa1-67) - Product Information

Application	IHC, WB
Primary Accession	O00482
Reactivity	Human
Host	Rabbit
Clonality	Polyclonal
Calculated MW	61kDa KDa

NR5A2 / LRH-1 Antibody (aa1-67) - Additional Information**Gene ID** 2494**Other Names**

Nuclear receptor subfamily 5 group A member 2, Alpha-1-fetoprotein transcription factor, B1-binding factor, hB1F, CYP7A promoter-binding factor, Hepatocytic transcription factor, Liver receptor homolog 1, LRH-1, NR5A2, B1F, CPF, FTF

Target/Specificity

Peptide corresponding to amino acids 1-67 of human CPF, member 2, variant 2

Reconstitution & Storage

Aliquot and store at -20°C. Minimize freezing and thawing.

Precautions

NR5A2 / LRH-1 Antibody (aa1-67) is for research use only and not for use in diagnostic or therapeutic procedures.

NR5A2 / LRH-1 Antibody (aa1-67) - Protein Information**Name** NR5A2**Synonyms** B1F, CPF, FTF**Function**

Nuclear receptor that acts as a key metabolic sensor by regulating the expression of genes involved in bile acid synthesis, cholesterol homeostasis and triglyceride synthesis. Together with the oxysterol receptors NR1H3/LXR-alpha and NR1H2/LXR-beta, acts as an essential transcriptional regulator of lipid metabolism. Plays an anti-inflammatory role during the hepatic acute phase response by acting as a corepressor: inhibits the hepatic acute phase response by preventing dissociation of the N-Cor corepressor complex (PubMed:20159957). May be responsible for the liver-specific activity of enhancer II, probably in combination with other hepatocyte transcription factors. Key regulator of cholesterol 7-alpha-hydroxylase gene (CYP7A)

expression in liver. May also contribute to the regulation of pancreas-specific genes and play important roles in embryonic development. Activates the transcription of CYP2C38 (By similarity).

Cellular Location

Nucleus.

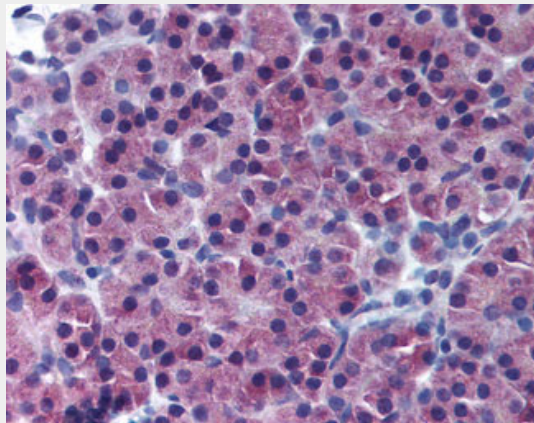
Tissue Location

Abundantly expressed in pancreas, less in liver, very low levels in heart and lung. Expressed in the Hep-G2 cell line Isoform 1 and isoform 2 seem to be present in fetal and adult liver and Hep-G2 cells

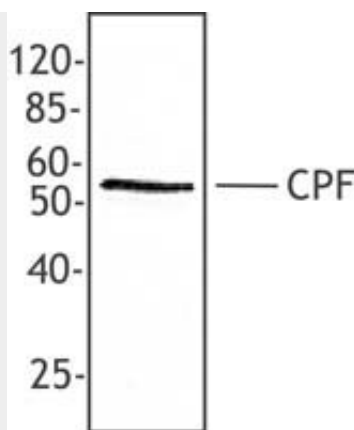
NR5A2 / LRH-1 Antibody (aa1-67) - Protocols

Provided below are standard protocols that you may find useful for product applications.

- [Western Blot](#)
- [Blocking Peptides](#)
- [Dot Blot](#)
- [Immunohistochemistry](#)
- [Immunofluorescence](#)
- [Immunoprecipitation](#)
- [Flow Cytometry](#)
- [Cell Culture](#)

NR5A2 / LRH-1 Antibody (aa1-67) - Images

Anti-NR5A2 antibody IHC of human pancreas.



HeLa cell nuclear extract was resolved by electrophoresis, transferred to nitrocellulose, and...

NR5A2 / LRH-1 Antibody (aa1-67) - Background

Binds to the sequence element 5'-AACGACCGACCTTGAG-3' of the enhancer II of hepatitis B virus genes, a critical cis-element of their expression and regulation. May be responsible for the liver-specific activity of enhancer II, probably in combination with other hepatocyte transcription factors. Key regulator of cholesterol 7- α -hydroxylase gene (CYP7A) expression in liver. May also contribute to the regulation of pancreas-specific genes and play important roles in embryonic development.

NR5A2 / LRH-1 Antibody (aa1-67) - References

- Li M., et al. J. Biol. Chem. 273:29022-29031(1998).
- Li M., et al. Submitted (JAN-1999) to the EMBL/GenBank/DDBJ databases.
- Nitta M., et al. Proc. Natl. Acad. Sci. U.S.A. 96:6660-6665(1999).
- Zhang C.K., et al. Gene 273:239-249(2001).
- Ota T., et al. Nat. Genet. 36:40-45(2004).