

CD74 Antibody (clone LN2)
Mouse Monoclonal Antibody
Catalog # ALS12027**Specification****CD74 Antibody (clone LN2) - Product Information**

Application	IHC
Primary Accession	P04233
Reactivity	Human, Baboon
Host	Mouse
Clonality	Monoclonal
Calculated MW	34kDa KDa

CD74 Antibody (clone LN2) - Additional Information**Gene ID** 972**Other Names**

HLA class II histocompatibility antigen gamma chain, HLA-DR antigens-associated invariant chain, Ia antigen-associated invariant chain, Ii, p33, CD74, CD74, DHLAG

Target/Specificity

SU-DHL-4 cells

Reconstitution & Storage

Store undiluted at 4 degrees C

Precautions

CD74 Antibody (clone LN2) is for research use only and not for use in diagnostic or therapeutic procedures.

CD74 Antibody (clone LN2) - Protein Information**Name** CD74 ([HGNC:1697](#))**Synonyms** DHLAG**Function**

Plays a critical role in MHC class II antigen processing by stabilizing peptide-free class II alpha/beta heterodimers in a complex soon after their synthesis and directing transport of the complex from the endoplasmic reticulum to the endosomal/lysosomal system where the antigen processing and binding of antigenic peptides to MHC class II takes place. Serves as cell surface receptor for the cytokine MIF. [Isoform p41]: Stabilizes the conformation of mature CTSL by binding to its active site and serving as a chaperone to help maintain a pool of mature enzyme in endocytic compartments and extracellular space of antigen-presenting cells (APCs). Has antiviral activity by stymieing the endosomal entry of Ebola virus and coronaviruses, including SARS-CoV-2 (PubMed:32855215). Disrupts cathepsin-mediated Ebola virus glycoprotein processing, which prevents viral fusion and

entry. This antiviral activity is specific to p41 isoform (PubMed:32855215).

Cellular Location

Cell membrane; Single-pass type II membrane protein. Endoplasmic reticulum membrane. Golgi apparatus, trans-Golgi network. Endosome. Lysosome. Secreted. Note=Transits through a number of intracellular compartments in the endocytic pathway. It can either undergo proteolysis or reach the cell membrane

Tissue Location

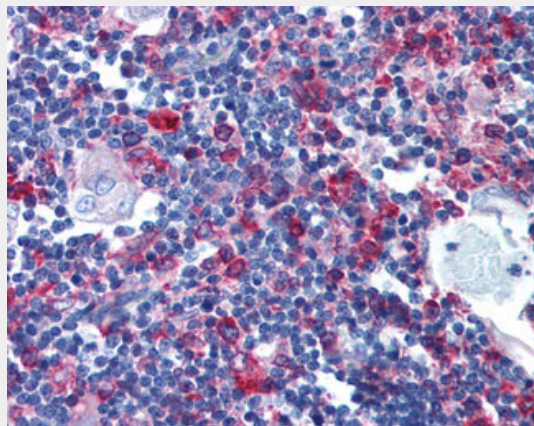
Detected in urine (at protein level). [Isoform p33]: In B cells, represents 70% of total CD74 expression.

CD74 Antibody (clone LN2) - Protocols

Provided below are standard protocols that you may find useful for product applications.

- [Western Blot](#)
- [Blocking Peptides](#)
- [Dot Blot](#)
- [Immunohistochemistry](#)
- [Immunofluorescence](#)
- [Immunoprecipitation](#)
- [Flow Cytometry](#)
- [Cell Culture](#)

CD74 Antibody (clone LN2) - Images



Anti-CD74 antibody IHC of human thymus.

CD74 Antibody (clone LN2) - Background

Plays a critical role in MHC class II antigen processing by stabilizing peptide-free class II alpha/beta heterodimers in a complex soon after their synthesis and directing transport of the complex from the endoplasmic reticulum to the endosomal/lysosomal system where the antigen processing and binding of antigenic peptides to MHC class II takes place. Serves as cell surface receptor for the cytokine MIF.

CD74 Antibody (clone LN2) - References

Claesson L., et al. Proc. Natl. Acad. Sci. U.S.A. 80:7395-7399(1983).

Strubin M.,et al.EMBO J. 3:869-872(1984).
Kudo J.,et al.Nucleic Acids Res. 13:8827-8841(1985).
O'Sullivan D.M.,et al.Proc. Natl. Acad. Sci. U.S.A. 83:4484-4488(1986).
Kalnine N.,et al.Submitted (OCT-2004) to the EMBL/GenBank/DDBJ databases.