

CDK4 Antibody (C-Terminus)
Rabbit Polyclonal Antibody
Catalog # ALS12032**Specification**

CDK4 Antibody (C-Terminus) - Product Information

Application	IHC
Primary Accession	P11802
Reactivity	Human, Mouse, Rat
Host	Rabbit
Clonality	Polyclonal
Calculated MW	34kDa KDa

CDK4 Antibody (C-Terminus) - Additional Information**Gene ID** 1019**Other Names**

Cyclin-dependent kinase 4, 2.7.11.22, Cell division protein kinase 4, PSK-J3, CDK4

Target/Specificity

Peptide mapping to the carboxy terminus of mouse Cdk4

Reconstitution & Storage

Store undiluted at 4 degrees C. Do not freeze.

Precautions

CDK4 Antibody (C-Terminus) is for research use only and not for use in diagnostic or therapeutic procedures.

CDK4 Antibody (C-Terminus) - Protein Information**Name** CDK4**Function**

Ser/Thr-kinase component of cyclin D-CDK4 (DC) complexes that phosphorylate and inhibit members of the retinoblastoma (RB) protein family including RB1 and regulate the cell-cycle during G(1)/S transition. Phosphorylation of RB1 allows dissociation of the transcription factor E2F from the RB/E2F complexes and the subsequent transcription of E2F target genes which are responsible for the progression through the G(1) phase. Hypophosphorylates RB1 in early G(1) phase. Cyclin D-CDK4 complexes are major integrators of various mitogenic and antimitogenic signals. Also phosphorylates SMAD3 in a cell-cycle-dependent manner and represses its transcriptional activity. Component of the ternary complex, cyclin D/CDK4/CDKN1B, required for nuclear translocation and activity of the cyclin D-CDK4 complex.

Cellular Location

Cytoplasm. Nucleus. Nucleus membrane. Note=Cytoplasmic when non-complexed Forms a cyclin D-CDK4 complex in the cytoplasm as cells progress through G(1) phase. The complex accumulates

on the nuclear membrane and enters the nucleus on transition from G(1) to S phase. Also present in nucleoli and heterochromatin lumps. Colocalizes with RB1 after release into the nucleus.

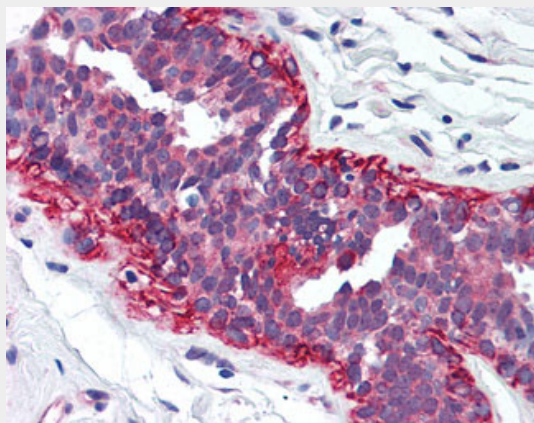
Volume

50 µl

CDK4 Antibody (C-Terminus) - Protocols

Provided below are standard protocols that you may find useful for product applications.

- [Western Blot](#)
- [Blocking Peptides](#)
- [Dot Blot](#)
- [Immunohistochemistry](#)
- [Immunofluorescence](#)
- [Immunoprecipitation](#)
- [Flow Cytometry](#)
- [Cell Culture](#)

CDK4 Antibody (C-Terminus) - Images

Anti-CDK4 antibody IHC of human breast.

CDK4 Antibody (C-Terminus) - Background

Ser/Thr-kinase component of cyclin D-CDK4 (DC) complexes that phosphorylate and inhibit members of the retinoblastoma (RB) protein family including RB1 and regulate the cell-cycle during G(1)/S transition. Phosphorylation of RB1 allows dissociation of the transcription factor E2F from the RB/E2F complexes and the subsequent transcription of E2F target genes which are responsible for the progression through the G(1) phase. Hypophosphorylates RB1 in early G(1) phase. Cyclin D-CDK4 complexes are major integrators of various mitogenenic and antimitogenic signals. Also phosphorylates SMAD3 in a cell-cycle-dependent manner and represses its transcriptional activity. Component of the ternary complex, cyclin D/CDK4/CDKN1B, required for nuclear translocation and activity of the cyclin D-CDK4 complex.

CDK4 Antibody (C-Terminus) - References

Hanks S.K.,et al.Submitted (FEB-1987) to the EMBL/GenBank/DDBJ databases.
Elkahloun A.G.,et al.Genomics 42:295-301(1997).
Wolfel T.,et al.Science 269:1281-1284(1995).

Zuo L.,et al.Nat. Genet. 12:97-99(1996).
Ota T.,et al.Nat. Genet. 36:40-45(2004).