

CRP / C-Reactive Protein Antibody
Rabbit Polyclonal Antibody
Catalog # ALS12043**Specification**

CRP / C-Reactive Protein Antibody - Product Information

Application	WB, IHC
Primary Accession	P02741
Reactivity	Human
Host	Rabbit
Clonality	Polyclonal
Calculated MW	25kDa KDa

CRP / C-Reactive Protein Antibody - Additional Information**Gene ID** 1401**Other Names**

C-reactive protein, C-reactive protein(1-205), CRP, PTX1

Target/Specificity

Recombinant (partial)

Reconstitution & Storage

Aliquot and store at -20°C. Minimize freezing and thawing.

Precautions

CRP / C-Reactive Protein Antibody is for research use only and not for use in diagnostic or therapeutic procedures.

CRP / C-Reactive Protein Antibody - Protein Information**Name** CRP**Synonyms** PTX1**Function**

Displays several functions associated with host defense: it promotes agglutination, bacterial capsular swelling, phagocytosis and complement fixation through its calcium-dependent binding to phosphorylcholine. Can interact with DNA and histones and may scavenge nuclear material released from damaged circulating cells.

Cellular Location

Secreted.

Tissue Location

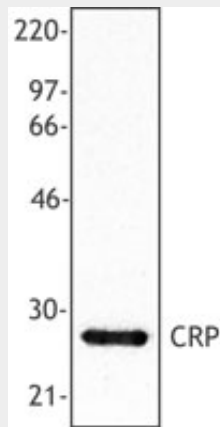
Found in plasma.

CRP / C-Reactive Protein Antibody - Protocols

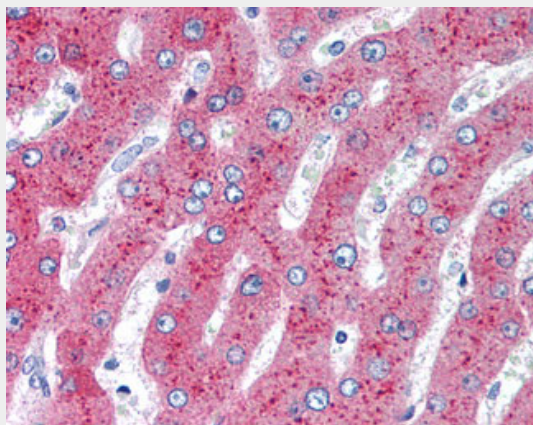
Provided below are standard protocols that you may find useful for product applications.

- [Western Blot](#)
- [Blocking Peptides](#)
- [Dot Blot](#)
- [Immunohistochemistry](#)
- [Immunofluorescence](#)
- [Immunoprecipitation](#)
- [Flow Cytometry](#)
- [Cell Culture](#)

CRP / C-Reactive Protein Antibody - Images



Recombinant human C-reactive protein (20 ng per lane) was resolved by electrophoresis,...



Anti-CRP / C-Reactive Protein antibody IHC of human liver.

CRP / C-Reactive Protein Antibody - Background

Displays several functions associated with host defense: it promotes agglutination, bacterial capsular swelling, phagocytosis and complement fixation through its calcium-dependent binding to phosphorylcholine. Can interact with DNA and histones and may scavenge nuclear material released from damaged circulating cells.

CRP / C-Reactive Protein Antibody - References

Lei K.-J.,et al.J. Biol. Chem. 260:13377-13383(1985).

Woo P.,et al.J. Biol. Chem. 260:13384-13388(1985).

Murphy T.M.,et al.Submitted (NOV-1990) to the EMBL/GenBank/DDBJ databases.

Tenchini M.L.,et al.Submitted (MAY-1992) to the EMBL/GenBank/DDBJ databases.

Harraghy N.,et al.Submitted (DEC-2001) to the EMBL/GenBank/DDBJ databases.