

**HAVCR1 / KIM-1 Antibody (aa200-300)**  
**Rabbit Polyclonal Antibody**  
**Catalog # ALS12075****Specification**

---

**HAVCR1 / KIM-1 Antibody (aa200-300) - Product Information**

Application	IHC
Primary Accession	<a href="#">O96D42</a>
Reactivity	Human, Mouse
Host	Rabbit
Clonality	Polyclonal
Calculated MW	39kDa KDa

**HAVCR1 / KIM-1 Antibody (aa200-300) - Additional Information****Gene ID** 26762**Other Names**

Hepatitis A virus cellular receptor 1, HAVcr-1, Kidney injury molecule 1, KIM-1, T-cell immunoglobulin and mucin domain-containing protein 1, TIMD-1, T-cell immunoglobulin mucin receptor 1, TIM, TIM-1, T-cell membrane protein 1, HAVCR1, KIM1, TIM1, TIMD1

**Target/Specificity**

A portion of amino acids 200-300 of human HAVCR1 protein was used as the immunogen.

**Reconstitution & Storage**

Store at 4°C for short term applications. For long term storage, aliquot and store at -20°C.

**Precautions**

HAVCR1 / KIM-1 Antibody (aa200-300) is for research use only and not for use in diagnostic or therapeutic procedures.

**HAVCR1 / KIM-1 Antibody (aa200-300) - Protein Information****Name** HAVCR1**Synonyms** KIM1, TIM1, TIMD1**Function**

Phosphatidylserine receptor that plays an important functional role in regulatory B-cells homeostasis including generation, expansion and suppressor functions (By similarity). As P-selectin/SELPLG ligand, plays a specialized role in activated but not naive T-cell trafficking during inflammatory responses (PubMed: [24703780](http://www.uniprot.org/citations/24703780)). Controls thereby T-cell accumulation in the inflamed central nervous system (CNS) and the induction of autoimmune disease (PubMed: [24703780](http://www.uniprot.org/citations/24703780)). Regulates also expression of various anti-inflammatory cytokines and co-inhibitory ligands including IL10 (By similarity). Acts as a regulator of T-cell proliferation (By similarity). May play a role in kidney injury

and repair (PubMed:<a href="http://www.uniprot.org/citations/17471468" target="\_blank">17471468</a>).

**Cellular Location**

Cell membrane; Single-pass type I membrane protein

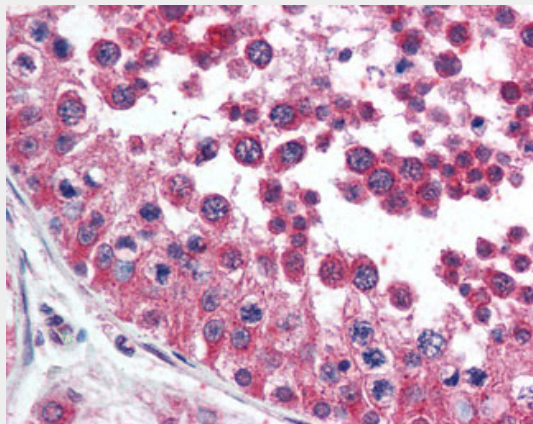
**Tissue Location**

Widely expressed, with highest levels in kidney and testis. Expressed by activated CD4+ T-cells during the development of helper T-cells responses.

**HAVCR1 / KIM-1 Antibody (aa200-300) - Protocols**

Provided below are standard protocols that you may find useful for product applications.

- [Western Blot](#)
- [Blocking Peptides](#)
- [Dot Blot](#)
- [Immunohistochemistry](#)
- [Immunofluorescence](#)
- [Immunoprecipitation](#)
- [Flow Cytometry](#)
- [Cell Culture](#)

**HAVCR1 / KIM-1 Antibody (aa200-300) - Images**

Anti-TIM-1 antibody IHC of human testis.

**HAVCR1 / KIM-1 Antibody (aa200-300) - Background**

May play a role in T-helper cell development and the regulation of asthma and allergic diseases. Receptor for TIMD4 (By similarity). In case of human hepatitis A virus (HHAV) infection, functions as a cell-surface receptor for the virus. May play a role in kidney injury and repair.

**HAVCR1 / KIM-1 Antibody (aa200-300) - References**

Feigelshtock D.,et al.J. Virol. 72:6621-6628(1998).  
Ebert L.,et al.Submitted (JUN-2004) to the EMBL/GenBank/DDBJ databases.  
Schmutz J.,et al.Nature 431:268-274(2004).  
Tami C.,et al.J. Virol. 81:3437-3446(2007).  
van Timmeren M.M.,et al.J. Pathol. 212:209-217(2007).