

MECP2 Antibody (aa11-25)
Rabbit Polyclonal Antibody
Catalog # ALS12096**Specification**

MECP2 Antibody (aa11-25) - Product Information

Application	IHC
Primary Accession	P51608
Reactivity	Human
Host	Rabbit
Clonality	Polyclonal
Calculated MW	52kDa KDa

MECP2 Antibody (aa11-25) - Additional Information**Gene ID** 4204**Other Names**

Methyl-CpG-binding protein 2, MeCp-2 protein, MeCp2, MECP2

Target/Specificity

A mixture of synthetic peptides corresponding to amino acids 11-25 and 181-195 of human MeCP2.

Reconstitution & Storage

Short term 4°C, long term aliquot and store at -20°C, avoid freeze thaw cycles.

Precautions

MECP2 Antibody (aa11-25) is for research use only and not for use in diagnostic or therapeutic procedures.

MECP2 Antibody (aa11-25) - Protein Information**Name** MECP2**Function**

Chromosomal protein that binds to methylated DNA. It can bind specifically to a single methyl-CpG pair. It is not influenced by sequences flanking the methyl-CpGs. Mediates transcriptional repression through interaction with histone deacetylase and the corepressor SIN3A. Binds both 5-methylcytosine (5mC) and 5-hydroxymethylcytosine (5hmC)- containing DNA, with a preference for 5-methylcytosine (5mC).

Cellular Location

Nucleus {ECO:0000250|UniProtKB:Q9Z2D6}. Note=Colocalized with methyl-CpG in the genome. Colocalized with TBL1X to the heterochromatin foci.

Tissue Location

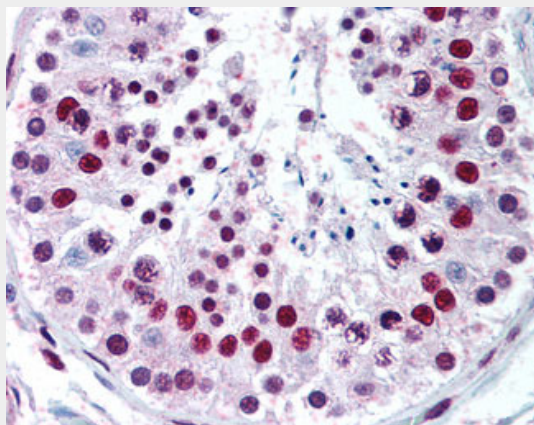
Present in all adult somatic tissues tested.

MECP2 Antibody (aa11-25) - Protocols

Provided below are standard protocols that you may find useful for product applications.

- [Western Blot](#)
- [Blocking Peptides](#)
- [Dot Blot](#)
- [Immunohistochemistry](#)
- [Immunofluorescence](#)
- [Immunoprecipitation](#)
- [Flow Cytometry](#)
- [Cell Culture](#)

MECP2 Antibody (aa11-25) - Images



Anti-MECP2 antibody IHC of human testis.

MECP2 Antibody (aa11-25) - Background

Chromosomal protein that binds to methylated DNA. It can bind specifically to a single methyl-CpG pair. It is not influenced by sequences flanking the methyl-CpGs. Mediates transcriptional repression through interaction with histone deacetylase and the corepressor SIN3A. Binds both 5-methylcytosine (5mC) and 5-hydroxymethylcytosine (5hmC)-containing DNA, with a preference for 5-methylcytosine (5mC) (By similarity).

MECP2 Antibody (aa11-25) - References

Kudo S., et al. Mol. Cell. Biol. 18:5492-5499(1998).
Vilain A., et al. Cytogenet. Cell Genet. 74:293-294(1996).
Coy J.F., et al. Hum. Mol. Genet. 8:1253-1262(1999).
Reichwald K., et al. Mamm. Genome 11:182-190(2000).
Mnatzakanian G.N., et al. Nat. Genet. 36:339-341(2004).