

JUP/CTNNG/Junction Plakoglobin Antibody (C-Terminus)
Goat Polyclonal Antibody
Catalog # ALS12170**Specification**

JUP/CTNNG/Junction Plakoglobin Antibody (C-Terminus) - Product Information

Application	IHC
Primary Accession	P14923
Reactivity	Human, Mouse, Rabbit, Hamster, Monkey, Dog
Host	Goat
Clonality	Polyclonal
Calculated MW	82kDa KDa

JUP/CTNNG/Junction Plakoglobin Antibody (C-Terminus) - Additional Information**Gene ID** 3728**Other Names**

Junction plakoglobin, Catenin gamma, Desmoplakin III, Desmoplakin-3, JUP, CTNNG, DP3

Target/Specificity

Human JUP / Gamma Catenin. This antibody is expected to recognise both reported isoforms, as represented by NP_002221.1 and NP_068831.1.

Reconstitution & Storage

Store at -20°C. Minimize freezing and thawing.

Precautions

JUP/CTNNG/Junction Plakoglobin Antibody (C-Terminus) is for research use only and not for use in diagnostic or therapeutic procedures.

JUP/CTNNG/Junction Plakoglobin Antibody (C-Terminus) - Protein Information**Name** JUP ([HGNC:6207](#))**Function**

Common junctional plaque protein. The membrane-associated plaques are architectural elements in an important strategic position to influence the arrangement and function of both the cytoskeleton and the cells within the tissue. The presence of plakoglobin in both the desmosomes and in the intermediate junctions suggests that it plays a central role in the structure and function of submembranous plaques. Acts as a substrate for VE-PTP and is required by it to stimulate VE-cadherin function in endothelial cells. Can replace beta-catenin in E-cadherin/catenin adhesion complexes which are proposed to couple cadherins to the actin cytoskeleton (By similarity).

Cellular Location

Cell junction, adherens junction. Cell junction, desmosome. Cytoplasm, cytoskeleton. Membrane; Peripheral membrane protein. Note=Cytoplasmic in a soluble and membrane-associated form

Tissue Location

Expressed in the heart (at protein level).

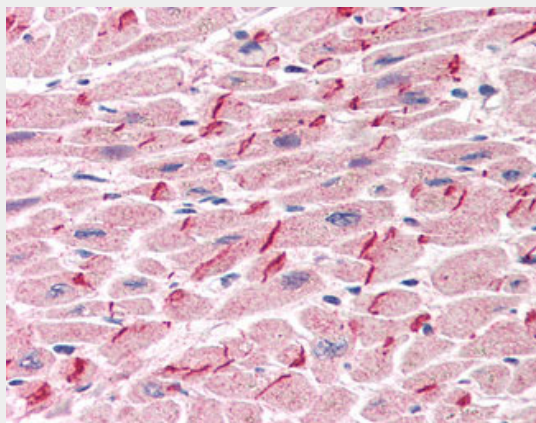
Volume

50 µl

JUP/CTNNG/Junction Plakoglobin Antibody (C-Terminus) - Protocols

Provided below are standard protocols that you may find useful for product applications.

- [Western Blot](#)
- [Blocking Peptides](#)
- [Dot Blot](#)
- [Immunohistochemistry](#)
- [Immunofluorescence](#)
- [Immunoprecipitation](#)
- [Flow Cytometry](#)
- [Cell Culture](#)

JUP/CTNNG/Junction Plakoglobin Antibody (C-Terminus) - Images

Anti-Gamma Catenin antibody IHC of human heart.

JUP/CTNNG/Junction Plakoglobin Antibody (C-Terminus) - Background

Common junctional plaque protein. The membrane-associated plaques are architectural elements in an important strategic position to influence the arrangement and function of both the cytoskeleton and the cells within the tissue. The presence of plakoglobin in both the desmosomes and in the intermediate junctions suggests that it plays a central role in the structure and function of submembranous plaques. Acts as a substrate for VE-PTP and is required by it to stimulate VE-cadherin function in endothelial cells. Can replace beta-catenin in E-cadherin/catenin adhesion complexes which are proposed to couple cadherins to the actin cytoskeleton (By similarity).

JUP/CTNNG/Junction Plakoglobin Antibody (C-Terminus) - References

Franke W.W., et al. Proc. Natl. Acad. Sci. U.S.A. 86:4027-4031(1989).
Zimbelmann R., et al. Submitted (DEC-1995) to the EMBL/GenBank/DDBJ databases.
Whitlock N.V., et al. Exp. Dermatol. 9:323-326(2000).
Liang X.-J., et al. Submitted (FEB-2003) to the EMBL/GenBank/DDBJ databases.
Zody M.C., et al. Nature 440:1045-1049(2006).

