

QIP1 / KPNA4 Antibody (C-Terminus)
Goat Polyclonal Antibody
Catalog # ALS12203**Specification**

QIP1 / KPNA4 Antibody (C-Terminus) - Product Information

Application	WB
Primary Accession	O00629
Reactivity	Human, Rabbit, Hamster, Monkey, Horse, Bovine, Dog
Host	Goat
Clonality	Polyclonal
Calculated MW	58kDa KDa

QIP1 / KPNA4 Antibody (C-Terminus) - Additional Information**Gene ID** 3840**Other Names**

Importin subunit alpha-3, Importin alpha Q1, Qip1, Karyopherin subunit alpha-4, KPNA4, QIP1

Target/Specificity

Human KPNA4.

Reconstitution & Storage

Store at -20°C. Minimize freezing and thawing.

Precautions

QIP1 / KPNA4 Antibody (C-Terminus) is for research use only and not for use in diagnostic or therapeutic procedures.

QIP1 / KPNA4 Antibody (C-Terminus) - Protein Information**Name** KPNA4**Synonyms** QIP1**Function**

Functions in nuclear protein import as an adapter protein for nuclear receptor KPNB1. Binds specifically and directly to substrates containing either a simple or bipartite NLS motif. Docking of the importin/substrate complex to the nuclear pore complex (NPC) is mediated by KPNB1 through binding to nucleoporin FxFG repeats and the complex is subsequently translocated through the pore by an energy requiring, Ran-dependent mechanism. At the nucleoplasmic side of the NPC, Ran binds to importin-beta and the three components separate and importin-alpha and -beta are re-exported from the nucleus to the cytoplasm where GTP hydrolysis releases Ran from importin. The directionality of nuclear import is thought to be conferred by an asymmetric distribution of the GTP- and GDP-bound forms of Ran between the cytoplasm and nucleus. In vitro, mediates the nuclear import of human cytomegalovirus UL84 by recognizing a non-classical NLS. In vitro,

mediates the nuclear import of human cytomegalovirus UL84 by recognizing a non-classical NLS.

Cellular Location

Cytoplasm. Nucleus.

Tissue Location

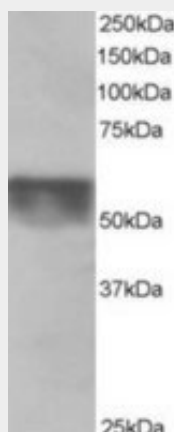
Highly expressed in testis, ovary, small intestine, heart, skeletal muscle, lung and pancreas, but barely detectable in kidney, thymus, colon and peripheral blood leukocytes

QIP1 / KPNA4 Antibody (C-Terminus) - Protocols

Provided below are standard protocols that you may find useful for product applications.

- [Western Blot](#)
- [Blocking Peptides](#)
- [Dot Blot](#)
- [Immunohistochemistry](#)
- [Immunofluorescence](#)
- [Immunoprecipitation](#)
- [Flow Cytometry](#)
- [Cell Culture](#)

QIP1 / KPNA4 Antibody (C-Terminus) - Images



Antibody staining (0.5 ug/ml) of Human Testis lysate (RIPA buffer, 35 ug total protein per lane).

QIP1 / KPNA4 Antibody (C-Terminus) - Background

Functions in nuclear protein import as an adapter protein for nuclear receptor KPNB1. Binds specifically and directly to substrates containing either a simple or bipartite NLS motif. Docking of the importin/substrate complex to the nuclear pore complex (NPC) is mediated by KPNB1 through binding to nucleoporin FxFG repeats and the complex is subsequently translocated through the pore by an energy requiring, Ran- dependent mechanism. At the nucleoplasmic side of the NPC, Ran binds to importin-beta and the three components separate and importin-alpha and -beta are re-exported from the nucleus to the cytoplasm where GTP hydrolysis releases Ran from importin. The directionality of nuclear import is thought to be conferred by an asymmetric distribution of the GTP- and GDP-bound forms of Ran between the cytoplasm and nucleus. In vitro, mediates the nuclear import of human cytomegalovirus UL84 by recognizing a non- classical NLS. In vitro, mediates the nuclear import of human cytomegalovirus UL84 by recognizing a non-classical NLS.

QIP1 / KPNA4 Antibody (C-Terminus) - References

Seki T.,et al.Biochem. Biophys. Res. Commun. 234:48-53(1997).
Koehler M.,et al.FEBS Lett. 417:104-108(1997).
Ota T.,et al.Nat. Genet. 36:40-45(2004).
Mural R.J.,et al.Submitted (SEP-2005) to the EMBL/GenBank/DDBJ databases.
Lischka P.,et al.J. Virol. 77:3734-3748(2003).