

PLEKHA8 Antibody (C-Terminus)
Goat Polyclonal Antibody
Catalog # ALS12220**Specification**

PLEKHA8 Antibody (C-Terminus) - Product Information

Application	IHC
Primary Accession	O96JA3
Reactivity	Human
Host	Goat
Clonality	Polyclonal
Calculated MW	58kDa KDa

PLEKHA8 Antibody (C-Terminus) - Additional Information**Gene ID** 84725**Other Names**

Pleckstrin homology domain-containing family A member 8, PH domain-containing family A member 8, Phosphatidylinositol-four-phosphate adapter protein 2, FAPP-2, Phosphoinositol 4-phosphate adapter protein 2, hFAPP2, Serologically defined breast cancer antigen NY-BR-86, PLEKHA8, FAPP2

Target/Specificity

Human PLEKHA8.

Reconstitution & Storage

Store at -20°C. Minimize freezing and thawing.

Precautions

PLEKHA8 Antibody (C-Terminus) is for research use only and not for use in diagnostic or therapeutic procedures.

PLEKHA8 Antibody (C-Terminus) - Protein Information**Name** PLEKHA8**Synonyms** FAPP2**Function**

Cargo transport protein that is required for apical transport from the Golgi complex. Transports AQP2 from the trans-Golgi network (TGN) to sites of AQP2 phosphorylation. Mediates the non-vesicular transport of glucosylceramide (GlcCer) from the trans-Golgi network (TGN) to the plasma membrane and plays a pivotal role in the synthesis of complex glycosphingolipids. Binding of both phosphatidylinositol 4-phosphate (PIP) and ARF1 are essential for the GlcCer transfer ability. Also required for primary cilium formation, possibly by being involved in the transport of raft lipids to the apical membrane, and for membrane tubulation.

Cellular Location

Golgi apparatus, trans-Golgi network membrane. Membrane; Peripheral membrane protein.

Note= Binds through its PH domain to PtdIns(4)P and ARF1, and subsequently localizes to TGN exit sites

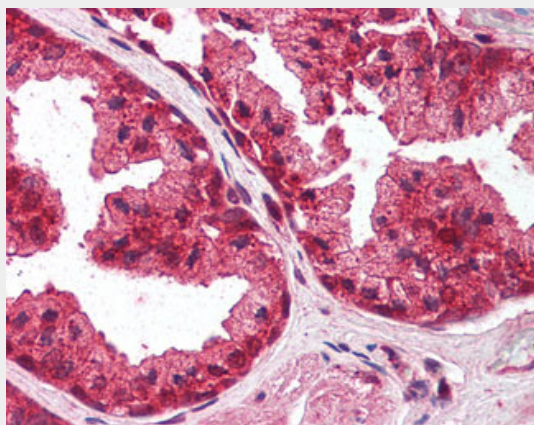
Tissue Location

Expressed in kidney cell lines.

PLEKHA8 Antibody (C-Terminus) - Protocols

Provided below are standard protocols that you may find useful for product applications.

- [Western Blot](#)
- [Blocking Peptides](#)
- [Dot Blot](#)
- [Immunohistochemistry](#)
- [Immunofluorescence](#)
- [Immunoprecipitation](#)
- [Flow Cytometry](#)
- [Cell Culture](#)

PLEKHA8 Antibody (C-Terminus) - Images

Anti-PLEKHA8 antibody IHC of human prostate.

PLEKHA8 Antibody (C-Terminus) - Background

Cargo transport protein that is required for apical transport from the Golgi complex. Transports AQP2 from the trans- Golgi network (TGN) to sites of AQP2 phosphorylation. Mediates the non-vesicular transport of glucosylceramide (GlcCer) from the trans-Golgi network (TGN) to the plasma membrane and plays a pivotal role in the synthesis of complex glycosphingolipids. Binding of both phosphatidylinositol 4-phosphate (PIP) and ARF1 are essential for the GlcCer transfer ability. Also required for primary cilium formation, possibly by being involved in the transport of raft lipids to the apical membrane, and for membrane tubulation.

PLEKHA8 Antibody (C-Terminus) - References

Dowler S.J., et al. Biochem. J. 351:19-31(2000).
Ota T., et al. Nat. Genet. 36:40-45(2004).
Mural R.J., et al. Submitted (JUL-2005) to the EMBL/GenBank/DDBJ databases.
Scanlan M.J., et al. Cancer Immun. 1:4-4(2001).

Godi A., et al. Nat. Cell Biol. 6:393-404(2004).