

CR1 / CD35 Antibody (clone E11, Azide-free)
Mouse Monoclonal Antibody
Catalog # ALS12318**Specification**

CR1 / CD35 Antibody (clone E11, Azide-free) - Product Information

Application	IHC
Primary Accession	P17927
Reactivity	Human, Baboon
Host	Mouse
Clonality	Monoclonal
Calculated MW	224kDa KDa

CR1 / CD35 Antibody (clone E11, Azide-free) - Additional Information**Gene ID** 1378**Other Names**

Complement receptor type 1, C3b/C4b receptor, CD35, CR1, C3BR

Target/Specificity

Is a single chain cell surface glycoprotein which exists in four allotypic forms (A, B, C, D) of 190kD, 220kD, 160kD and 250kD respectively. The molecule is expressed by granulocytes, monocytes, B cells and some T cells. Functionally CD35 acts as a r ...

Reconstitution & Storage

+4°C or -20°C, Avoid repeated freezing and thawing.

Precautions

CR1 / CD35 Antibody (clone E11, Azide-free) is for research use only and not for use in diagnostic or therapeutic procedures.

CR1 / CD35 Antibody (clone E11, Azide-free) - Protein Information**Name** CR1**Synonyms** C3BR**Function**

Membrane immune adherence receptor that plays a critical role in the capture and clearance of complement-opsonized pathogens by erythrocytes and monocytes/macrophages (PubMed:2963069). Mediates the binding by these cells of particles and immune complexes that have activated complement to eliminate them from the circulation (PubMed:2963069). Acts also in the inhibition of spontaneous complement activation by impairing the formation and function of the alternative and classical pathway C3/C5 convertases, and by serving as a cofactor for the cleavage by factor I of C3b to iC3b, C3c and C3d,g, and of C4b to C4c and C4d (PubMed:2972794).

target="_blank">2972794, PubMed:8175757). Also plays a role in immune regulation by contributing, upon ligand binding, to the generation of regulatory T cells from activated helper T cells (PubMed:25742728).

Cellular Location

Membrane; Single- pass type I membrane protein

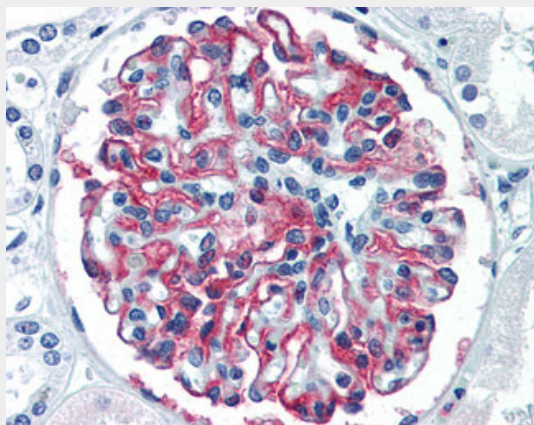
Tissue Location

Present on erythrocytes, a subset of T cells, mature B cells, follicular dendritic cells, monocytes and granulocytes

CR1 / CD35 Antibody (clone E11, Azide-free) - Protocols

Provided below are standard protocols that you may find useful for product applications.

- [Western Blot](#)
- [Blocking Peptides](#)
- [Dot Blot](#)
- [Immunohistochemistry](#)
- [Immunofluorescence](#)
- [Immunoprecipitation](#)
- [Flow Cytometry](#)
- [Cell Culture](#)

CR1 / CD35 Antibody (clone E11, Azide-free) - Images

Anti-CD35 antibody IHC of human kidney.

CR1 / CD35 Antibody (clone E11, Azide-free) - Background

Mediates cellular binding of particles and immune complexes that have activated complement.

CR1 / CD35 Antibody (clone E11, Azide-free) - References

Klickstein L.B., et al. J. Exp. Med. 168:1699-1717(1988).
Vik D.P., et al. J. Immunol. 151:6214-6224(1993).
Gregory S.G., et al. Nature 441:315-321(2006).
Wong W.W., et al. J. Exp. Med. 169:847-863(1989).
Hourcade D., et al. J. Exp. Med. 168:1255-1270(1988).