

KRT19 / CK19 / Cytokeratin 19 Antibody (aa312-335, clone A53-B/A2.26)
Mouse Monoclonal Antibody
Catalog # ALS12367**Specification**

KRT19 / CK19 / Cytokeratin 19 Antibody (aa312-335, clone A53-B/A2.26) - Product Information

Application	IHC
Primary Accession	P08727
Reactivity	Human, Mouse, Rat, Guinea Pig
Host	Mouse
Clonality	Monoclonal
Calculated MW	44kDa KDa

KRT19 / CK19 / Cytokeratin 19 Antibody (aa312-335, clone A53-B/A2.26) - Additional Information**Gene ID** 3880**Other Names**

Keratin, type I cytoskeletal 19, Cytokeratin-19, CK-19, Keratin-19, K19, KRT19

Target/Specificity

Recognizes the rod domain of keratin 19 (40kD). Reacts with the MCF-7 cells, which are known to contain keratin 19. It shows no reaction with the cells lacking keratin 19 such as A431 and HeLa. Species cross-reactivity: Human. Weak reactivity with ra ...

Reconstitution & Storage

Long term: -20°C; Short term: +4°C. Avoid repeat freeze-thaw cycles.

Precautions

KRT19 / CK19 / Cytokeratin 19 Antibody (aa312-335, clone A53-B/A2.26) is for research use only and not for use in diagnostic or therapeutic procedures.

KRT19 / CK19 / Cytokeratin 19 Antibody (aa312-335, clone A53-B/A2.26) - Protein Information**Name** KRT19**Function**

Involved in the organization of myofibers. Together with KRT8, helps to link the contractile apparatus to dystrophin at the costameres of striated muscle.

Tissue Location

Expressed in a defined zone of basal keratinocytes in the deep outer root sheath of hair follicles. Also observed in sweat gland and mammary gland ductal and secretory cells, bile ducts, gastrointestinal tract, bladder urothelium, oral epithelia, esophagus, ectocervical epithelium (at protein level). Expressed in epidermal basal cells, in nipple epidermis and a defined region of the

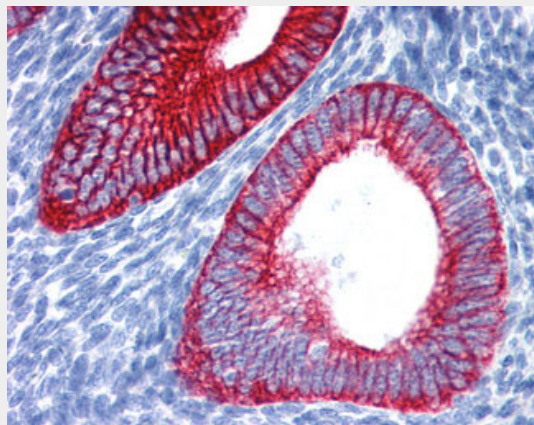
hair follicle. Also seen in a subset of vascular wall cells in both the veins and artery of human umbilical cord, and in umbilical cord vascular smooth muscle. Observed in muscle fibers accumulating in the costameres of myoplasm at the sarcolemma in structures that contain dystrophin and spectrin.

KRT19 / CK19 / Cytokeratin 19 Antibody (aa312-335, clone A53-B/A2.26) - Protocols

Provided below are standard protocols that you may find useful for product applications.

- [Western Blot](#)
- [Blocking Peptides](#)
- [Dot Blot](#)
- [Immunohistochemistry](#)
- [Immunofluorescence](#)
- [Immunoprecipitation](#)
- [Flow Cytometry](#)
- [Cell Culture](#)

KRT19 / CK19 / Cytokeratin 19 Antibody (aa312-335, clone A53-B/A2.26) - Images



Anti-Cytokeratin 19 antibody IHC of human uterus.

KRT19 / CK19 / Cytokeratin 19 Antibody (aa312-335, clone A53-B/A2.26) - Background

Involved in the organization of myofibers. Together with KRT8, helps to link the contractile apparatus to dystrophin at the costameres of striated muscle.

KRT19 / CK19 / Cytokeratin 19 Antibody (aa312-335, clone A53-B/A2.26) - References

Stasiak P.C., et al. Nucleic Acids Res. 15:10058-10058(1987).
Bader B.L., et al. Eur. J. Cell Biol. 47:300-319(1988).
Eckert R.L., et al. Proc. Natl. Acad. Sci. U.S.A. 85:1114-1118(1988).
Stasiak P.C., et al. J. Invest. Dermatol. 92:707-716(1989).
Whitlock N.V., et al. Biochem. Biophys. Res. Commun. 267:462-465(2000).