

LRP1 / CD91 Antibody (clone 5A6)
Mouse Monoclonal Antibody
Catalog # ALS12383**Specification**

LRP1 / CD91 Antibody (clone 5A6) - Product Information

Application	IHC
Primary Accession	Q07954
Reactivity	Human, Mouse, Rabbit
Host	Mouse
Clonality	Monoclonal
Calculated MW	505kDa KDa

LRP1 / CD91 Antibody (clone 5A6) - Additional Information**Gene ID** 4035**Other Names**

Prolow-density lipoprotein receptor-related protein 1, LRP-1, Alpha-2-macroglobulin receptor, A2MR, Apolipoprotein E receptor, APOER, CD91, Low-density lipoprotein receptor-related protein 1 85 kDa subunit, LRP-85, Low-density lipoprotein receptor-related protein 1 515 kDa subunit, LRP-515, Low-density lipoprotein receptor-related protein 1 intracellular domain, LRPICD, LRP1, A2MR, APR

Target/Specificity

Recognises the 85kDa cleaved fragment of Low Density LRP (extracellular domain).

Reconstitution & Storage

+4°C or -20°C, Avoid repeated freezing and thawing.

Precautions

LRP1 / CD91 Antibody (clone 5A6) is for research use only and not for use in diagnostic or therapeutic procedures.

LRP1 / CD91 Antibody (clone 5A6) - Protein Information**Name** LRP1 ([HGNC:6692](#))**Synonyms** A2MR, APR**Function**

Endocytic receptor involved in endocytosis and in phagocytosis of apoptotic cells (PubMed:11907044, PubMed:12713657). Required for early embryonic development (By similarity). Involved in cellular lipid homeostasis. Involved in the plasma clearance of chylomicron remnants and activated LRPAP1 (alpha 2-macroglobulin), as well as the local metabolism of complexes between plasminogen activators and their endogenous inhibitors. Acts as an LRPAP1 alpha-2- macroglobulin receptor (PubMed:26142438, PubMed:1702392). Acts as TAU/MAPT receptor and controls the endocytosis of TAU/MAPT as well as its subsequent spread (PubMed:32296178). May modulate cellular events, such as APP metabolism, kinase-dependent intracellular signaling, neuronal calcium signaling as well as neurotransmission (PubMed:12888553).

Cellular Location

[Low-density lipoprotein receptor-related protein 1 85 kDa subunit]: Cell membrane; Single-pass type I membrane protein Membrane, coated pit [Low-density lipoprotein receptor-related protein 1 intracellular domain]: Cytoplasm Nucleus. Note=After cleavage, the intracellular domain (LRPICD) is detected both in the cytoplasm and in the nucleus.

Tissue Location

Most abundant in liver, brain and lung.

Volume

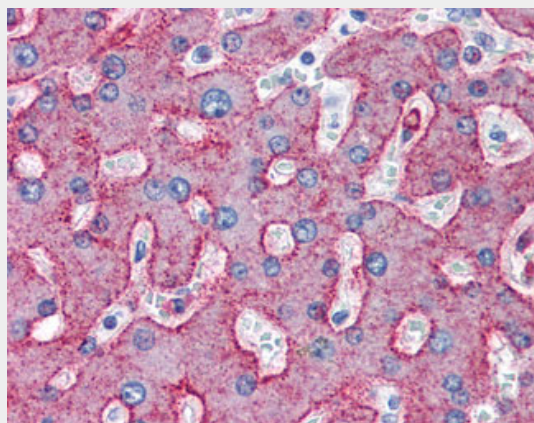
50 µl

LRP1 / CD91 Antibody (clone 5A6) - Protocols

Provided below are standard protocols that you may find useful for product applications.

- [Western Blot](#)
- [Blocking Peptides](#)
- [Dot Blot](#)
- [Immunohistochemistry](#)
- [Immunofluorescence](#)
- [Immunoprecipitation](#)
- [Flow Cytometry](#)
- [Cell Culture](#)

LRP1 / CD91 Antibody (clone 5A6) - Images



Anti-LRP1 / Low Density LRP antibody IHC of human liver.

LRP1 / CD91 Antibody (clone 5A6) - Background

Endocytic receptor involved in endocytosis and in phagocytosis of apoptotic cells. Required for early embryonic development. Involved in cellular lipid homeostasis. Involved in the plasma

clearance of chylomicron remnants and activated LRPAP1 (alpha 2-macroglobulin), as well as the local metabolism of complexes between plasminogen activators and their endogenous inhibitors. May modulate cellular events, such as APP metabolism, kinase-dependent intracellular signaling, neuronal calcium signaling as well as neurotransmission.

LRP1 / CD91 Antibody (clone 5A6) - References

Herz J.,et al.EMBO J. 7:4119-4127(1988).
Van Leuven F.,et al.Genomics 24:78-89(1994).
Van Leuven F.,et al.Genomics 52:138-144(1998).
Scherer S.E.,et al.Nature 440:346-351(2006).
Kutt H.,et al.Biochim. Biophys. Acta 1009:229-236(1989).