

BLIMP1 / PRDM1 Antibody (C-Terminus)
Rabbit Polyclonal Antibody
Catalog # ALS12422**Specification**

BLIMP1 / PRDM1 Antibody (C-Terminus) - Product Information

Application	IF, IHC
Primary Accession	O75626
Reactivity	Human, Mouse, Rat
Host	Rabbit
Clonality	Polyclonal
Calculated MW	92kDa KDa

BLIMP1 / PRDM1 Antibody (C-Terminus) - Additional Information**Gene ID** 639**Other Names**

PR domain zinc finger protein 1, 2.1.1.-, BLIMP-1, Beta-interferon gene positive regulatory domain I-binding factor, PR domain-containing protein 1, Positive regulatory domain I-binding factor 1, PRDI-BF1, PRDI-binding factor 1, PRDM1, BLIMP1

Target/Specificity

Human PRDM1 / BLIMP-1 (carboxy terminus).

Reconstitution & Storage

Short term 4°C, long term aliquot and store at -20°C, avoid freeze thaw cycles. Store undiluted.

Precautions

BLIMP1 / PRDM1 Antibody (C-Terminus) is for research use only and not for use in diagnostic or therapeutic procedures.

BLIMP1 / PRDM1 Antibody (C-Terminus) - Protein Information**Name** PRDM1**Synonyms** BLIMP1**Function**

Transcription factor that mediates a transcriptional program in various innate and adaptive immune tissue-resident lymphocyte T cell types such as tissue-resident memory T (Trm), natural killer (trNK) and natural killer T (NKT) cells and negatively regulates gene expression of proteins that promote the egress of tissue-resident T-cell populations from non-lymphoid organs. Plays a role in the development, retention and long-term establishment of adaptive and innate tissue-resident lymphocyte T cell types in non-lymphoid organs, such as the skin and gut, but also in other nonbarrier tissues like liver and kidney, and therefore may provide immediate immunological protection against reactivating infections or viral reinfection (By similarity). Binds specifically to the PRDI element in the promoter of the beta- interferon gene (PubMed:<a

[1851123](http://www.uniprot.org/citations/1851123)). Drives the maturation of B- lymphocytes into Ig secreting cells (PubMed: [12626569](http://www.uniprot.org/citations/12626569)). Associates with the transcriptional repressor ZNF683 to chromatin at gene promoter regions (By similarity). Binds to the promoter and acts as a transcriptional repressor of IRF8, thereby promotes transcription of osteoclast differentiation factors such as NFATC1 and EEIG1 (By similarity).

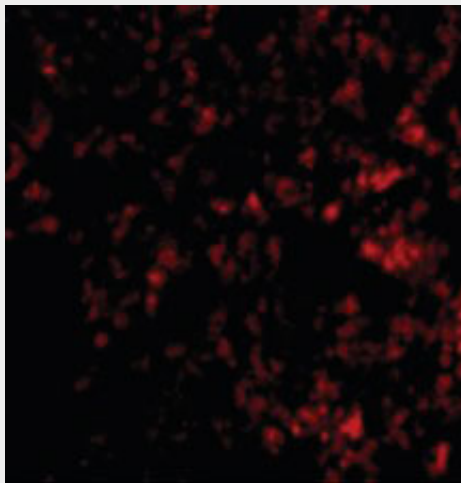
Cellular Location

Nucleus. Cytoplasm

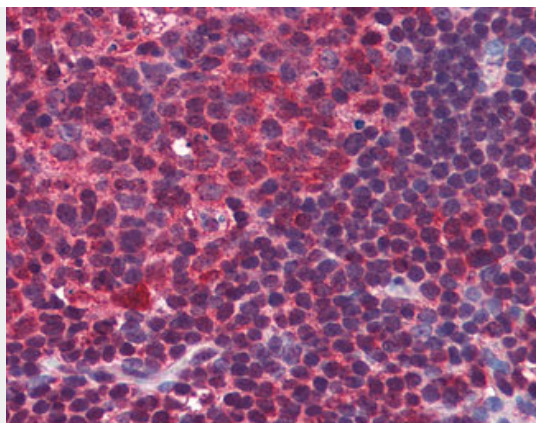
BLIMP1 / PRDM1 Antibody (C-Terminus) - Protocols

Provided below are standard protocols that you may find useful for product applications.

- [Western Blot](#)
- [Blocking Peptides](#)
- [Dot Blot](#)
- [Immunohistochemistry](#)
- [Immunofluorescence](#)
- [Immunoprecipitation](#)
- [Flow Cytometry](#)
- [Cell Culture](#)

BLIMP1 / PRDM1 Antibody (C-Terminus) - Images

Immunofluorescence of Blimp-1 in Mouse Lung cells with Blimp-1 antibody at 20 ug/ml.



Anti-BLIMP-1 antibody IHC of human colon, lymphoid follicle.

BLIMP1 / PRDM1 Antibody (C-Terminus) - Background

Transcriptional repressor that binds specifically to the PRDI element in the promoter of the beta-interferon gene (PubMed:1851123). Drives the maturation of B-lymphocytes into Ig secreting cells (PubMed:12626569).

BLIMP1 / PRDM1 Antibody (C-Terminus) - References

Keller A.D.,et al.Genes Dev. 5:868-879(1991).
Gyory I.,et al.J. Immunol. 170:3125-3133(2003).
Mungall A.J.,et al.Nature 425:805-811(2003).
Mural R.J.,et al.Submitted (SEP-2005) to the EMBL/GenBank/DDBJ databases.
Julaton V.T.,et al.Hum. Mol. Genet. 20:2238-2250(2011).