

PAG1 Antibody (C-Terminus, clone PAG-C1)
Mouse Monoclonal Antibody
Catalog # ALS12480

Specification

PAG1 Antibody (C-Terminus, clone PAG-C1) - Product Information

Application	IHC
Primary Accession	O9NWO8
Reactivity	Human, Mouse, Rat, Bovine
Host	Mouse
Clonality	Monoclonal
Calculated MW	47kDa KDa

PAG1 Antibody (C-Terminus, clone PAG-C1) - Additional Information

Gene ID 55824

Other Names

Phosphoprotein associated with glycosphingolipid-enriched microdomains 1, Csk-binding protein, Transmembrane adapter protein PAG, Transmembrane phosphoprotein Cbp, PAG1, CBP, PAG

Target/Specificity

Recognizes an epitope located in the C-terminal domain of Csk-binding protein (Cbp / PAG), a 46 kD ubiquitously expressed transmembrane adaptor protein present in membrane rafts (glycosphingolipid-enriched microdomains), which however migrates on SDS ...

Reconstitution & Storage

+4°C or -20°C, Avoid repeated freezing and thawing.

Precautions

PAG1 Antibody (C-Terminus, clone PAG-C1) is for research use only and not for use in diagnostic or therapeutic procedures.

PAG1 Antibody (C-Terminus, clone PAG-C1) - Protein Information

Name PAG1

Synonyms CBP, PAG

Function

Negatively regulates TCR (T-cell antigen receptor)-mediated signaling in T-cells and FCER1 (high affinity immunoglobulin epsilon receptor)-mediated signaling in mast cells. Promotes CSK activation and recruitment to lipid rafts, which results in LCK inhibition. Inhibits immunological synapse formation by preventing dynamic arrangement of lipid raft proteins. May be involved in cell adhesion signaling.

Cellular Location

Cell membrane; Single-pass type III membrane protein Note=Present in lipid rafts

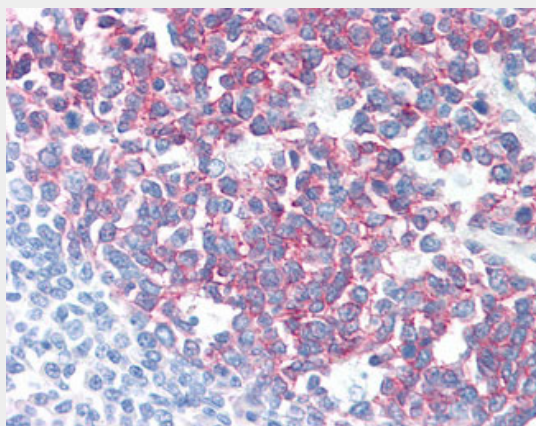
Tissue Location

Ubiquitously expressed. Present in germinal center B-cells, plasma cells, T-cells, monocytes and platelets (at protein level).

PAG1 Antibody (C-Terminus, clone PAG-C1) - Protocols

Provided below are standard protocols that you may find useful for product applications.

- [Western Blot](#)
- [Blocking Peptides](#)
- [Dot Blot](#)
- [Immunohistochemistry](#)
- [Immunofluorescence](#)
- [Immunoprecipitation](#)
- [Flow Cytometry](#)
- [Cell Culture](#)

PAG1 Antibody (C-Terminus, clone PAG-C1) - Images

Anti-PAG1 / PAG antibody IHC of human tonsil.

PAG1 Antibody (C-Terminus, clone PAG-C1) - Background

Negatively regulates TCR (T-cell antigen receptor)- mediated signaling in T-cells and FCER1 (high affinity immunoglobulin epsilon receptor)-mediated signaling in mast cells. Promotes CSK activation and recruitment to lipid rafts, which results in LCK inhibition. Inhibits immunological synapse formation by preventing dynamic arrangement of lipid raft proteins. May be involved in cell adhesion signaling.

PAG1 Antibody (C-Terminus, clone PAG-C1) - References

Brdicka T., et al. J. Exp. Med. 191:1591-1604(2000).
Ota T., et al. Nat. Genet. 36:40-45(2004).
Mural R.J., et al. Submitted (JUL-2005) to the EMBL/GenBank/DDBJ databases.
Brdickova N., et al. FEBS Lett. 507:133-136(2001).
Brill L.M., et al. Anal. Chem. 76:2763-2772(2004).