

**MUC16 / CA125 Antibody (clone X306)**  
**Mouse Monoclonal Antibody**  
**Catalog # ALS12497****Specification**

---

**MUC16 / CA125 Antibody (clone X306) - Product Information**

Application	IHC
Primary Accession	<a href="#">Q8WXI7</a>
Reactivity	Human
Host	Mouse
Clonality	Monoclonal
Calculated MW	2353kDa KDa

**MUC16 / CA125 Antibody (clone X306) - Additional Information****Gene ID** 94025**Other Names**

Mucin-16, MUC-16, Ovarian cancer-related tumor marker CA125, CA-125, Ovarian carcinoma antigen CA125, MUC16, CA125

**Target/Specificity**

CA125 was concluded by the International Society of Oncology and BioMarkers (ISOBM) to contain two major antigenic domains. Recognizes the epitope specificity group A, similar to the OC125 antibody. Not suitable for conjugation to HRP

**Reconstitution & Storage**

+4°C or -20°C, Avoid repeated freezing and thawing.

**Precautions**

MUC16 / CA125 Antibody (clone X306) is for research use only and not for use in diagnostic or therapeutic procedures.

**MUC16 / CA125 Antibody (clone X306) - Protein Information****Name** MUC16 ([HGNC:15582](#))**Function**

Thought to provide a protective, lubricating barrier against particles and infectious agents at mucosal surfaces.

**Cellular Location**

Cell membrane; Single-pass type I membrane protein. Secreted, extracellular space. Note=May be liberated into the extracellular space following the phosphorylation of the intracellular C-terminus which induces the proteolytic cleavage and liberation of the extracellular domain

**Tissue Location**

Expressed in corneal and conjunctival epithelia (at protein level). Overexpressed in ovarian

carcinomas and ovarian low malignant potential (LMP) tumors as compared to the expression in normal ovarian tissue and ovarian adenomas

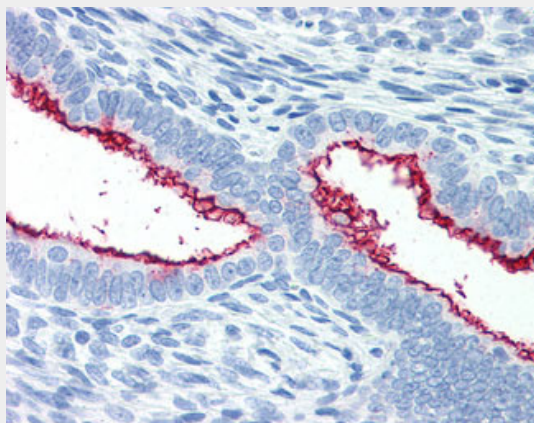
**Volume**

50 µl

**MUC16 / CA125 Antibody (clone X306) - Protocols**

Provided below are standard protocols that you may find useful for product applications.

- [Western Blot](#)
- [Blocking Peptides](#)
- [Dot Blot](#)
- [Immunohistochemistry](#)
- [Immunofluorescence](#)
- [Immunoprecipitation](#)
- [Flow Cytometry](#)
- [Cell Culture](#)

**MUC16 / CA125 Antibody (clone X306) - Images**

Anti-MUC16 / CA-125 antibody IHC of human uterus.

**MUC16 / CA125 Antibody (clone X306) - Background**

Thought to provide a protective, lubricating barrier against particles and infectious agents at mucosal surfaces.

**MUC16 / CA125 Antibody (clone X306) - References**

- O'Brien T.J., et al. Tumor Biol. 23:154-169(2002).  
O'Brien T.J., et al. Tumor Biol. 22:348-366(2001).  
Yin B.W.T., et al. J. Biol. Chem. 276:27371-27375(2001).  
Lloyd K.O., et al. Submitted (SEP-2003) to the EMBL/GenBank/DDBJ databases.  
Ota T., et al. Nat. Genet. 36:40-45(2004).