

**CD68 Antibody (clone KP1)**  
**Mouse Monoclonal Antibody**  
**Catalog # ALS12508****Specification**

---

**CD68 Antibody (clone KP1) - Product Information**

|                   |                         |
|-------------------|-------------------------|
| Application       | IHC                     |
| Primary Accession | <a href="#">P34810</a>  |
| Reactivity        | Human, Rat, Monkey, Cat |
| Host              | Mouse                   |
| Clonality         | Monoclonal              |
| Calculated MW     | 37kDa KDa               |

**CD68 Antibody (clone KP1) - Additional Information****Gene ID** 968**Other Names**

Macrosialin, Gp110, CD68, CD68

**Target/Specificity**

Recognizes the human glycoprotein of 110kD, which is identified as CD68. Species cross-reactivity: Monkey, feline, rat. Does not react with porcine, canine, chicken.

**Reconstitution & Storage**

Long term: -20°C; Short term: +4°C. Avoid repeat freeze-thaw cycles.

**Precautions**

CD68 Antibody (clone KP1) is for research use only and not for use in diagnostic or therapeutic procedures.

**CD68 Antibody (clone KP1) - Protein Information****Name** CD68**Function**

Could play a role in phagocytic activities of tissue macrophages, both in intracellular lysosomal metabolism and extracellular cell-cell and cell-pathogen interactions. Binds to tissue- and organ-specific lectins or selectins, allowing homing of macrophage subsets to particular sites. Rapid recirculation of CD68 from endosomes and lysosomes to the plasma membrane may allow macrophages to crawl over selectin-bearing substrates or other cells.

**Cellular Location**

[Isoform Short]: Cell membrane; Single-pass type I membrane protein

**Tissue Location**

Highly expressed by blood monocytes and tissue macrophages. Also expressed in lymphocytes, fibroblasts and endothelial cells. Expressed in many tumor cell lines which could allow them to

attach to selectins on vascular endothelium, facilitating their dissemination to secondary sites.

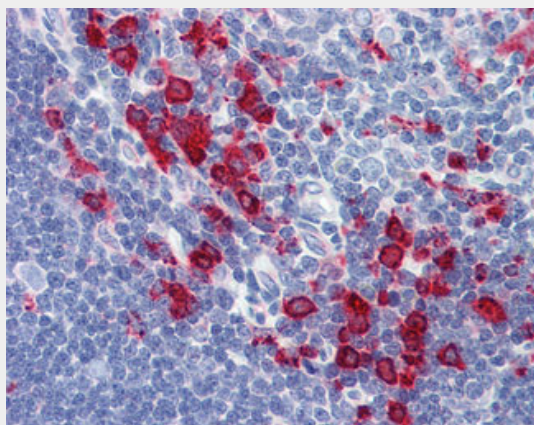
**Volume**  
50 µl

### **CD68 Antibody (clone KP1) - Protocols**

Provided below are standard protocols that you may find useful for product applications.

- [Western Blot](#)
- [Blocking Peptides](#)
- [Dot Blot](#)
- [Immunohistochemistry](#)
- [Immunofluorescence](#)
- [Immunoprecipitation](#)
- [Flow Cytometry](#)
- [Cell Culture](#)

### **CD68 Antibody (clone KP1) - Images**



Anti-CD68 antibody IHC of human thymus.

### **CD68 Antibody (clone KP1) - Background**

Could play a role in phagocytic activities of tissue macrophages, both in intracellular lysosomal metabolism and extracellular cell-cell and cell-pathogen interactions. Binds to tissue- and organ-specific lectins or selectins, allowing homing of macrophage subsets to particular sites. Rapid recirculation of CD68 from endosomes and lysosomes to the plasma membrane may allow macrophages to crawl over selectin-bearing substrates or other cells.

### **CD68 Antibody (clone KP1) - References**

Holness C.L., et al. Blood 81:1607-1613(1993).  
Kalnine N., et al. Submitted (JUL-2003) to the EMBL/GenBank/DDBJ databases.  
Ota T., et al. Nat. Genet. 36:40-45(2004).  
Suzuki Y., et al. Submitted (APR-2005) to the EMBL/GenBank/DDBJ databases.  
Zody M.C., et al. Nature 440:1045-1049(2006).