

APOC1 / Apolipoprotein C I Antibody
Goat Polyclonal Antibody
Catalog # ALS12534**Specification**

APOC1 / Apolipoprotein C I Antibody - Product Information

Application	IHC
Primary Accession	P02654
Reactivity	Human
Host	Goat
Clonality	Polyclonal
Calculated MW	9kDa KDa

APOC1 / Apolipoprotein C I Antibody - Additional Information**Gene ID** 341**Other Names**

Apolipoprotein C-I, Apo-CI, ApoC-I, Apolipoprotein C1, Truncated apolipoprotein C-I, APOC1

Target/Specificity

Recognizes human Apo C-I in plasma and lipoproteins. Does not cross-react with plasma Apo A-I, Apo A-II, Apo B-100, Apo C-II, Apo C-III and Apo-E.

Reconstitution & Storage

Long term: -20°C; Short term: +4°C. Avoid repeat freeze-thaw cycles.

Precautions

APOC1 / Apolipoprotein C I Antibody is for research use only and not for use in diagnostic or therapeutic procedures.

APOC1 / Apolipoprotein C I Antibody - Protein Information**Name** APOC1**Function**

Inhibitor of lipoprotein binding to the low density lipoprotein (LDL) receptor, LDL receptor-related protein, and very low density lipoprotein (VLDL) receptor. Associates with high density lipoproteins (HDL) and the triacylglycerol-rich lipoproteins in the plasma and makes up about 10% of the protein of the VLDL and 2% of that of HDL. Appears to interfere directly with fatty acid uptake and is also the major plasma inhibitor of cholesteryl ester transfer protein (CETP). Binds free fatty acids and reduces their intracellular esterification. Modulates the interaction of APOE with beta-migrating VLDL and inhibits binding of beta-VLDL to the LDL receptor-related protein.

Cellular Location

Secreted.

Tissue Location

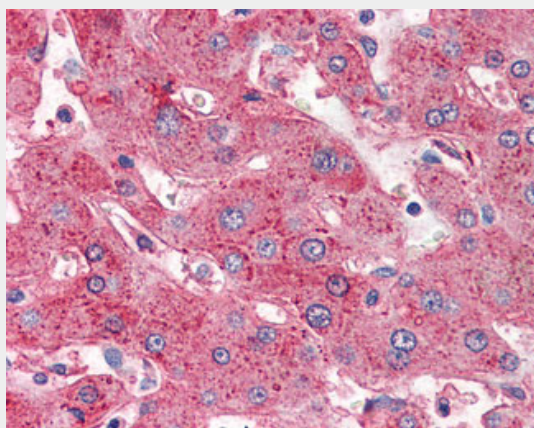
Synthesized mainly in liver and to a minor degree in intestine. Also found in the lung and spleen

APOC1 / Apolipoprotein C I Antibody - Protocols

Provided below are standard protocols that you may find useful for product applications.

- [Western Blot](#)
- [Blocking Peptides](#)
- [Dot Blot](#)
- [Immunohistochemistry](#)
- [Immunofluorescence](#)
- [Immunoprecipitation](#)
- [Flow Cytometry](#)
- [Cell Culture](#)

APOC1 / Apolipoprotein C I Antibody - Images



Anti-APOC1 / Apolipoprotein C I antibody IHC of human liver.

APOC1 / Apolipoprotein C I Antibody - Background

Inhibitor of lipoprotein binding to the low density lipoprotein (LDL) receptor, LDL receptor-related protein, and very low density lipoprotein (VLDL) receptor. Associates with high density lipoproteins (HDL) and the triacylglycerol-rich lipoproteins in the plasma and makes up about 10% of the protein of the VLDL and 2% of that of HDL. Appears to interfere directly with fatty acid uptake and is also the major plasma inhibitor of cholesteryl ester transfer protein (CETP). Binds free fatty acids and reduces their intracellular esterification. Modulates the interaction of APOE with beta-migrating VLDL and inhibits binding of beta-VLDL to the LDL receptor-related protein.

APOC1 / Apolipoprotein C I Antibody - References

Knott T.J., et al. Nucleic Acids Res. 12:3909-3915(1984).
Lauer S.J., et al. J. Biol. Chem. 263:7277-7286(1988).
Freitas E.M., et al. DNA Seq. 9:89-100(1998).
Nickerson D.A., et al. Submitted (SEP-2003) to the EMBL/GenBank/DDBJ databases.
Kallnine N., et al. Submitted (MAY-2003) to the EMBL/GenBank/DDBJ databases.