

APOA1 / Apolipoprotein A 1 Antibody (clone 057-10029)
Mouse Monoclonal Antibody
Catalog # ALS12634**Specification**

APOA1 / Apolipoprotein A 1 Antibody (clone 057-10029) - Product Information

Application	IHC
Primary Accession	P02647
Reactivity	Human
Host	Mouse
Clonality	Monoclonal
Calculated MW	31kDa KDa

APOA1 / Apolipoprotein A 1 Antibody (clone 057-10029) - Additional Information**Gene ID** 335**Other Names**

Apolipoprotein A-I, Apo-AI, ApoA-I, Apolipoprotein A1, Proapolipoprotein A-I, ProapoA-I, Truncated apolipoprotein A-I, Apolipoprotein A-I(1-242), APOA1

Target/Specificity

Recognizes Apolipoprotein A-I (Apo A-I). This antibody does not cross-react with Apo A-II or Apo B in competitive RIA.

Reconstitution & Storage

+4°C or -20°C, Avoid repeated freezing and thawing.

Precautions

APOA1 / Apolipoprotein A 1 Antibody (clone 057-10029) is for research use only and not for use in diagnostic or therapeutic procedures.

APOA1 / Apolipoprotein A 1 Antibody (clone 057-10029) - Protein Information**Name** APOA1 ([HGNC:600](#))**Function**

Participates in the reverse transport of cholesterol from tissues to the liver for excretion by promoting cholesterol efflux from tissues and by acting as a cofactor for the lecithin cholesterol acyltransferase (LCAT). As part of the SPAP complex, activates spermatozoa motility.

Cellular Location

Secreted.

Tissue Location

Major protein of plasma HDL, also found in chylomicrons. Synthesized in the liver and small intestine. The oxidized form at Met-110 and Met-136 is increased in individuals with increased risk for coronary artery disease, such as in carrier of the eNOSa/b genotype and exposure to cigarette

smoking. It is also present in increased levels in aortic lesions relative to native ApoA-I and increased levels are seen with increasing severity of disease

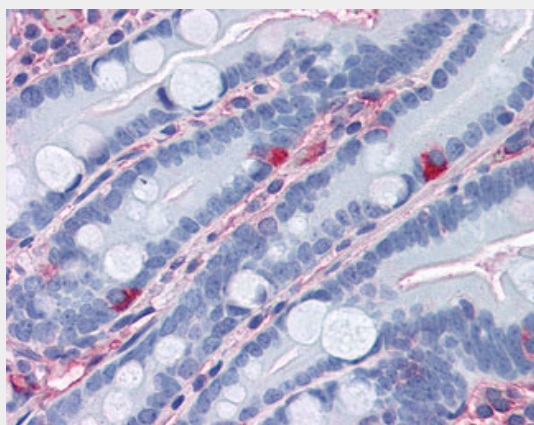
Volume

50 µl

APOA1 / Apolipoprotein A 1 Antibody (clone 057-10029) - Protocols

Provided below are standard protocols that you may find useful for product applications.

- [Western Blot](#)
- [Blocking Peptides](#)
- [Dot Blot](#)
- [Immunohistochemistry](#)
- [Immunofluorescence](#)
- [Immunoprecipitation](#)
- [Flow Cytometry](#)
- [Cell Culture](#)

APOA1 / Apolipoprotein A 1 Antibody (clone 057-10029) - Images

Anti-Apolipoprotein A I antibody IHC of human small intestine.

APOA1 / Apolipoprotein A 1 Antibody (clone 057-10029) - Background

Participates in the reverse transport of cholesterol from tissues to the liver for excretion by promoting cholesterol efflux from tissues and by acting as a cofactor for the lecithin cholesterol acyltransferase (LCAT). As part of the SPAP complex, activates spermatozoa motility.

APOA1 / Apolipoprotein A 1 Antibody (clone 057-10029) - References

Shoulders C.C., et al. Nucleic Acids Res. 11:2827-2837(1983).
Cheung P., et al. Nucleic Acids Res. 11:3703-3715(1983).
Karathanasis S.K., et al. Proc. Natl. Acad. Sci. U.S.A. 80:6147-6151(1983).
Seilhamer J.J., et al. DNA 3:309-317(1984).
Sharpe C.R., et al. Nucleic Acids Res. 12:3917-3932(1984).