

TLR3 Antibody (C-Terminus)
Rabbit Polyclonal Antibody
Catalog # ALS12684**Specification**

TLR3 Antibody (C-Terminus) - Product Information

Application	IF, IHC, WB, ICC
Primary Accession	O15455
Reactivity	Human, Mouse
Host	Rabbit
Clonality	Polyclonal
Calculated MW	104kDa KDa

TLR3 Antibody (C-Terminus) - Additional Information**Gene ID** 7098**Other Names**

Toll-like receptor 3, CD283, TLR3

Target/Specificity

A peptide corresponding to 15 amino acids between aa 751 and 851 of human TLR3.

Reconstitution & Storage

Short term 4°C, long term aliquot and store at -20°C, avoid freeze thaw cycles. Store undiluted.

Precautions

TLR3 Antibody (C-Terminus) is for research use only and not for use in diagnostic or therapeutic procedures.

TLR3 Antibody (C-Terminus) - Protein Information**Name** TLR3 ([HGNC:11849](#))**Function**

Key component of innate and adaptive immunity. TLRs (Toll-like receptors) control host immune response against pathogens through recognition of molecular patterns specific to microorganisms. TLR3 is a nucleotide-sensing TLR which is activated by double-stranded RNA, a sign of viral infection. Acts via the adapter TRIF/TICAM1, leading to NF-kappa-B activation, IRF3 nuclear translocation, cytokine secretion and the inflammatory response.

Cellular Location

Endoplasmic reticulum membrane; Single-pass type I membrane protein. Endosome membrane. Early endosome

Tissue Location

Expressed at high level in placenta and pancreas. Also detected in CD11c+ immature dendritic cells. Only expressed in dendritic cells and not in other leukocytes, including monocyte precursors.

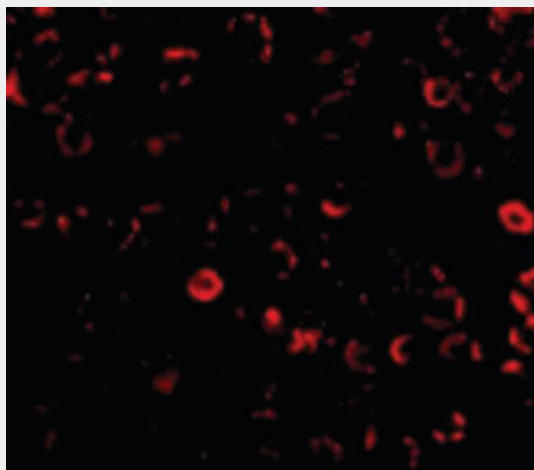
TLR3 is the TLR that is expressed most strongly in the brain, especially in astrocytes, glia, and neurons

TLR3 Antibody (C-Terminus) - Protocols

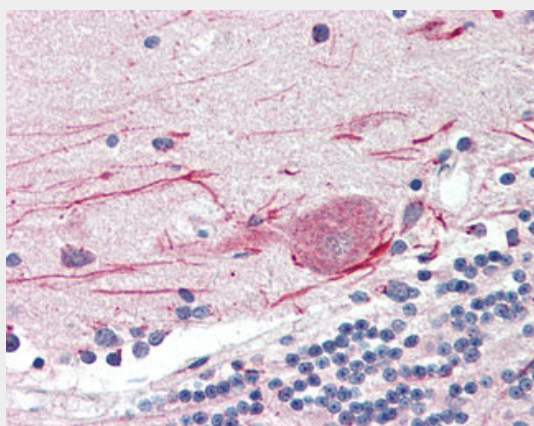
Provided below are standard protocols that you may find useful for product applications.

- [Western Blot](#)
- [Blocking Peptides](#)
- [Dot Blot](#)
- [Immunohistochemistry](#)
- [Immunofluorescence](#)
- [Immunoprecipitation](#)
- [Flow Cytometry](#)
- [Cell Culture](#)

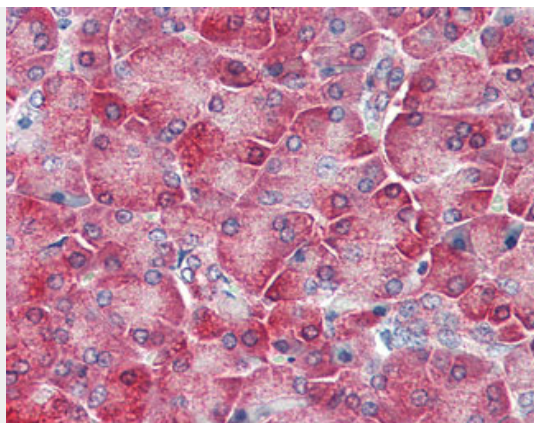
TLR3 Antibody (C-Terminus) - Images



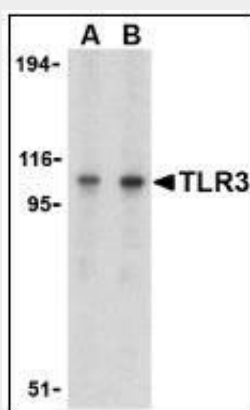
Immunofluorescence of TLR3 in E14 cells with TLR3 antibody at 10 ug/ml.



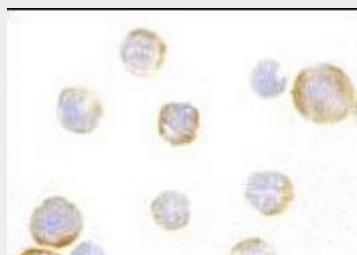
Anti-TLR3 antibody IHC of human brain, cerebellum.



Anti-TLR3 antibody IHC of human pancreas.



Western blot of TLR3 in Daudi cell lysate with TLR3 antibody at (A) 1 and (B) 2 ug/ml.



Immunocytochemistry of TLR3 in EL4 cells with TLR3 antibody at 1 ug/ml.

TLR3 Antibody (C-Terminus) - Background

Key component of innate and adaptive immunity. TLRs (Toll-like receptors) control host immune response against pathogens through recognition of molecular patterns specific to microorganisms. TLR3 is a nucleotide-sensing TLR which is activated by double-stranded RNA, a sign of viral infection. Acts via the adapter TRIF/TICAM1, leading to NF-kappa-B activation, IRF3 nuclear translocation, cytokine secretion and the inflammatory response.

TLR3 Antibody (C-Terminus) - References

- Rock F.L.,et al.Proc. Natl. Acad. Sci. U.S.A. 95:588-593(1998).
- Lafon M.,et al.J. Mol. Neurosci. 29:185-194(2006).
- Nakajima T.,et al.Immunogenetics 60:727-735(2008).
- Macquin C.,et al.Submitted (JAN-2006) to the EMBL/GenBank/DDBJ databases.
- Ota T.,et al.Nat. Genet. 36:40-45(2004).

