

**PEBP1 / RKIP Antibody (Internal)**  
**Goat Polyclonal Antibody**  
**Catalog # ALS12721****Specification**

---

**PEBP1 / RKIP Antibody (Internal) - Product Information**

Application	IHC
Primary Accession	<a href="#">P30086</a>
Reactivity	Human, Rabbit, Monkey, Pig, Bovine, Dog
Host	Goat
Clonality	Polyclonal
Calculated MW	21kDa KDa

**PEBP1 / RKIP Antibody (Internal) - Additional Information****Gene ID** 5037**Other Names**

Phosphatidylethanolamine-binding protein 1, PEBP-1, HCNPpp, Neuropolypeptide h3, Prostatic-binding protein, Raf kinase inhibitor protein, RKIP, Hippocampal cholinergic neurostimulating peptide, HCNP, PEBP1, PBP, PEBP

**Target/Specificity**

Human PEBP1.

**Reconstitution & Storage**

Store at -20°C. Minimize freezing and thawing.

**Precautions**

PEBP1 / RKIP Antibody (Internal) is for research use only and not for use in diagnostic or therapeutic procedures.

**PEBP1 / RKIP Antibody (Internal) - Protein Information****Name** PEBP1**Synonyms** PBP, PEBP**Function**

Binds ATP, opioids and phosphatidylethanolamine. Has lower affinity for phosphatidylinositol and phosphatidylcholine. Serine protease inhibitor which inhibits thrombin, neuropsin and chymotrypsin but not trypsin, tissue type plasminogen activator and elastase (By similarity). Inhibits the kinase activity of RAF1 by inhibiting its activation and by dissociating the RAF1/MEK complex and acting as a competitive inhibitor of MEK phosphorylation.

**Cellular Location**

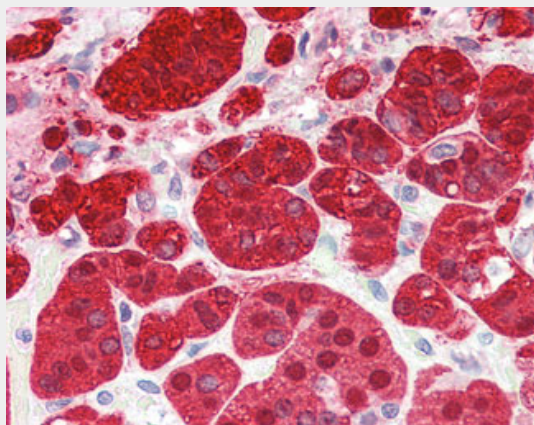
Cytoplasm.

## PEBP1 / RKIP Antibody (Internal) - Protocols

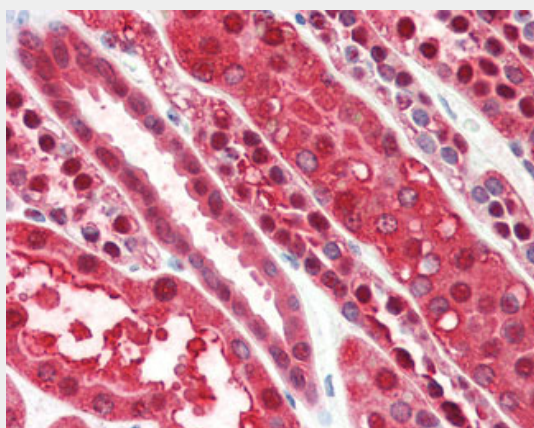
Provided below are standard protocols that you may find useful for product applications.

- [Western Blot](#)
- [Blocking Peptides](#)
- [Dot Blot](#)
- [Immunohistochemistry](#)
- [Immunofluorescence](#)
- [Immunoprecipitation](#)
- [Flow Cytometry](#)
- [Cell Culture](#)

## PEBP1 / RKIP Antibody (Internal) - Images



Anti-PEBP1 antibody IHC of human adrenal.



Anti-PEBP1 antibody IHC of human kidney.

## PEBP1 / RKIP Antibody (Internal) - Background

Binds ATP, opioids and phosphatidylethanolamine. Has lower affinity for phosphatidylinositol and phosphatidylcholine. Serine protease inhibitor which inhibits thrombin, neuropsin and chymotrypsin but not trypsin, tissue type plasminogen activator and elastase (By similarity). Inhibits the kinase activity of RAF1 by inhibiting its activation and by dissociating the RAF1/MEK complex and acting as a competitive inhibitor of MEK phosphorylation.

**PEBP1 / RKIP Antibody (Internal) - References**

- Hori N.,et al.Gene 140:293-294(1994).  
Tohdoh N.,et al.Brain Res. Mol. Brain Res. 30:381-384(1995).  
Hall L.,et al.Submitted (FEB-1995) to the EMBL/GenBank/DDBJ databases.  
Ota T.,et al.Nat. Genet. 36:40-45(2004).  
Mural R.J.,et al.Submitted (JUL-2005) to the EMBL/GenBank/DDBJ databases.