

EGR2 Antibody (Internal)
Goat Polyclonal Antibody
Catalog # ALS12729**Specification**

EGR2 Antibody (Internal) - Product Information

Application	WB, IHC
Primary Accession	P11161
Reactivity	Human, Rabbit, Monkey, Pig, Horse, Bovine, Dog
Host	Goat
Clonality	Polyclonal
Calculated MW	50kDa KDa

EGR2 Antibody (Internal) - Additional Information**Gene ID** 1959**Other Names**

E3 SUMO-protein ligase EGR2, 6.3.2.-, AT591, Early growth response protein 2, EGR-2, Zinc finger protein Krox-20, EGR2, KROX20

Target/Specificity

Human EGR2.

Reconstitution & Storage

Store at -20°C. Minimize freezing and thawing.

Precautions

EGR2 Antibody (Internal) is for research use only and not for use in diagnostic or therapeutic procedures.

EGR2 Antibody (Internal) - Protein Information**Name** EGR2**Synonyms** KROX20**Function**

Sequence-specific DNA-binding transcription factor (PubMed:17717711). Plays a role in hindbrain segmentation by regulating the expression of a subset of homeobox containing genes and in Schwann cell myelination by regulating the expression of genes involved in the formation and maintenance of myelin (By similarity). Binds to two EGR2- consensus sites EGR2A (5'-CTGTAGGAG-3') and EGR2B (5'-ATGTAGGTG-3') in the HOXB3 enhancer and promotes HOXB3 transcriptional activation (By similarity). Binds to specific DNA sites located in the promoter region of HOXA4, HOXB2 and ERBB2 (By similarity). Regulates hindbrain segmentation by controlling the expression of Hox genes, such as HOXA4, HOXB3 and HOXB2, and thereby specifying odd and

even rhombomeres (By similarity). Promotes the expression of HOXB3 in the rhombomere r5 in the hindbrain (By similarity). Regulates myelination in the peripheral nervous system after birth, possibly by regulating the expression of myelin proteins, such as MPZ, and by promoting the differentiation of Schwann cells (By similarity). Involved in the development of the jaw opener musculature, probably by playing a role in its innervation through trigeminal motor neurons (By similarity). May play a role in adipogenesis, possibly by regulating the expression of CEBPB (By similarity).

Cellular Location

Nucleus {ECO:0000250|UniProtKB:P08152}.

EGR2 Antibody (Internal) - Protocols

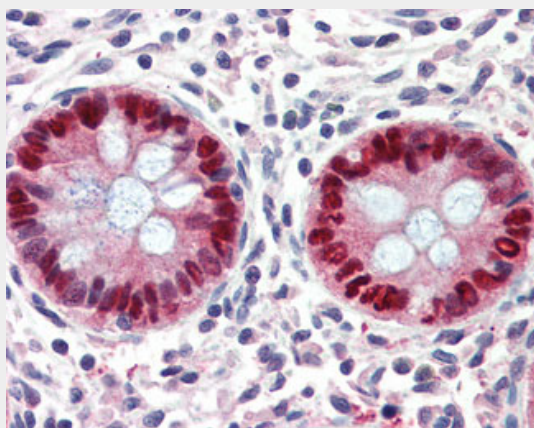
Provided below are standard protocols that you may find useful for product applications.

- [Western Blot](#)
- [Blocking Peptides](#)
- [Dot Blot](#)
- [Immunohistochemistry](#)
- [Immunofluorescence](#)
- [Immunoprecipitation](#)
- [Flow Cytometry](#)
- [Cell Culture](#)

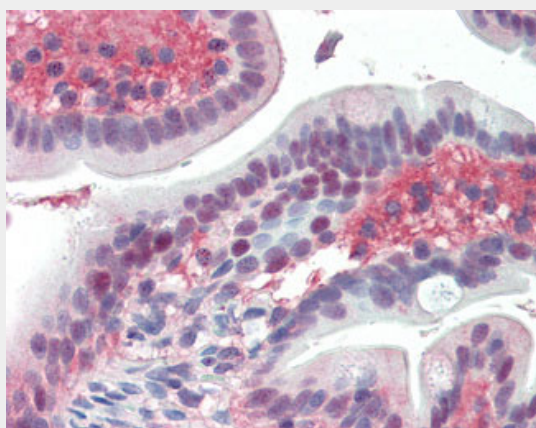
EGR2 Antibody (Internal) - Images



Antibody (0.03 ug/ml) staining of HepG2 cell lysate (35 ug protein in RIPA buffer).



Anti-EGR2 antibody IHC of human colon.



Anti-EGR2 antibody IHC of human small intestine.

EGR2 Antibody (Internal) - Background

Sequence-specific DNA-binding transcription factor. Binds to two specific DNA sites located in the promoter region of HOXA4.

EGR2 Antibody (Internal) - References

Joseph L.J.,et al.Proc. Natl. Acad. Sci. U.S.A. 85:7164-7168(1988).
Joseph L.J.,et al.Proc. Natl. Acad. Sci. U.S.A. 86:515-515(1989).
Warner L.E.,et al.Nat. Genet. 18:382-384(1998).
Ota T.,et al.Nat. Genet. 36:40-45(2004).
Bechtel S.,et al.BMC Genomics 8:399-399(2007).