

BRAP2 / IMP Antibody (N-Terminus)
Rabbit Polyclonal Antibody
Catalog # ALS12815**Specification**

BRAP2 / IMP Antibody (N-Terminus) - Product Information

Application	IHC
Primary Accession	Q7Z569
Reactivity	Human, Monkey
Host	Rabbit
Clonality	Polyclonal
Calculated MW	67kDa KDa

BRAP2 / IMP Antibody (N-Terminus) - Additional Information**Gene ID** 8315**Other Names**

BRCA1-associated protein, 6.3.2.-, BRAP2, Impedes mitogenic signal propagation, IMP, RING finger protein 52, Renal carcinoma antigen NY-REN-63, BRAP (http://www.genenames.org/cgi-bin/gene_symbol_report?hgnc_id=1099), RNF52

Target/Specificity

KLH conjugated synthetic peptide comprising amino acids 27 - 39 [AAGEMSDEEIKKT] of the human BRCA1 associated protein (BRAP) [N-terminus] protein.

Reconstitution & Storage

Long term: -20°C; Short term: +4°C. Avoid repeat freeze-thaw cycles.

Precautions

BRAP2 / IMP Antibody (N-Terminus) is for research use only and not for use in diagnostic or therapeutic procedures.

BRAP2 / IMP Antibody (N-Terminus) - Protein Information**Name** BRAP ([HGNC:1099](#))**Synonyms** RNF52**Function**

Negatively regulates MAP kinase activation by limiting the formation of Raf/MEK complexes probably by inactivation of the KSR1 scaffold protein. Also acts as a Ras responsive E3 ubiquitin ligase that, on activation of Ras, is modified by auto-polyubiquitination resulting in the release of inhibition of Raf/MEK complex formation. May also act as a cytoplasmic retention protein with a role in regulating nuclear transport.

Cellular Location

Cytoplasm.

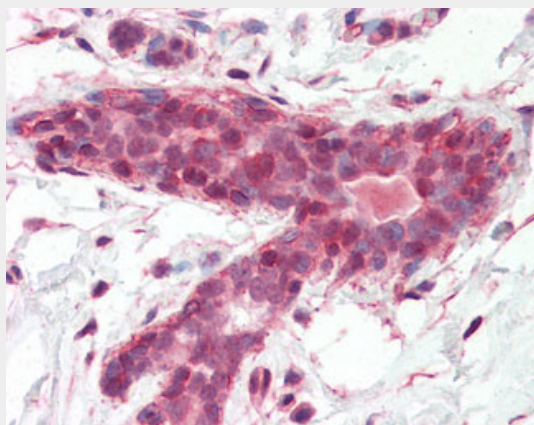
Tissue Location

Expressed in breast epithelial cell lines.

BRAP2 / IMP Antibody (N-Terminus) - Protocols

Provided below are standard protocols that you may find useful for product applications.

- [Western Blot](#)
- [Blocking Peptides](#)
- [Dot Blot](#)
- [Immunohistochemistry](#)
- [Immunofluorescence](#)
- [Immunoprecipitation](#)
- [Flow Cytometry](#)
- [Cell Culture](#)

BRAP2 / IMP Antibody (N-Terminus) - Images

Anti-BRAP antibody IHC of human breast.

BRAP2 / IMP Antibody (N-Terminus) - Background

Negatively regulates MAP kinase activation by limiting the formation of Raf/MEK complexes probably by inactivation of the KSR1 scaffold protein. Also acts as a Ras responsive E3 ubiquitin ligase that, on activation of Ras, is modified by auto- polyubiquitination resulting in the release of inhibition of Raf/MEK complex formation. May also act as a cytoplasmic retention protein with a role in regulating nuclear transport.

BRAP2 / IMP Antibody (N-Terminus) - References

- Li S.,et al.J. Biol. Chem. 273:6183-6189(1998).
Matheny S.A.,et al.Nature 427:256-260(2004).
Ota T.,et al.Nat. Genet. 36:40-45(2004).
Scherer S.E.,et al.Nature 440:346-351(2006).
Mural R.J.,et al.Submitted (JUL-2005) to the EMBL/GenBank/DDBJ databases.