

SELP / P-Selectin / CD62P Antibody (clone Psel.KO.2.5)
Mouse Monoclonal Antibody
Catalog # ALS12883**Specification**

SELP / P-Selectin / CD62P Antibody (clone Psel.KO.2.5) - Product Information

Application	IHC
Primary Accession	P16109
Reactivity	Human, Pig
Host	Mouse
Clonality	Monoclonal
Calculated MW	91kDa KDa

SELP / P-Selectin / CD62P Antibody (clone Psel.KO.2.5) - Additional Information**Gene ID** 6403**Other Names**

P-selectin, CD62 antigen-like family member P, Granule membrane protein 140, GMP-140, Leukocyte-endothelial cell adhesion molecule 3, LECAM3, Platelet activation dependent granule-external membrane protein, PADGEM, CD62P, SELP, GMRP, GRMP

Target/Specificity

Recognizes the CD62P cell surface antigen, a 140kD glycoprotein also known as P-selectin. CD62P is expressed by activated platelets and endothelial cells, and plays an important role in adhesive processes between leucocytes and endothelial cells. To ...

Reconstitution & Storage

+4°C or -20°C, Avoid repeated freezing and thawing.

Precautions

SELP / P-Selectin / CD62P Antibody (clone Psel.KO.2.5) is for research use only and not for use in diagnostic or therapeutic procedures.

SELP / P-Selectin / CD62P Antibody (clone Psel.KO.2.5) - Protein Information**Name** SELP**Synonyms** GMRP, GRMP**Function**

Ca(2+)-dependent receptor for myeloid cells that binds to carbohydrates on neutrophils and monocytes. Mediates the interaction of activated endothelial cells or platelets with leukocytes. The ligand recognized is sialyl-Lewis X. Mediates rapid rolling of leukocyte rolling over vascular surfaces during the initial steps in inflammation through interaction with SELPLG.

Cellular Location

Cell membrane; Single-pass type I membrane protein

Tissue Location

Stored in the alpha-granules of platelets and Weibel-Palade bodies of endothelial cells. Upon cell activation by agonists, P-selectin is transported rapidly to the cell surface

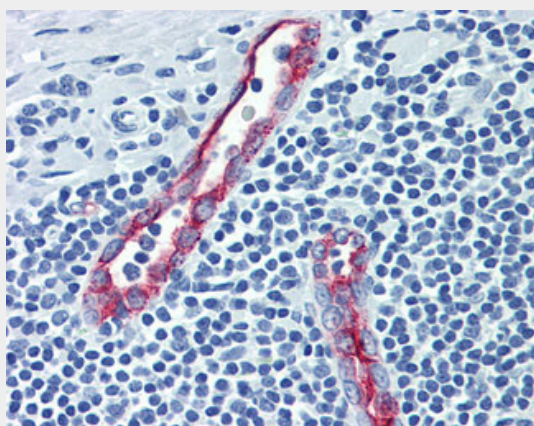
Volume

250 µl

SELP / P-Selectin / CD62P Antibody (clone Psel.KO.2.5) - Protocols

Provided below are standard protocols that you may find useful for product applications.

- [Western Blot](#)
- [Blocking Peptides](#)
- [Dot Blot](#)
- [Immunohistochemistry](#)
- [Immunofluorescence](#)
- [Immunoprecipitation](#)
- [Flow Cytometry](#)
- [Cell Culture](#)

SELP / P-Selectin / CD62P Antibody (clone Psel.KO.2.5) - Images

Anti-CD62P antibody IHC of human tonsil.

SELP / P-Selectin / CD62P Antibody (clone Psel.KO.2.5) - Background

Ca(2+)-dependent receptor for myeloid cells that binds to carbohydrates on neutrophils and monocytes. Mediates the interaction of activated endothelial cells or platelets with leukocytes. The ligand recognized is sialyl-Lewis X. Mediates rapid rolling of leukocyte rolling over vascular surfaces during the initial steps in inflammation through interaction with PSGL1.

SELP / P-Selectin / CD62P Antibody (clone Psel.KO.2.5) - References

Johnston G.I., et al. Cell 56:1033-1044(1989).
Gregory S.G., et al. Nature 441:315-321(2006).
Mural R.J., et al. Submitted (JUL-2005) to the EMBL/GenBank/DDBJ databases.
Fujimoto T., et al. J. Biol. Chem. 268:11394-11400(1993).
Sako D., et al. Cell 83:323-331(1995).