

PILRB Antibody
Goat Polyclonal Antibody
Catalog # ALS12919**Specification**

PILRB Antibody - Product Information

Application	IHC
Primary Accession	O9UKJ0
Reactivity	Human
Host	Goat
Clonality	Polyclonal
Calculated MW	26kDa KDa

PILRB Antibody - Additional Information**Gene ID** 29990**Other Names**

Paired immunoglobulin-like type 2 receptor beta, Activating receptor PILR-beta, Cell surface receptor FDFACT, PILRB, FDFACT

Target/Specificity

Human PILRB. Both variants represent identical proteins (NP_038468.3; NP_839956.1). This antibody is expected to recognize isoform a only (NP_038468.3; NP_839956.1).

Reconstitution & Storage

Store at -20°C. Minimize freezing and thawing.

Precautions

PILRB Antibody is for research use only and not for use in diagnostic or therapeutic procedures.

PILRB Antibody - Protein Information**Name** PILRB**Synonyms** FDFACT**Function**

Paired receptors consist of highly related activating and inhibitory receptors and are widely involved in the regulation of the immune system. PILRB is thought to act as a cellular signaling activating receptor that associates with ITAM-bearing adapter molecules on the cell surface.

Cellular Location

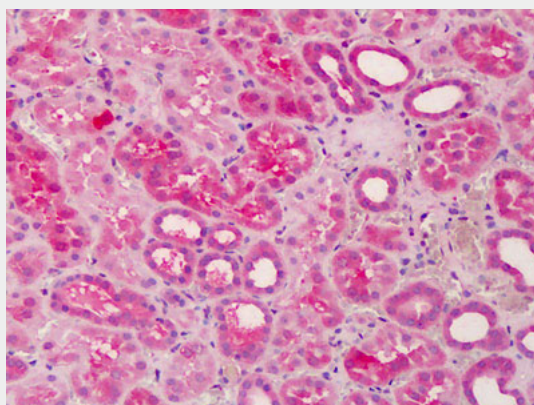
Membrane; Single-pass type I membrane protein

PILRB Antibody - Protocols

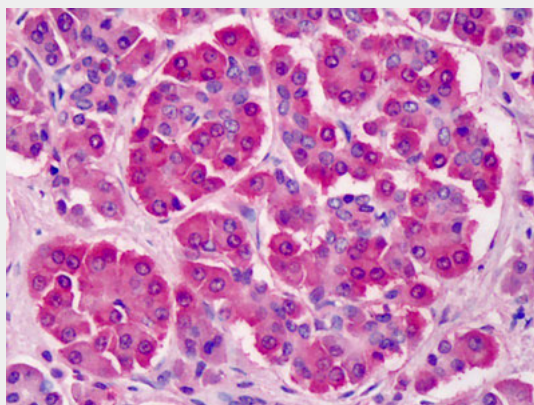
Provided below are standard protocols that you may find useful for product applications.

- [Western Blot](#)
- [Blocking Peptides](#)
- [Dot Blot](#)
- [Immunohistochemistry](#)
- [Immunofluorescence](#)
- [Immunoprecipitation](#)
- [Flow Cytometry](#)
- [Cell Culture](#)

PILRB Antibody - Images



Anti-PILRB antibody IHC of human kidney.



Anti-PILRB antibody IHC of human pancreas.

PILRB Antibody - Background

Paired receptors consist of highly related activating and inhibitory receptors and are widely involved in the regulation of the immune system. PILRB is thought to act as a cellular signaling activating receptor that associates with ITAM-bearing adapter molecules on the cell surface.

PILRB Antibody - References

Mousseau D.D.,et al.J. Biol. Chem. 275:4467-4474(2000).
Bates E.E.,et al.Submitted (APR-2000) to the EMBL/GenBank/DDBJ databases.
Wan D.,et al.Proc. Natl. Acad. Sci. U.S.A. 101:15724-15729(2004).
Bechtel S.,et al.BMC Genomics 8:399-399(2007).