

LIME1 / LIME Antibody (aa141-295)
Rabbit Polyclonal Antibody
Catalog # ALS12935**Specification**

LIME1 / LIME Antibody (aa141-295) - Product Information

Application	IHC
Primary Accession	Q9H400
Reactivity	Human
Host	Rabbit
Clonality	Polyclonal
Calculated MW	31kDa KDa

LIME1 / LIME Antibody (aa141-295) - Additional Information**Gene ID** 54923**Other Names**

Lck-interacting transmembrane adapter 1, Lck-interacting membrane protein, Lck-interacting molecule, LIME1, LIME

Target/Specificity

Reacts with the cytoplasmic domain of LIME, a 31 kD Lck-interacting transmembrane adaptor expressed by T cells.

Reconstitution & Storage

Short term 4°C, long term aliquot and store at -20°C, avoid freeze thaw cycles.

Precautions

LIME1 / LIME Antibody (aa141-295) is for research use only and not for use in diagnostic or therapeutic procedures.

LIME1 / LIME Antibody (aa141-295) - Protein Information**Name** LIME1**Synonyms** LIME**Function**

Involved in BCR (B-cell antigen receptor)-mediated signaling in B-cells and TCR (T-cell antigen receptor)-mediated T-cell signaling in T-cells. In absence of TCR signaling, may be involved in CD4-mediated inhibition of T-cell activation. Couples activation of these receptors and their associated kinases with distal intracellular events such as calcium mobilization or MAPK activation through the recruitment of PLCG2, GRB2, GRAP2, and other signaling molecules.

Cellular Location

Cell membrane; Single-pass type III membrane protein Note=Present in lipid rafts. Recruited to the immunological synapse upon conjugation of T-cell with antigen-presenting cell

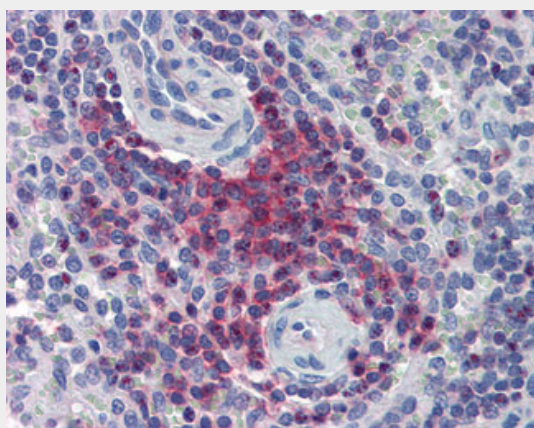
Tissue Location

Expressed in peripheral blood lymphocytes, lymphoid tissues, and liver. Present in T-cells and plasma cells, and in various hematopoietic cell lines (at protein level)

LIME1 / LIME Antibody (aa141-295) - Protocols

Provided below are standard protocols that you may find useful for product applications.

- [Western Blot](#)
- [Blocking Peptides](#)
- [Dot Blot](#)
- [Immunohistochemistry](#)
- [Immunofluorescence](#)
- [Immunoprecipitation](#)
- [Flow Cytometry](#)
- [Cell Culture](#)

LIME1 / LIME Antibody (aa141-295) - Images

Anti-LIME1 / LIME antibody IHC of human spleen.

LIME1 / LIME Antibody (aa141-295) - Background

Involved in BCR (B-cell antigen receptor)-mediated signaling in B-cells and TCR (T-cell antigen receptor)-mediated T-cell signaling in T-cells. In absence of TCR signaling, may be involved in CD4-mediated inhibition of T-cell activation. Couples activation of these receptors and their associated kinases with distal intracellular events such as calcium mobilization or MAPK activation through the recruitment of PLCG2, GRB2, GRAP2, and other signaling molecules.

LIME1 / LIME Antibody (aa141-295) - References

Brdickova N., et al. J. Exp. Med. 198:1453-1462(2003).
Hur E.M., et al. J. Exp. Med. 198:1463-1473(2003).
Wan D., et al. Proc. Natl. Acad. Sci. U.S.A. 101:15724-15729(2004).
Ota T., et al. Nat. Genet. 36:40-45(2004).
Deloukas P., et al. Nature 414:865-871(2001).