

**PPP1R12A / MYPT1 Antibody**  
**Goat Polyclonal Antibody**  
**Catalog # ALS12990****Specification**

---

**PPP1R12A / MYPT1 Antibody - Product Information**

Application	IHC
Primary Accession	<a href="#">O14974</a>
Reactivity	Human, Mouse, Rat, Monkey, Horse, Bovine, Dog
Host	Goat
Clonality	Polyclonal
Calculated MW	115kDa KDa

**PPP1R12A / MYPT1 Antibody - Additional Information****Gene ID** 4659**Other Names**

Protein phosphatase 1 regulatory subunit 12A, Myosin phosphatase-targeting subunit 1, Myosin phosphatase target subunit 1, Protein phosphatase myosin-binding subunit, PPP1R12A, MBS, MYPT1

**Target/Specificity**

Human PPP1R12A / MYPT1.

**Reconstitution & Storage**

Store at -20°C. Minimize freezing and thawing.

**Precautions**

PPP1R12A / MYPT1 Antibody is for research use only and not for use in diagnostic or therapeutic procedures.

**PPP1R12A / MYPT1 Antibody - Protein Information****Name** PPP1R12A ([HGNC:7618](#))**Function**

Key regulator of protein phosphatase 1C (PPP1C). Mediates binding to myosin. As part of the PPP1C complex, involved in dephosphorylation of PLK1. Capable of inhibiting HIF1AN-dependent suppression of HIF1A activity.

**Cellular Location**

Cytoplasm. Cytoplasm, cytoskeleton, stress fiber. Note=Also along actomyosin filaments

**Tissue Location**

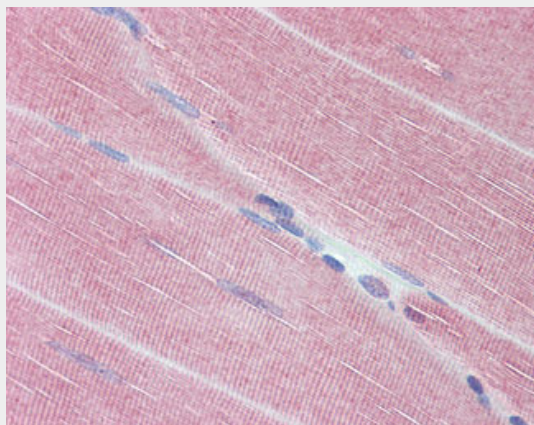
Expressed in striated muscles, specifically in type 2a fibers (at protein level).

## PPP1R12A / MYPT1 Antibody - Protocols

Provided below are standard protocols that you may find useful for product applications.

- [Western Blot](#)
- [Blocking Peptides](#)
- [Dot Blot](#)
- [Immunohistochemistry](#)
- [Immunofluorescence](#)
- [Immunoprecipitation](#)
- [Flow Cytometry](#)
- [Cell Culture](#)

## PPP1R12A / MYPT1 Antibody - Images



Anti-PPP1R12A / MYPT1 antibody IHC of human skeletal muscle.

## PPP1R12A / MYPT1 Antibody - Background

Key regulator of protein phosphatase 1C (PPP1C). Mediates binding to myosin. As part of the PPP1C complex, involved in dephosphorylation of PLK1. Capable of inhibiting HIF1AN- dependent suppression of HIF1A activity.

## PPP1R12A / MYPT1 Antibody - References

Takahashi N.,et al.Genomics 44:150-152(1997).  
Guo J.H.,et al.Submitted (DEC-2001) to the EMBL/GenBank/DDBJ databases.  
Xia D.,et al.Submitted (SEP-2003) to the EMBL/GenBank/DDBJ databases.  
Ota T.,et al.Nat. Genet. 36:40-45(2004).  
Scherer S.E.,et al.Nature 440:346-351(2006).