

**METTL7B Antibody (C-Terminus)**  
**Rabbit Polyclonal Antibody**  
**Catalog # ALS13006****Specification**

---

**METTL7B Antibody (C-Terminus) - Product Information**

Application	WB
Primary Accession	<a href="#">Q6UX53</a>
Reactivity	Human, Mouse, Rat
Host	Rabbit
Clonality	Polyclonal
Calculated MW	28kDa KDa

**METTL7B Antibody (C-Terminus) - Additional Information****Gene ID** 196410**Other Names**

Methyltransferase-like protein 7B, 2.1.1.-, METTL7B

**Reconstitution & Storage**

Short term 4°C, long term aliquot and store at -20°C, avoid freeze thaw cycles. Store undiluted.

**Precautions**

METTL7B Antibody (C-Terminus) is for research use only and not for use in diagnostic or therapeutic procedures.

**METTL7B Antibody (C-Terminus) - Protein Information****Name** TMT1B {ECO:0000303|PubMed:37137720, ECO:0000312|HGNC:HGNC:28276}**Function**

Thiol S-methyltransferase that catalyzes the transfer of a methyl group from S-adenosyl-L-methionine to alkyl and phenolic thiol- containing acceptor substrates. Together with TMT1B accounts for most of S-thiol methylation activity in the endoplasmic reticulum of hepatocytes. Selectively methylates S-centered nucleophiles from metabolites such as hydrogen sulfide and dithiothreitol.

**Cellular Location**

Endoplasmic reticulum membrane {ECO:0000250|UniProtKB:Q562C4}; Peripheral membrane protein {ECO:0000250|UniProtKB:Q562C4}. Lipid droplet {ECO:0000250|UniProtKB:Q562C4}. Microsome. Cytoplasm, cytosol. Note=Highly concentrated in the perinuclear area of the endoplasmic reticulum (ER) and surrounding lipid droplets. May be associated with the specific regions of the LR that form lipid droplets and targeted to the initial deposits of lipids where the lipid droplets form. {ECO:0000250|UniProtKB:Q562C4}

**Tissue Location**

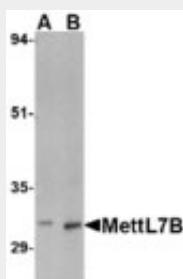
Expressed in the liver.

### **METTL7B Antibody (C-Terminus) - Protocols**

Provided below are standard protocols that you may find useful for product applications.

- [Western Blot](#)
- [Blocking Peptides](#)
- [Dot Blot](#)
- [Immunohistochemistry](#)
- [Immunofluorescence](#)
- [Immunoprecipitation](#)
- [Flow Cytometry](#)
- [Cell Culture](#)

### **METTL7B Antibody (C-Terminus) - Images**



Western blot of MettlL7B in rat spleen tissue lysate with MettlL7B antibody at (A) 2 and (B) 4 ug/ml.

### **METTL7B Antibody (C-Terminus) - Background**

Probable methyltransferase.

### **METTL7B Antibody (C-Terminus) - References**

Clark H.F., et al. Genome Res. 13:2265-2270(2003).  
Ota T., et al. Nat. Genet. 36:40-45(2004).