

**JPH3 Antibody (C-Terminus)**  
**Rabbit Polyclonal Antibody**  
**Catalog # ALS13024****Specification**

---

**JPH3 Antibody (C-Terminus) - Product Information**

Application	IF, WB
Primary Accession	<a href="#">Q8WXH2</a>
Reactivity	Human, Mouse, Rat
Host	Rabbit
Clonality	Polyclonal
Calculated MW	81kDa KDa

**JPH3 Antibody (C-Terminus) - Additional Information****Gene ID** 57338**Other Names**

Junctophilin-3, JP-3, Junctophilin type 3, Trinucleotide repeat-containing gene 22 protein, JPH3, JP3, TNRC22

**Target/Specificity**

At least two isoforms of JPH3 are known to exist.

**Reconstitution & Storage**

Short term 4°C, long term aliquot and store at -20°C, avoid freeze thaw cycles. Store undiluted.

**Precautions**

JPH3 Antibody (C-Terminus) is for research use only and not for use in diagnostic or therapeutic procedures.

**JPH3 Antibody (C-Terminus) - Protein Information****Name** JPH3**Synonyms** JP3, TNRC22**Function**

Junctophilins contribute to the formation of junctional membrane complexes (JMCs) which link the plasma membrane with the endoplasmic or sarcoplasmic reticulum in excitable cells. Provides a structural foundation for functional cross-talk between the cell surface and intracellular calcium release channels. JPH3 is brain- specific and appears to have an active role in certain neurons involved in motor coordination and memory.

**Cellular Location**

Cell membrane; Peripheral membrane protein. Endoplasmic reticulum membrane; Single-pass type IV membrane protein. Note=Localized predominantly on the plasma membrane. The transmembrane domain is anchored in endoplasmic reticulum membrane, while the N-terminal

part associates with the plasma membrane (By similarity).

#### **Tissue Location**

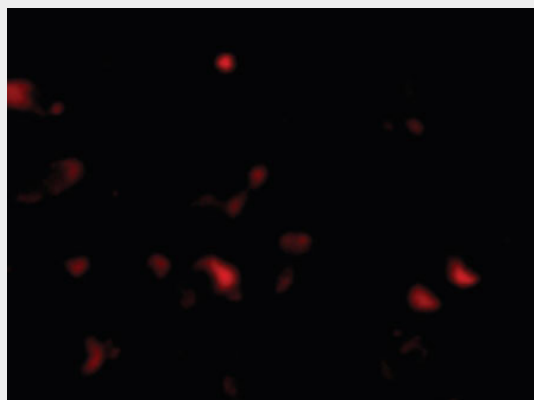
Specifically expressed in brain.

#### **JPH3 Antibody (C-Terminus) - Protocols**

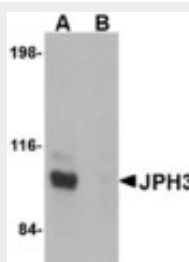
Provided below are standard protocols that you may find useful for product applications.

- [Western Blot](#)
- [Blocking Peptides](#)
- [Dot Blot](#)
- [Immunohistochemistry](#)
- [Immunofluorescence](#)
- [Immunoprecipitation](#)
- [Flow Cytometry](#)
- [Cell Culture](#)

#### **JPH3 Antibody (C-Terminus) - Images**



Immunofluorescence of JPH3 in Human Brain cells with JPH3 antibody at 20 ug/ml.



Western blot of JPH3 in Daudi cell lysate with JPH3 antibody at 1 ug/ml in (A) the absence and...

#### **JPH3 Antibody (C-Terminus) - Background**

Junctophilins contribute to the formation of junctional membrane complexes (JMCs) which link the plasma membrane with the endoplasmic or sarcoplasmic reticulum in excitable cells. Provides a structural foundation for functional cross-talk between the cell surface and intracellular calcium release channels. JPH3 is brain- specific and appears to have an active role in certain neurons involved in motor coordination and memory.

#### **JPH3 Antibody (C-Terminus) - References**

Nishi M.,et al.Biochem. Biophys. Res. Commun. 273:920-927(2000).  
Mural R.J.,et al.Submitted (SEP-2005) to the EMBL/GenBank/DDBJ databases.  
Holmes S.E.,et al.Nat. Genet. 29:377-378(2001).  
Stevanin G.,et al.Neurology 58:965-967(2002).  
Walker R.H.,et al.Neurology 61:1002-1004(2003).