

JPH3 Antibody (Internal)
Rabbit Polyclonal Antibody
Catalog # ALS13025**Specification**

JPH3 Antibody (Internal) - Product Information

Application	IF, IHC
Primary Accession	Q8WXH2
Reactivity	Human, Mouse, Rat
Host	Rabbit
Clonality	Polyclonal
Calculated MW	81kDa KDa

JPH3 Antibody (Internal) - Additional Information**Gene ID** 57338**Other Names**

Junctophilin-3, JP-3, Junctophilin type 3, Trinucleotide repeat-containing gene 22 protein, JPH3, JP3, TNRC22

Target/Specificity

At least two isoforms of JPH3 are known to exist.

Reconstitution & Storage

Short term 4°C, long term aliquot and store at -20°C, avoid freeze thaw cycles. Store undiluted.

Precautions

JPH3 Antibody (Internal) is for research use only and not for use in diagnostic or therapeutic procedures.

JPH3 Antibody (Internal) - Protein Information**Name** JPH3**Synonyms** JP3, TNRC22**Function**

Junctophilins contribute to the formation of junctional membrane complexes (JMCs) which link the plasma membrane with the endoplasmic or sarcoplasmic reticulum in excitable cells. Provides a structural foundation for functional cross-talk between the cell surface and intracellular calcium release channels. JPH3 is brain- specific and appears to have an active role in certain neurons involved in motor coordination and memory.

Cellular Location

Cell membrane; Peripheral membrane protein. Endoplasmic reticulum membrane; Single-pass type IV membrane protein. Note=Localized predominantly on the plasma membrane. The transmembrane domain is anchored in endoplasmic reticulum membrane, while the N-terminal

part associates with the plasma membrane (By similarity).

Tissue Location

Specifically expressed in brain.

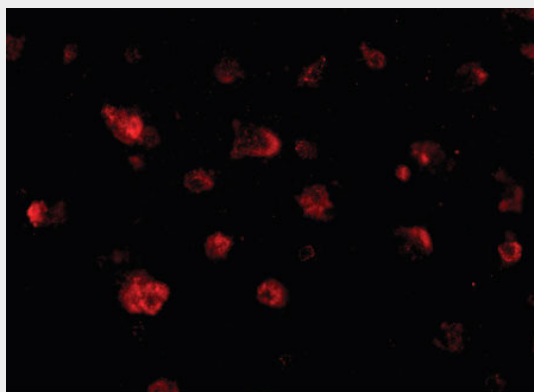
Volume

50 μ l

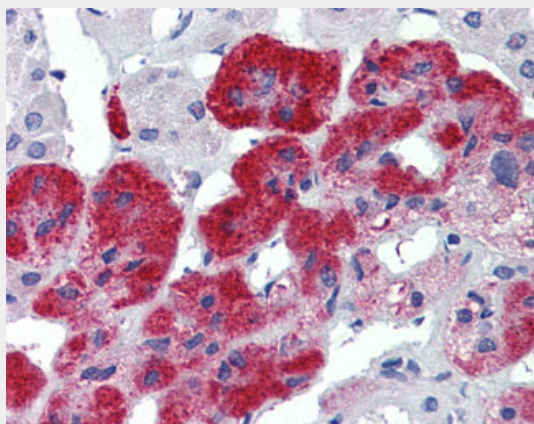
JPH3 Antibody (Internal) - Protocols

Provided below are standard protocols that you may find useful for product applications.

- [Western Blot](#)
- [Blocking Peptides](#)
- [Dot Blot](#)
- [Immunohistochemistry](#)
- [Immunofluorescence](#)
- [Immunoprecipitation](#)
- [Flow Cytometry](#)
- [Cell Culture](#)

JPH3 Antibody (Internal) - Images

Immunofluorescence of JPH3 in human brain tissue with JPH3 antibody at 20 ug/ml.



Anti-JPH3 antibody IHC of human adrenal.

JPH3 Antibody (Internal) - Background

Junctophilins contribute to the formation of junctional membrane complexes (JMCs) which link the plasma membrane with the endoplasmic or sarcoplasmic reticulum in excitable cells. Provides a structural foundation for functional cross-talk between the cell surface and intracellular calcium release channels. JPH3 is brain- specific and appears to have an active role in certain neurons involved in motor coordination and memory.

JPH3 Antibody (Internal) - References

Nishi M.,et al.Biochem. Biophys. Res. Commun. 273:920-927(2000).
Mural R.J.,et al.Submitted (SEP-2005) to the EMBL/GenBank/DDBJ databases.
Holmes S.E.,et al.Nat. Genet. 29:377-378(2001).
Stevanin G.,et al.Neurology 58:965-967(2002).
Walker R.H.,et al.Neurology 61:1002-1004(2003).