

EWSR1 / EWS Antibody (Internal)
Goat Polyclonal Antibody
Catalog # ALS13106**Specification**

EWSR1 / EWS Antibody (Internal) - Product Information

Application	WB, IHC
Primary Accession	Q01844
Reactivity	Human, Mouse, Rat, Hamster, Monkey, Pig, Bovine, Dog
Host	Goat
Clonality	Polyclonal
Calculated MW	68kDa KDa

EWSR1 / EWS Antibody (Internal) - Additional Information**Gene ID** 2130**Other Names**

RNA-binding protein EWS, EWS oncogene, Ewing sarcoma breakpoint region 1 protein, EWSR1, EWS

Target/Specificity

Human EWSR1. This antibody is expected to recognize all five reported isoforms (NP_053733.2; NP_005234.1; NP_001156757.1; NP_001156758.1; NP_001156759.1).

Reconstitution & Storage

Store at -20°C. Minimize freezing and thawing.

Precautions

EWSR1 / EWS Antibody (Internal) is for research use only and not for use in diagnostic or therapeutic procedures.

EWSR1 / EWS Antibody (Internal) - Protein Information**Name** EWSR1**Synonyms** EWS**Function**

Might normally function as a transcriptional repressor. EWS- fusion-proteins (EFPS) may play a role in the tumorigenic process. They may disturb gene expression by mimicking, or interfering with the normal function of CTD-POLII within the transcription initiation complex. They may also contribute to an aberrant activation of the fusion protein target genes.

Cellular Location

Nucleus. Cytoplasm. Cell membrane. Note=Relocates from cytoplasm to ribosomes upon PTK2B/FAK2 activation

Tissue Location

Ubiquitous.

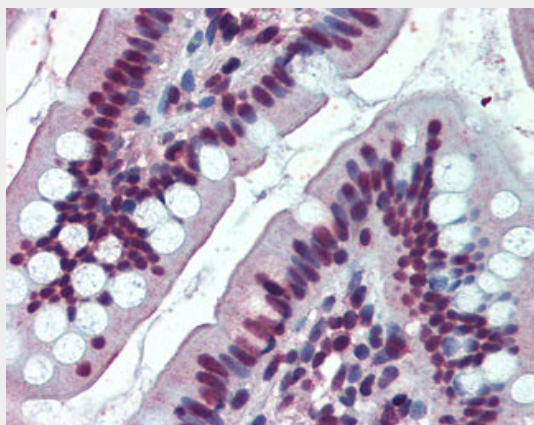
EWSR1 / EWS Antibody (Internal) - Protocols

Provided below are standard protocols that you may find useful for product applications.

- [Western Blot](#)
- [Blocking Peptides](#)
- [Dot Blot](#)
- [Immunohistochemistry](#)
- [Immunofluorescence](#)
- [Immunoprecipitation](#)
- [Flow Cytometry](#)
- [Cell Culture](#)

EWSR1 / EWS Antibody (Internal) - Images

Antibody (0.1 ug/ml) staining of nuclear HeLa lysate (35 ug protein in RIPA buffer).



Anti-EWSR1 antibody IHC of human small intestine.

EWSR1 / EWS Antibody (Internal) - Background

Might normally function as a transcriptional repressor. EWS-fusion-proteins (EFPS) may play a role in the tumorigenic process. They may disturb gene expression by mimicking, or interfering with the normal function of CTD-POLII within the transcription initiation complex. They may also contribute to an aberrant activation of the fusion protein target genes.

EWSR1 / EWS Antibody (Internal) - References

Delattre O.,et al.Nature 359:162-165(1992).
Plougastel B.,et al.Genomics 18:609-615(1993).
Zucman-Rossi J.,et al.Submitted (MAY-1998) to the EMBL/GenBank/DDBJ databases.
Collins J.E.,et al.Genome Biol. 5:R84.1-R84.11(2004).
Ota T.,et al.Nat. Genet. 36:40-45(2004).