

CD9 Antibody (clone SN4/C3-3A2)
Mouse Monoclonal Antibody
Catalog # ALS13116**Specification**

CD9 Antibody (clone SN4/C3-3A2) - Product Information

Application	IHC
Primary Accession	P21926
Reactivity	Human
Host	Mouse
Clonality	Monoclonal
Calculated MW	25kDa KDa

CD9 Antibody (clone SN4/C3-3A2) - Additional Information**Gene ID** 928**Other Names**

CD9 antigen, 5H9 antigen, Cell growth-inhibiting gene 2 protein, Leukocyte antigen MIC3, Motility-related protein, MRP-1, Tetraspanin-29, Tspan-29, p24, CD9, CD9, MIC3, TSPAN29

Reconstitution & Storage

Store at 4°C, avoid repeated freeze thaw cycles.

Precautions

CD9 Antibody (clone SN4/C3-3A2) is for research use only and not for use in diagnostic or therapeutic procedures.

CD9 Antibody (clone SN4/C3-3A2) - Protein Information**Name** CD9 {ECO:0000303|PubMed:1840589, ECO:0000312|HGNC:HGNC:1709}**Function**

Integral membrane protein associated with integrins, which regulates different processes, such as sperm-egg fusion, platelet activation and aggregation, and cell adhesion (PubMed:8478605, PubMed:14575715, PubMed:18541721). Present at the cell surface of oocytes and plays a key role in sperm-egg fusion, possibly by organizing multiprotein complexes and the morphology of the membrane required for the fusion (By similarity). In myoblasts, associates with CD81 and PTGFRN and inhibits myotube fusion during muscle regeneration (By similarity). In macrophages, associates with CD81 and beta-1 and beta-2 integrins, and prevents macrophage fusion into multinucleated giant cells specialized in ingesting complement-opsonized large particles (PubMed:12796480). Also prevents the fusion between mononuclear cell progenitors into osteoclasts in charge of bone resorption (By similarity). Acts as a receptor for PSG17 (By similarity). Involved in platelet activation and aggregation (PubMed:18541721).

target="_blank">18541721). Regulates paranodal junction formation (By similarity). Involved in cell adhesion, cell motility and tumor metastasis (PubMed:8478605, PubMed:7511626).

Cellular Location

Cell membrane; Multi-pass membrane protein. Membrane; Multi-pass membrane protein. Secreted, extracellular exosome {ECO:0000250|UniProtKB:P40240}. Note=Present at the cell surface of oocytes. Accumulates in the adhesion area between the sperm and egg following interaction between IZUMO1 and its receptor IZUMO1R/JUNO {ECO:0000250|UniProtKB:P40240}

Tissue Location

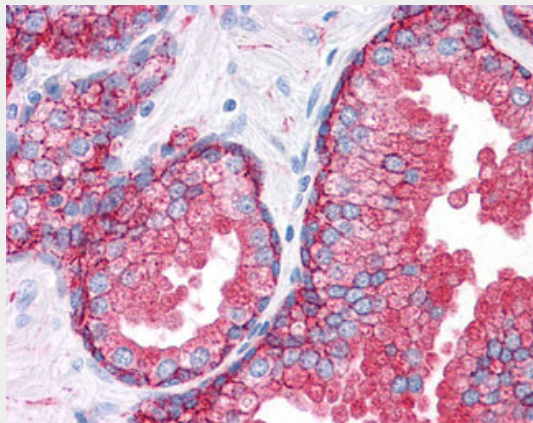
Detected in platelets (at protein level) (PubMed:19640571). Expressed by a variety of hematopoietic and epithelial cells (PubMed:19640571).

CD9 Antibody (clone SN4/C3-3A2) - Protocols

Provided below are standard protocols that you may find useful for product applications.

- [Western Blot](#)
- [Blocking Peptides](#)
- [Dot Blot](#)
- [Immunohistochemistry](#)
- [Immunofluorescence](#)
- [Immunoprecipitation](#)
- [Flow Cytometry](#)
- [Cell Culture](#)

CD9 Antibody (clone SN4/C3-3A2) - Images



Anti-CD9 antibody IHC of human prostate.

CD9 Antibody (clone SN4/C3-3A2) - Background

Involved in platelet activation and aggregation. Regulates paranodal junction formation. Involved in cell adhesion, cell motility and tumor metastasis. Required for sperm-egg fusion.

CD9 Antibody (clone SN4/C3-3A2) - References

Boucheix C., et al.J. Biol. Chem. 266:117-122(1991).
Lanza F., et al.J. Biol. Chem. 266:10638-10645(1991).

Miyake M.,et al.J. Exp. Med. 174:1347-1354(1991).
Rubinstein E.,et al.Genomics 16:132-138(1993).
Kobayashi H.,et al.Clin. Exp. Immunol. 137:101-108(2004).