

**LAT Antibody (clone LAT.10-17 (10-17))**  
**Mouse Monoclonal Antibody**  
**Catalog # ALS13124****Specification**

---

**LAT Antibody (clone LAT.10-17 (10-17)) - Product Information**

Application	WB, IHC
Primary Accession	<a href="#">O43561</a>
Reactivity	Human
Host	Mouse
Clonality	Monoclonal
Calculated MW	28kDa KDa

**LAT Antibody (clone LAT.10-17 (10-17)) - Additional Information****Gene ID** 27040**Other Names**

Linker for activation of T-cells family member 1, 36 kDa phospho-tyrosine adapter protein, pp36, p36-38, LAT

**Reconstitution & Storage**

Store at 4°C, avoid repeated freeze thaw cycles.

**Precautions**

LAT Antibody (clone LAT.10-17 (10-17)) is for research use only and not for use in diagnostic or therapeutic procedures.

**LAT Antibody (clone LAT.10-17 (10-17)) - Protein Information****Name** LAT**Function**

Required for TCR (T-cell antigen receptor)- and pre-TCR- mediated signaling, both in mature T-cells and during their development (PubMed:<a href="http://www.uniprot.org/citations/25907557" target="\_blank">25907557</a>, PubMed:<a href="http://www.uniprot.org/citations/23514740" target="\_blank">23514740</a>). Involved in FCGR3 (low affinity immunoglobulin gamma Fc region receptor III)-mediated signaling in natural killer cells and FCER1 (high affinity immunoglobulin epsilon receptor)-mediated signaling in mast cells. Couples activation of these receptors and their associated kinases with distal intracellular events such as mobilization of intracellular calcium stores, PKC activation, MAPK activation or cytoskeletal reorganization through the recruitment of PLCG1, GRB2, GRAP2, and other signaling molecules.

**Cellular Location**

Cell membrane; Single-pass type III membrane protein. Note=Present in lipid rafts

**Tissue Location**

Expressed in thymus, T-cells, NK cells, mast cells and, at lower levels, in spleen. Present in T-cells

but not B-cells (at protein level).

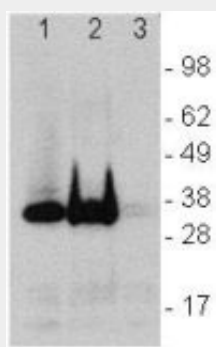
**Volume**

50  $\mu$ l

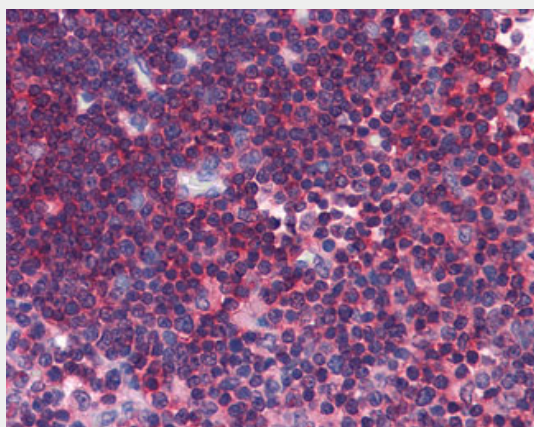
**LAT Antibody (clone LAT.10-17 (10-17)) - Protocols**

Provided below are standard protocols that you may find useful for product applications.

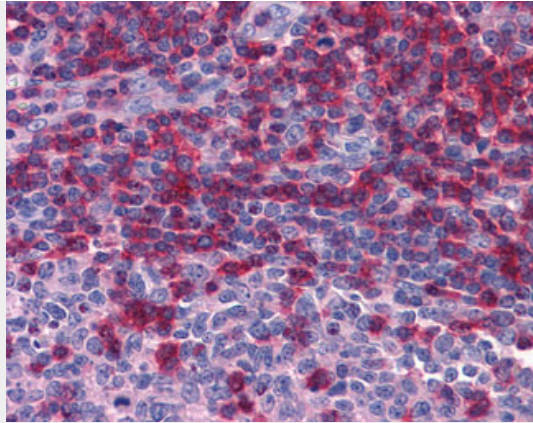
- [Western Blot](#)
- [Blocking Peptides](#)
- [Dot Blot](#)
- [Immunohistochemistry](#)
- [Immunofluorescence](#)
- [Immunoprecipitation](#)
- [Flow Cytometry](#)
- [Cell Culture](#)

**LAT Antibody (clone LAT.10-17 (10-17)) - Images**

Western Blot of  $10^6$  normal peripheral human blood cells (lane 1), Jurkat (lane 2), and C57BL/6...



Anti-LAT antibody IHC of human thymus.



Anti-LAT antibody IHC of human tonsil.

#### **LAT Antibody (clone LAT.10-17 (10-17)) - Background**

Required for TCR (T-cell antigen receptor)- and pre-TCR- mediated signaling, both in mature T-cells and during their development. Involved in FCGR3 (low affinity immunoglobulin gamma Fc region receptor III)-mediated signaling in natural killer cells and FCER1 (high affinity immunoglobulin epsilon receptor)-mediated signaling in mast cells. Couples activation of these receptors and their associated kinases with distal intracellular events such as mobilization of intracellular calcium stores, PKC activation, MAPK activation or cytoskeletal reorganization through the recruitment of PLCG1, GRB2, GRAP2, and other signaling molecules.

#### **LAT Antibody (clone LAT.10-17 (10-17)) - References**

- Zhang W.,et al.Cell 92:83-92(1998).
- Weber J.R.,et al.J. Exp. Med. 187:1157-1161(1998).
- Muschen M.,et al.Submitted (JUL-2009) to the EMBL/GenBank/DDBJ databases.
- Martin J.,et al.Nature 432:988-994(2004).
- Mural R.J.,et al.Submitted (JUL-2005) to the EMBL/GenBank/DDBJ databases.