

**BUB1B / BubR1 Antibody (clone 2G5)**  
**Mouse Monoclonal Antibody**  
**Catalog # ALS13281****Specification**

---

**BUB1B / BubR1 Antibody (clone 2G5) - Product Information**

Application	WB, IHC
Primary Accession	<a href="#">O60566</a>
Reactivity	Human
Host	Mouse
Clonality	Monoclonal
Calculated MW	120kDa KDa

**BUB1B / BubR1 Antibody (clone 2G5) - Additional Information****Gene ID** 701**Other Names**

Mitotic checkpoint serine/threonine-protein kinase BUB1 beta, 2.7.11.1, MAD3/BUB1-related protein kinase, hBUBR1, Mitotic checkpoint kinase MAD3L, Protein SSK1, BUB1B, BUBR1, MAD3L, SSK1

**Reconstitution & Storage**

Store at -20°C. Aliquot to avoid freeze/thaw cycles.

**Precautions**

BUB1B / BubR1 Antibody (clone 2G5) is for research use only and not for use in diagnostic or therapeutic procedures.

**BUB1B / BubR1 Antibody (clone 2G5) - Protein Information****Name** BUB1B**Synonyms** BUBR1, MAD3L, SSK1**Function**

Essential component of the mitotic checkpoint. Required for normal mitosis progression. The mitotic checkpoint delays anaphase until all chromosomes are properly attached to the mitotic spindle. One of its checkpoint functions is to inhibit the activity of the anaphase-promoting complex/cyclosome (APC/C) by blocking the binding of CDC20 to APC/C, independently of its kinase activity. The other is to monitor kinetochore activities that depend on the kinetochore motor CENPE. Required for kinetochore localization of CENPE. Negatively regulates PLK1 activity in interphase cells and suppresses centrosome amplification. Also implicated in triggering apoptosis in polyploid cells that exit aberrantly from mitotic arrest. May play a role for tumor suppression.

**Cellular Location**

Cytoplasm. Nucleus. Chromosome, centromere, kinetochore. Cytoplasm, cytoskeleton, microtubule organizing center, centrosome. Note=Cytoplasmic in interphase cells. Associates with

the kinetochores in early prophase. Kinetochore localization requires BUB1, PLK1 and KNL1

#### **Tissue Location**

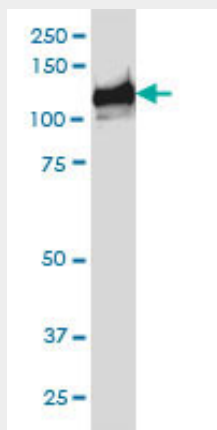
Highly expressed in thymus followed by spleen. Preferentially expressed in tissues with a high mitotic index

#### **BUB1B / BubR1 Antibody (clone 2G5) - Protocols**

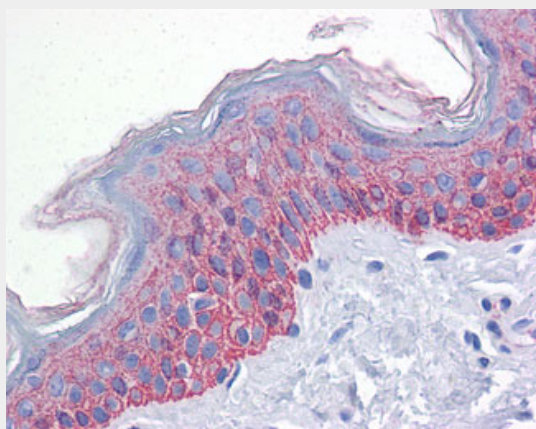
Provided below are standard protocols that you may find useful for product applications.

- [Western Blot](#)
- [Blocking Peptides](#)
- [Dot Blot](#)
- [Immunohistochemistry](#)
- [Immunofluorescence](#)
- [Immunoprecipitation](#)
- [Flow Cytometry](#)
- [Cell Culture](#)

#### **BUB1B / BubR1 Antibody (clone 2G5) - Images**



BUB1B monoclonal antibody (M02), clone 2G5 Western blot of BUB1B expression in HeLa NE.



Anti-BUB1B / BubR1 antibody IHC of human skin.

#### **BUB1B / BubR1 Antibody (clone 2G5) - Background**

Essential component of the mitotic checkpoint. Required for normal mitosis progression. The mitotic checkpoint delays anaphase until all chromosomes are properly attached to the mitotic spindle. One of its checkpoint functions is to inhibit the activity of the anaphase-promoting complex/cyclosome (APC/C) by blocking the binding of CDC20 to APC/C, independently of its kinase activity. The other is to monitor kinetochore activities that depend on the kinetochore motor CENPE. Required for kinetochore localization of CENPE. Negatively regulates PLK1 activity in interphase cells and suppresses centrosome amplification. Also implicated in triggering apoptosis in polyploid cells that exit aberrantly from mitotic arrest. May play a role for tumor suppression.

**BUB1B / BubR1 Antibody (clone 2G5) - References**

Donadelli R.,et al.Biochem. Biophys. Res. Commun. 246:881-887(1998).  
Taylor S.S.,et al.J. Cell Biol. 142:1-11(1998).  
Chan G.K.T.,et al.J. Cell Biol. 143:49-63(1998).  
Cahill D.P.,et al.Nature 392:300-303(1998).  
Davenport J.W.,et al.Genomics 55:113-117(1999).