

CDH1 / E Cadherin Antibody (clone 3F4)
Mouse Monoclonal Antibody
Catalog # ALS13288**Specification**

CDH1 / E Cadherin Antibody (clone 3F4) - Product Information

Application	WB, IHC
Primary Accession	P12830
Reactivity	Human
Host	Mouse
Clonality	Monoclonal
Calculated MW	97kDa KDa

CDH1 / E Cadherin Antibody (clone 3F4) - Additional Information**Gene ID** 999**Other Names**

Cadherin-1, CAM 120/80, Epithelial cadherin, E-cadherin, Uvomorulin, CD324, E-Cad/CTF1, E-Cad/CTF2, E-Cad/CTF3, CDH1, CDHE, UVO

Reconstitution & Storage

Store at -20°C. Aliquot to avoid freeze/thaw cycles.

Precautions

CDH1 / E Cadherin Antibody (clone 3F4) is for research use only and not for use in diagnostic or therapeutic procedures.

CDH1 / E Cadherin Antibody (clone 3F4) - Protein Information**Name** CDH1**Synonyms** CDHE, UVO**Function**

Cadherins are calcium-dependent cell adhesion proteins (PubMed:11976333). They preferentially interact with themselves in a homophilic manner in connecting cells; cadherins may thus contribute to the sorting of heterogeneous cell types. CDH1 is involved in mechanisms regulating cell-cell adhesions, mobility and proliferation of epithelial cells (PubMed:11976333). Has a potent invasive suppressor role. It is a ligand for integrin alpha-E/beta-7.

Cellular Location

Cell junction, adherens junction. Cell membrane; Single-pass type I membrane protein. Endosome. Golgi apparatus, trans-Golgi network. Note=Colocalizes with DLGAP5 at sites of cell-cell contact in intestinal epithelial cells. Anchored to actin microfilaments through association with alpha-, beta- and gamma-catenin. Sequential proteolysis induced by apoptosis or calcium influx, results in

translocation from sites of cell-cell contact to the cytoplasm Colocalizes with RAB11A endosomes during its transport from the Golgi apparatus to the plasma membrane

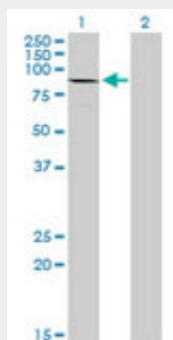
Tissue Location

Non-neural epithelial tissues.

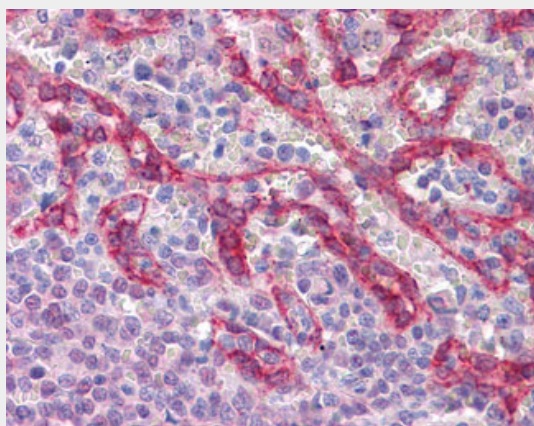
CDH1 / E Cadherin Antibody (clone 3F4) - Protocols

Provided below are standard protocols that you may find useful for product applications.

- [Western Blot](#)
- [Blocking Peptides](#)
- [Dot Blot](#)
- [Immunohistochemistry](#)
- [Immunofluorescence](#)
- [Immunoprecipitation](#)
- [Flow Cytometry](#)
- [Cell Culture](#)

CDH1 / E Cadherin Antibody (clone 3F4) - Images

Western blot of CDH1 expression in transfected 293T cell line by CDH1 monoclonal antibody, clone...



Anti-E Cadherin antibody IHC of human, spleen.

CDH1 / E Cadherin Antibody (clone 3F4) - Background

Cadherins are calcium-dependent cell adhesion proteins. They preferentially interact with themselves in a homophilic manner in connecting cells; cadherins may thus contribute to the

sorting of heterogeneous cell types. CDH1 is involved in mechanisms regulating cell-cell adhesions, mobility and proliferation of epithelial cells. Has a potent invasive suppressor role. It is a ligand for integrin alpha-E/beta-7.

CDH1 / E Cadherin Antibody (clone 3F4) - References

Bussemakers M.J.G.,et al.Mol. Biol. Rep. 17:123-128(1993).
Oda T.,et al.Proc. Natl. Acad. Sci. U.S.A. 91:1858-1862(1994).
Rimm D.L.,et al.Biochem. Biophys. Res. Commun. 200:1754-1761(1994).
Ito K.,et al.Oncogene 18:7080-7090(1999).
Shibamoto S.,et al.Submitted (MAR-1999) to the EMBL/GenBank/DDBJ databases.