

CSE1L Antibody (clone 3F8)
Mouse Monoclonal Antibody
Catalog # ALS13295**Specification**

CSE1L Antibody (clone 3F8) - Product Information

| | |
|-------------------|------------------------|
| Application | WB, IF, IHC |
| Primary Accession | P55060 |
| Reactivity | Human |
| Host | Mouse |
| Clonality | Monoclonal |
| Calculated MW | 110kDa KDa |

CSE1L Antibody (clone 3F8) - Additional Information**Gene ID** 1434**Other Names**

Exportin-2, Exp2, Cellular apoptosis susceptibility protein, Chromosome segregation 1-like protein, Importin-alpha re-exporter, CSE1L, CAS, XPO2

Reconstitution & Storage

Store at -20°C. Aliquot to avoid freeze/thaw cycles.

Precautions

CSE1L Antibody (clone 3F8) is for research use only and not for use in diagnostic or therapeutic procedures.

CSE1L Antibody (clone 3F8) - Protein Information**Name** CSE1L**Synonyms** CAS {ECO:0000303|PubMed:7479798}, XPO2**Function**

Export receptor for importin-alpha. Mediates importin-alpha re-export from the nucleus to the cytoplasm after import substrates (cargos) have been released into the nucleoplasm. In the nucleus binds cooperatively to importin-alpha and to the GTPase Ran in its active GTP-bound form. Docking of this trimeric complex to the nuclear pore complex (NPC) is mediated through binding to nucleoporins. Upon transit of a nuclear export complex into the cytoplasm, disassembling of the complex and hydrolysis of Ran-GTP to Ran-GDP (induced by RANBP1 and RANGAP1, respectively) cause release of the importin-alpha from the export receptor. CSE1L/XPO2 then return to the nuclear compartment and mediate another round of transport. The directionality of nuclear export is thought to be conferred by an asymmetric distribution of the GTP- and GDP-bound forms of Ran between the cytoplasm and nucleus.

Cellular Location

Cytoplasm. Nucleus. Note=Shuttles between the nucleus and the cytoplasm.

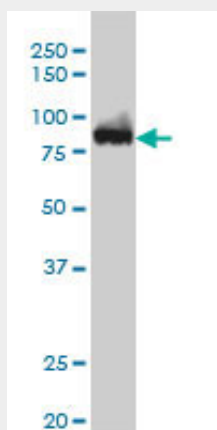
Tissue Location

Detected in brain, placenta, ovary, testis and trachea (at protein level) (PubMed:10331944). Widely expressed (PubMed:10331944). Highly expressed in testis and in proliferating cells (PubMed:7479798, PubMed:10331944).

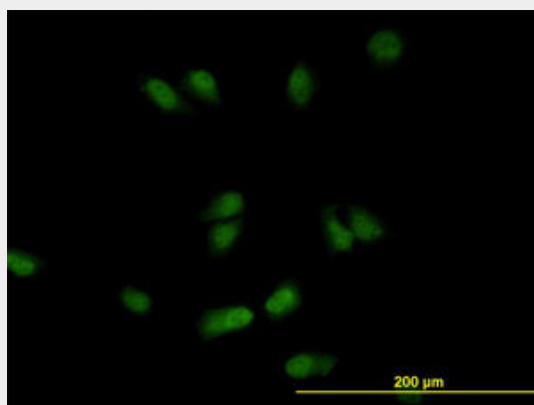
CSE1L Antibody (clone 3F8) - Protocols

Provided below are standard protocols that you may find useful for product applications.

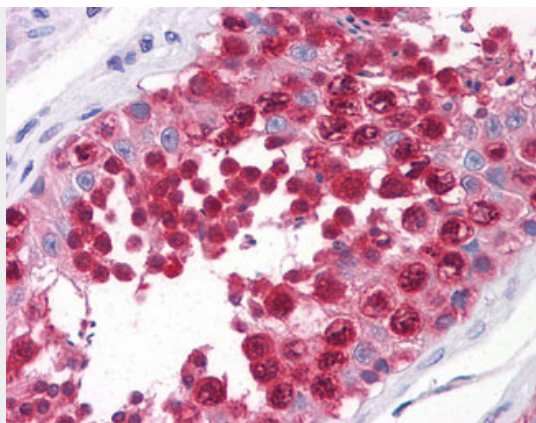
- [Western Blot](#)
- [Blocking Peptides](#)
- [Dot Blot](#)
- [Immunohistochemistry](#)
- [Immunofluorescence](#)
- [Immunoprecipitation](#)
- [Flow Cytometry](#)
- [Cell Culture](#)

CSE1L Antibody (clone 3F8) - Images

CSE1L monoclonal antibody, clone 3F8 Western blot of CSE1L expression in K-562.



Immunofluorescence of monoclonal antibody to CSE1L on HeLa cell (antibody concentration 10 ug/ml).



Anti-CSE1L antibody IHC of human testis.

CSE1L Antibody (clone 3F8) - Background

Export receptor for importin- α . Mediates importin- α re-export from the nucleus to the cytoplasm after import substrates (cargos) have been released into the nucleoplasm. In the nucleus binds cooperatively to importin- α and to the GTPase Ran in its active GTP-bound form. Docking of this trimeric complex to the nuclear pore complex (NPC) is mediated through binding to nucleoporins. Upon transit of a nuclear export complex into the cytoplasm, disassembling of the complex and hydrolysis of Ran-GTP to Ran-GDP (induced by RANBP1 and RANGAP1, respectively) cause release of the importin- α from the export receptor. CSE1L/XPO2 then return to the nuclear compartment and mediate another round of transport. The directionality of nuclear export is thought to be conferred by an asymmetric distribution of the GTP- and GDP-bound forms of Ran between the cytoplasm and nucleus.

CSE1L Antibody (clone 3F8) - References

Brinkmann U., et al. Proc. Natl. Acad. Sci. U.S.A. 92:10427-10431(1995).
Brinkmann U., et al. Genomics 58:41-49(1999).
Jiang M.C., et al. Mol. Cell Biol. Res. Commun. 4:353-358(2001).
Ota T., et al. Nat. Genet. 36:40-45(2004).
Deloukas P., et al. Nature 414:865-871(2001).