

**ENO1 / Alpha Enolase Antibody (clone 8G8)**  
**Mouse Monoclonal Antibody**  
**Catalog # ALS13306****Specification**

---

**ENO1 / Alpha Enolase Antibody (clone 8G8) - Product Information**

Application	WB, IF, IHC
Primary Accession	<a href="#">P06733</a>
Reactivity	Human
Host	Mouse
Clonality	Monoclonal
Calculated MW	47kDa KDa

**ENO1 / Alpha Enolase Antibody (clone 8G8) - Additional Information****Gene ID** 2023**Other Names**

Alpha-enolase, 4.2.1.11, 2-phospho-D-glycerate hydro-lyase, C-myc promoter-binding protein, Enolase 1, MBP-1, MPB-1, Non-neural enolase, NNE, Phosphopyruvate hydratase, Plasminogen-binding protein, ENO1, ENO1L1, MBPB1, MPB1

**Reconstitution & Storage**

Store at -20°C. Aliquot to avoid freeze/thaw cycles.

**Precautions**

ENO1 / Alpha Enolase Antibody (clone 8G8) is for research use only and not for use in diagnostic or therapeutic procedures.

**ENO1 / Alpha Enolase Antibody (clone 8G8) - Protein Information****Name** ENO1**Synonyms** ENO1L1, MBPB1, MPB1**Function**

Glycolytic enzyme that catalyzes the conversion of 2-phosphoglycerate to phosphoenolpyruvate (PubMed: [29775581](http://www.uniprot.org/citations/29775581)), PubMed: [1369209](http://www.uniprot.org/citations/1369209)). In addition to glycolysis, involved in various processes such as growth control, hypoxia tolerance and allergic responses (PubMed: [2005901](http://www.uniprot.org/citations/2005901), PubMed: [10802057](http://www.uniprot.org/citations/10802057), PubMed: [12666133](http://www.uniprot.org/citations/12666133), PubMed: [29775581](http://www.uniprot.org/citations/29775581)). May also function in the intravascular and pericellular fibrinolytic system due to its ability to serve as a receptor and activator of plasminogen on the cell surface of several cell-types such as leukocytes and neurons (PubMed: [12666133](http://www.uniprot.org/citations/12666133)). Stimulates

immunoglobulin production (PubMed:<a href="http://www.uniprot.org/citations/1369209" target="\_blank">1369209</a>).

#### **Cellular Location**

Cytoplasm. Cell membrane. Cytoplasm, myofibril, sarcomere, M line. Note=Can translocate to the plasma membrane in either the homodimeric (alpha/alpha) or heterodimeric (alpha/gamma) form. ENO1 is localized to the M line

#### **Tissue Location**

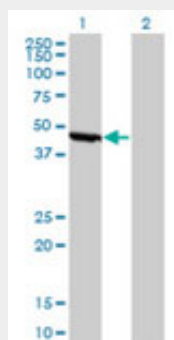
The alpha/alpha homodimer is expressed in embryo and in most adult tissues. The alpha/beta heterodimer and the beta/beta homodimer are found in striated muscle, and the alpha/gamma heterodimer and the gamma/gamma homodimer in neurons

### **ENO1 / Alpha Enolase Antibody (clone 8G8) - Protocols**

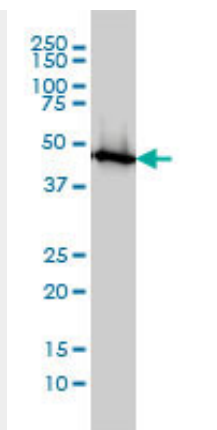
Provided below are standard protocols that you may find useful for product applications.

- [Western Blot](#)
- [Blocking Peptides](#)
- [Dot Blot](#)
- [Immunohistochemistry](#)
- [Immunofluorescence](#)
- [Immunoprecipitation](#)
- [Flow Cytometry](#)
- [Cell Culture](#)

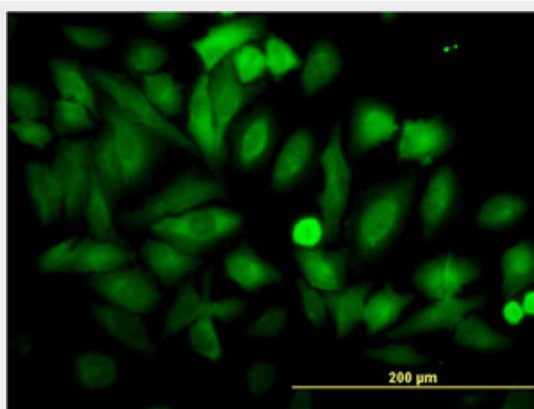
### **ENO1 / Alpha Enolase Antibody (clone 8G8) - Images**



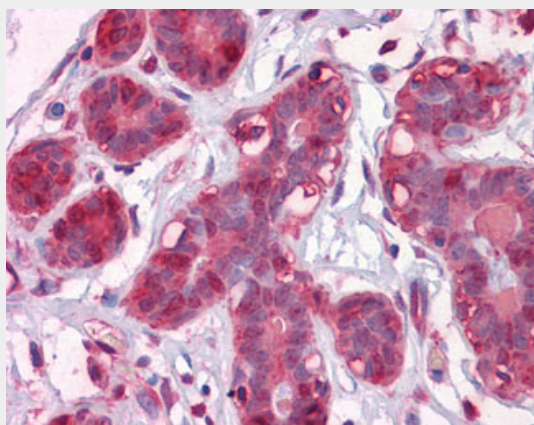
Western blot of ENO1 expression in transfected 293T cell line by ENO1 monoclonal antibody clone 8G8.



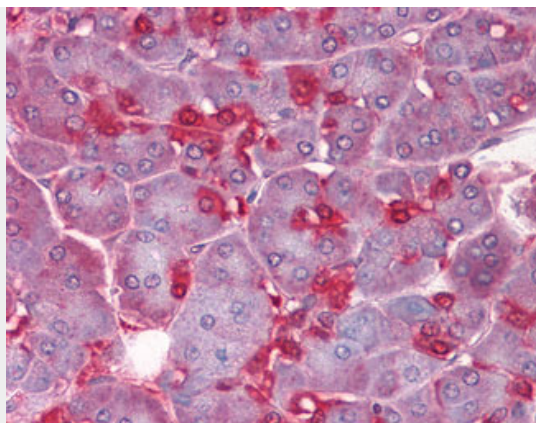
ENO1 monoclonal antibody clone 8G8 Western blot of ENO1 expression in MCF-7.



Immunofluorescence of monoclonal antibody to ENO1 on HeLa cell (antibody concentration 10 ug/ml).



Anti-ENO1 antibody IHC of human breast.



Anti-ENO1 antibody IHC of human pancreas.

### **ENO1 / Alpha Enolase Antibody (clone 8G8) - Background**

Multifunctional enzyme that, as well as its role in glycolysis, plays a part in various processes such as growth control, hypoxia tolerance and allergic responses. May also function in the intravascular and pericellular fibrinolytic system due to its ability to serve as a receptor and activator of plasminogen on the cell surface of several cell-types such as leukocytes and neurons. Stimulates immunoglobulin production.

### **ENO1 / Alpha Enolase Antibody (clone 8G8) - References**

- Giallongo A., et al. Proc. Natl. Acad. Sci. U.S.A. 83:6741-6745(1986).  
Giallongo A., et al. Eur. J. Biochem. 190:567-573(1990).  
Ray R., et al. Mol. Cell. Biol. 11:2154-2161(1991).  
Walter M., et al. J. Autoimmun. 8:931-945(1995).  
Kalnine N., et al. Submitted (MAY-2003) to the EMBL/GenBank/DDBJ databases.