

SORBS1 / Ponsin Antibody (Internal)
Goat Polyclonal Antibody
Catalog # ALS13333**Specification**

SORBS1 / Ponsin Antibody (Internal) - Product Information

Application	IHC
Primary Accession	Q9BX66
Reactivity	Human
Host	Goat
Clonality	Polyclonal
Calculated MW	143kDa KDa

SORBS1 / Ponsin Antibody (Internal) - Additional Information**Gene ID** 10580**Other Names**

Sorbin and SH3 domain-containing protein 1, Ponsin, SH3 domain protein 5, SH3P12, c-Cbl-associated protein, CAP, SORBS1 (HGNC:14565)

Target/Specificity

Human SORBS1. This antibody is expected to recognise all reported isoforms (NP_006425.2 and NP_056200.1 and NP_001030126.1 and NP_001030127.1 and NP_001030128.1 and NP_079267.1 and NP_001030129.1)

Reconstitution & Storage

Store at -20°C. Minimize freezing and thawing.

Precautions

SORBS1 / Ponsin Antibody (Internal) is for research use only and not for use in diagnostic or therapeutic procedures.

SORBS1 / Ponsin Antibody (Internal) - Protein Information**Name** SORBS1 ([HGNC:14565](#))**Function**

Plays a role in tyrosine phosphorylation of CBL by linking CBL to the insulin receptor. Required for insulin-stimulated glucose transport. Involved in formation of actin stress fibers and focal adhesions (By similarity).

Cellular Location

Cell junction, adherens junction. Cell membrane. Cytoplasm, cytoskeleton. Cell junction, focal adhesion. Nucleus. Nucleus matrix. Note=Colocalizes with the Ten-1 ICD form of TENM1 in the nucleus (By similarity). Colocalizes with actin stress fibers. Also detected at the plasma membrane

and in neuronal intranuclear inclusions. Colocalized with PXN at focal adhesions during myogenic differentiation.

Tissue Location

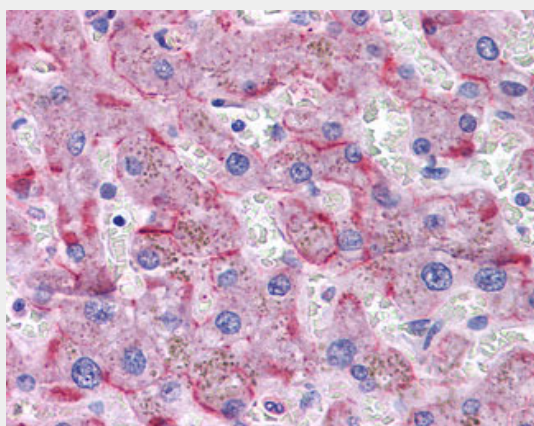
Detected in skeletal muscle (at protein level). Widely expressed with highest levels in heart and skeletal muscle

SORBS1 / Ponsin Antibody (Internal) - Protocols

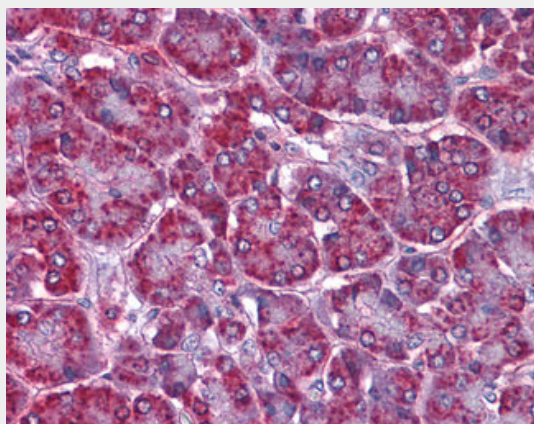
Provided below are standard protocols that you may find useful for product applications.

- [Western Blot](#)
- [Blocking Peptides](#)
- [Dot Blot](#)
- [Immunohistochemistry](#)
- [Immunofluorescence](#)
- [Immunoprecipitation](#)
- [Flow Cytometry](#)
- [Cell Culture](#)

SORBS1 / Ponsin Antibody (Internal) - Images



Anti-SORBS1 antibody IHC of human liver.



Anti-SORBS1 antibody IHC of human pancreas.

SORBS1 / Ponsin Antibody (Internal) - Background

Plays a role in tyrosine phosphorylation of CBL by linking CBL to the insulin receptor. Required for insulin- stimulated glucose transport. Involved in formation of actin stress fibers and focal adhesions (By similarity).

SORBS1 / Ponsin Antibody (Internal) - References

Lin W.-H.,et al.Genomics 74:12-20(2001).

Lebre A.-S.,et al.Hum. Mol. Genet. 10:1201-1213(2001).

Lin W.-H.,et al.Hum. Mol. Genet. 10:1753-1760(2001).

Vandenbroere I.,et al.Biochem. Biophys. Res. Commun. 300:494-500(2003).

Gehrmlich K.,et al.J. Mol. Biol. 369:665-682(2007).